



AGENDA

COMMITTEE OF THE WHOLE WORKSHOP BOARD OF COUNTY COMMISSIONERS

Board Chambers
Suite 100
Ernie Lee Magaha Government Building - First Floor
221 Palafox Place

June 15, 2017
9:00 a.m.

Notice: This meeting is televised live on ECTV and recorded for rebroadcast on the same channel. Refer to your cable provider's channel lineup to find ECTV.

1. Call to Order

(PLEASE TURN YOUR CELL PHONE TO THE SILENCE OR OFF SETTING.)

2. Was the meeting properly advertised?
3. Achieve Escambia
(Jennifer McFarren, Achieve Escambia - 30 min)
 - A. Board Discussion
 - B. Board Direction
4. Triumph Projects
(Chips Kirschenfeld - 60 min)
 - A. Board Discussion
 - B. Board Direction
5. Local Option Sales Tax (LOST) IV
(Amy Lovoy, Joy D. Blackmon, David Forte - 30 min)
 - A. Board Discussion
 - B. Board Direction

6. NOLF Site X Discussion
(Joy D. Blackmon, Cooper Saunders - 30 min)
 - A. Board Discussion
 - B. Board Direction

7. Midtown Commerce Park
(Commissioner Underhill - 5 min)
 - A. Board Discussion
 - B. Board Direction

8. Adjourn

Committee of the Whole

3.

Meeting Date: 06/15/2017

Issue: Achieve Escambia

From: Jack Brown, County Administrator

Information

Recommendation:

Achieve Escambia

(Jennifer McFarren, Achieve Escambia - 30 min)

A. Board Discussion

B. Board Direction

Attachments

Achieve Escambia Overview

Achieve Escambia - Roadmap

Escambia County

Board of County Commissioners

June 15, 2017

The logo features a large, stylized red letter 'A' on the left. To its right, the word 'achieve' is written in a lowercase, grey, sans-serif font. Below 'achieve', the word 'Escambia' is written in a larger, bold, grey, sans-serif font. At the bottom, the phrase 'Cradle to Career' is written in a grey, italicized, sans-serif font.

Achieve
Escambia
Cradle to Career



Vision

Every Generation Achieves Success – Cradle to Career



Mission

*To Align our Community Resources so
Everyone is Empowered to Achieve Success*

Why?



Cradle to Career Outcomes



Kindergarten
Readiness:
• **66.2%**

FLKRS: 2013/2014



3rd Grade Reading:
• **58%**
7th Grade Math:
• **46%**

Percent of students
passing (3 or above on
1-5 scale); 2017 and
2016 FSA, FDOE



High School
Graduation:
• **76.1%**

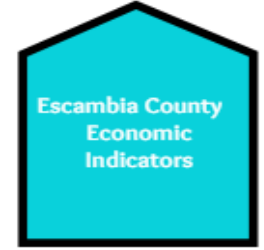
FDOE: 2015-2016



Educational
Attainment:

- 11.2% - less than HS
- 51.4% HS grad, some college
- 12.4% Assoc. Degree
- 25% Bachelors or above

ACS 2015 Estimates



Median
Household
Income:
• **\$45K**

ACS & FRED, 12/16

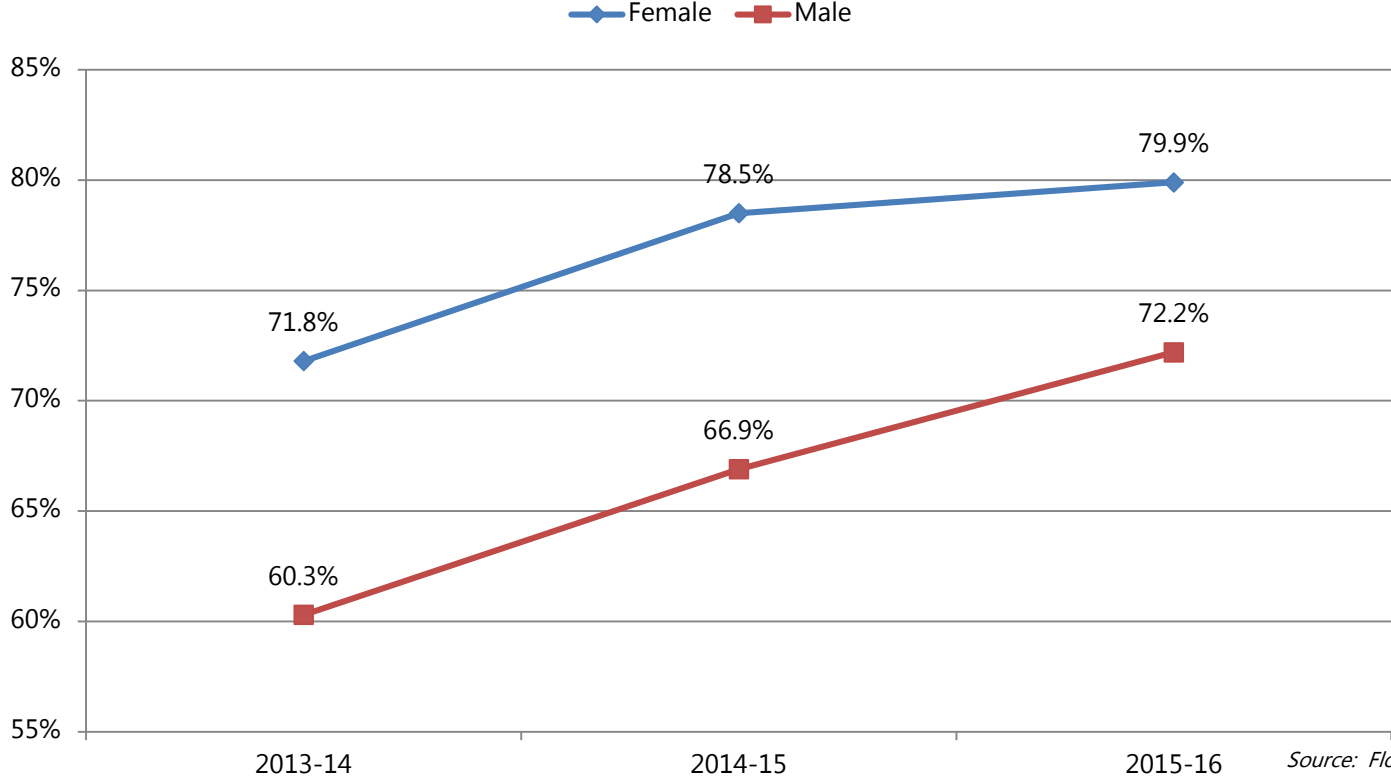


Graduation Rate by High School

<u>High School</u>	<u>2009-10</u>	<u>2013-14</u>	<u>2014-15</u>	<u>2015-16</u>
West Florida	95.2%	95.4%	92.5%	96.1%
Northview	71.5%	70.2%	78.9%	84.2%
J.M. Tate	68.0%	77.2%	80.2%	81.4%
Washington	73.1%	72.2%	83.9%	78.5%
Pensacola	57.4%	61.5%	73.0%	75.7%
Escambia	57.8%	60.1%	68.5%	74.5%
Pine Forest	56.2%	64.5%	67.9%	70.6%
State of Florida	74.5%	76.1%	77.9%	80.7%

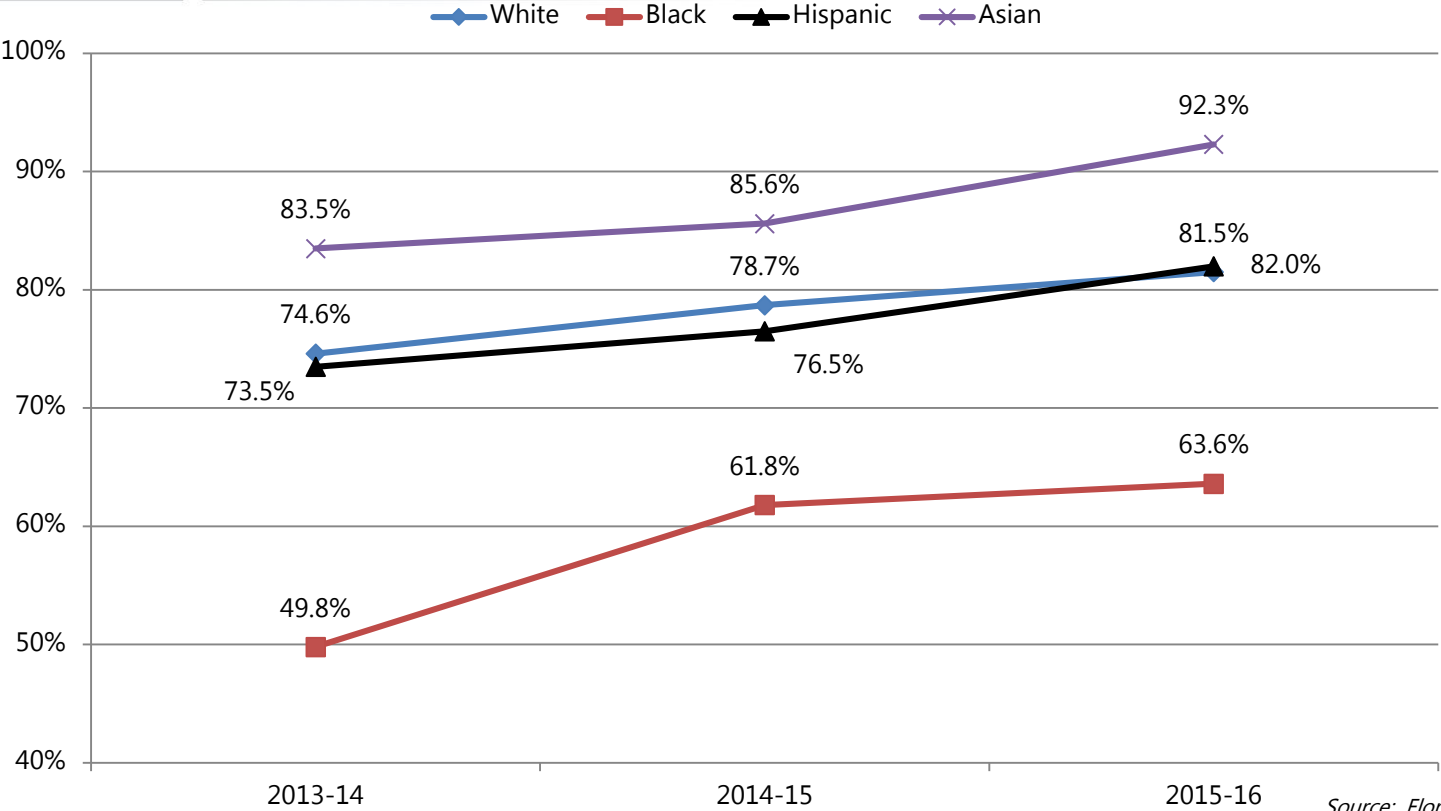
Source: Florida Department of Education

Graduation Rate by Gender



Source: Florida Department of Education

Graduation Rate by Race



Source: Florida Department of Education

Poverty/ALICE (Escambia County)



Escambia County Households (HH) – 117K

❑ Poverty

- < \$25K annual income (family of 4)
- **11%** - 13K (HH)



❑ ALICE

- **A**sset **L**imited, **I**ncome **C**onstrained, **E**mployed
- < \$45K annual income (family of 4)
- **27%** - 31K (HH)

38%

Program Rich & System Poor

CA Weis
Community School

Industry Roundtables

Cram the Van

ECARE

BEST Robotics

Junior Achievement

Career Academies

Financial Literacy

SkillsUSA

TRiO

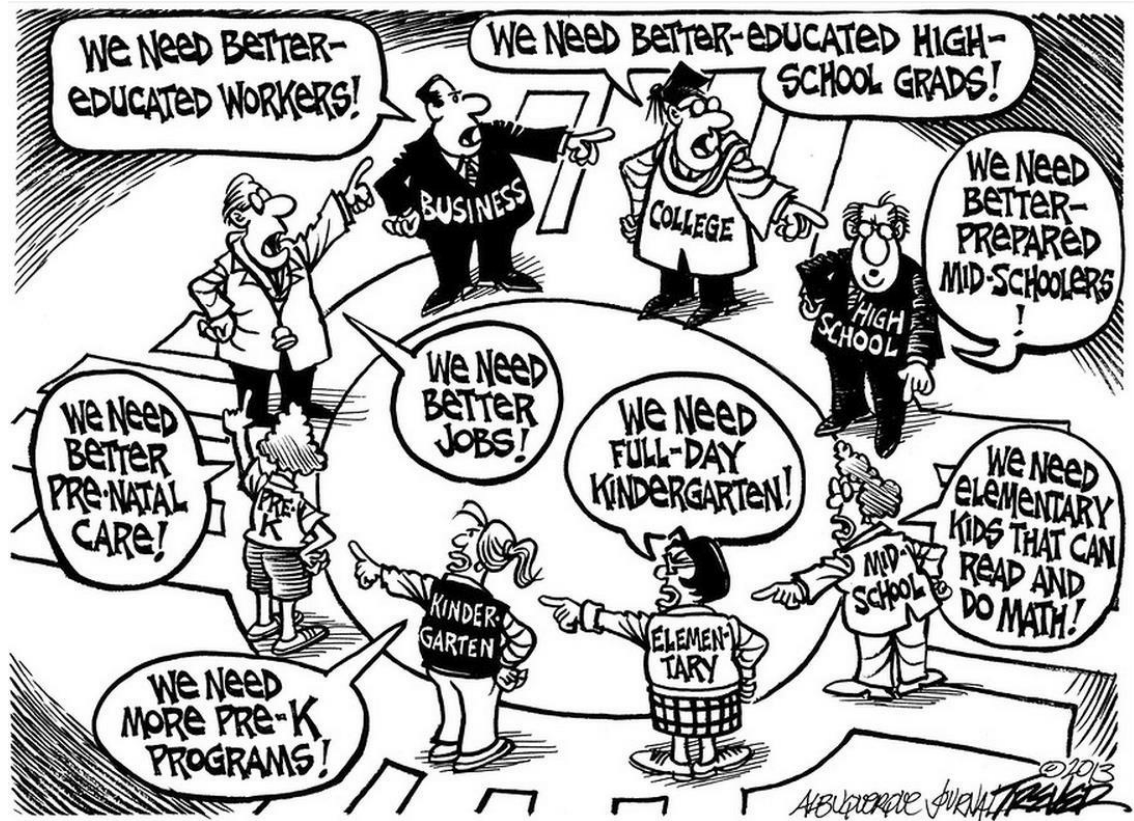
Children's Services
Council

Mentoring
Programs



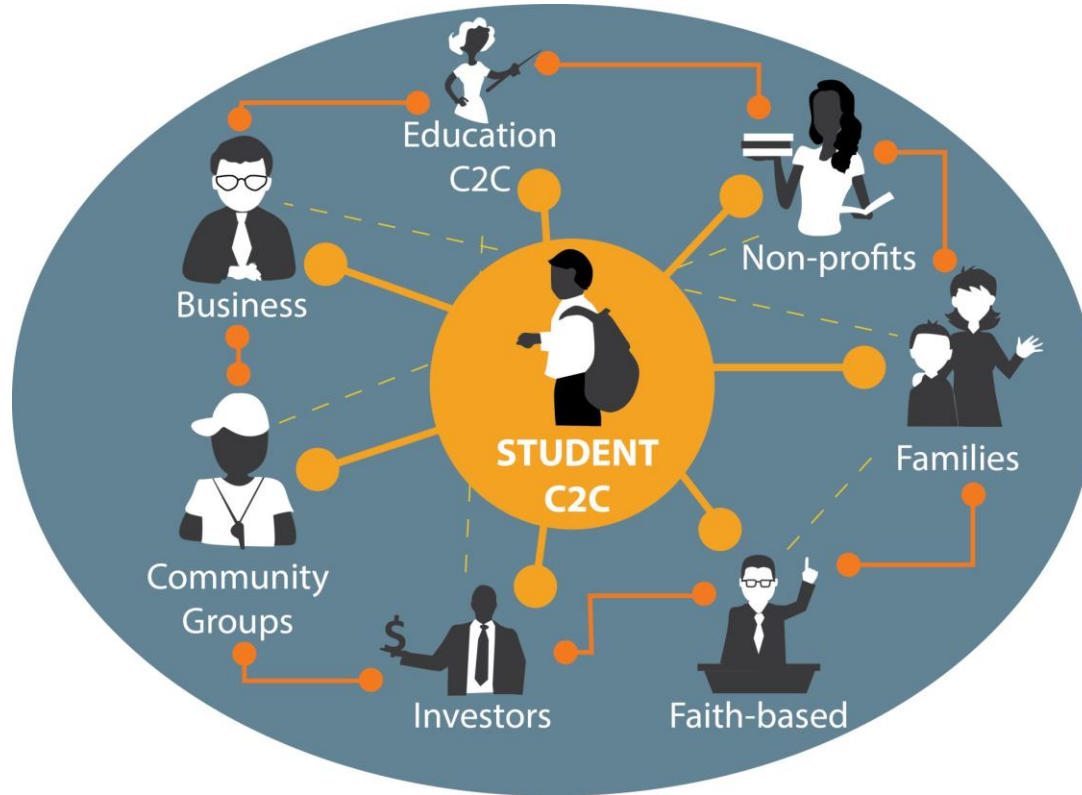
Need Coordinated Vision & Action

Systems Change



“The commitment of a group of actors from different sectors to a common agenda for solving a complex social problem”

Systems Change



Collective Impact National Network



75

COMMUNITY PARTNERSHIPS

building local infrastructure to improve education outcomes for every child



11,000+
ORGANIZATIONS
ENGAGED

**

32 STATES
+ DISTRICT OF
COLUMBIA

Strive Together
Every child. Cradle to career.



How We Got Here

Sept – Dec (2015)

- First Key Stakeholder Meeting
- One-on-one meetings (stakeholder outreach)
- Strategic assistance meetings/planning

January - April (2016)

- Planning Retreat (gathered input from 85+ leaders)
- Community Summit (gathered input from 250+ stakeholders)
- Finalized vision/mission/logo, governance structure, identification and prioritization of key outcome areas

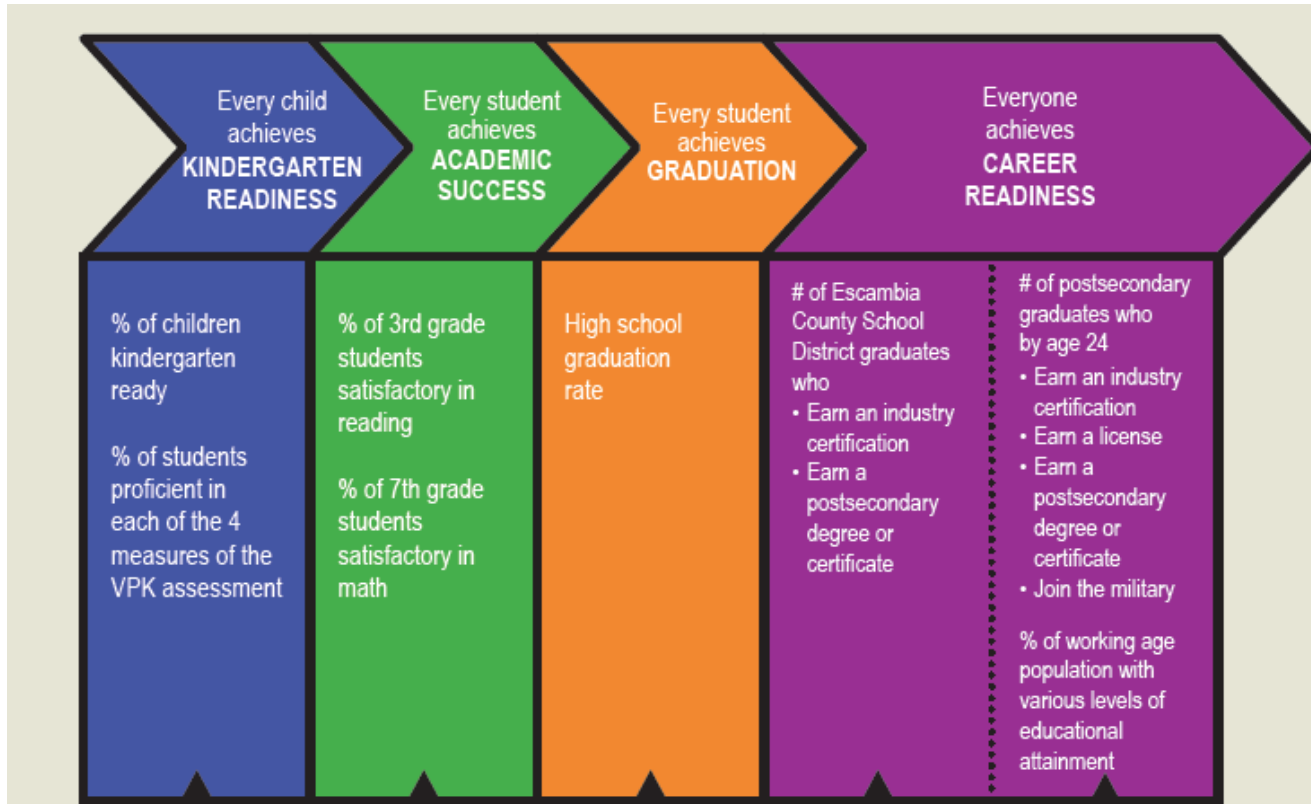
April – September (2016)

- Established Leadership Council
- Expanded Operational Support Team
- United Way became backbone convener
- Began Communications efforts
- Began Fundraising
- Drafted Data Roadmap

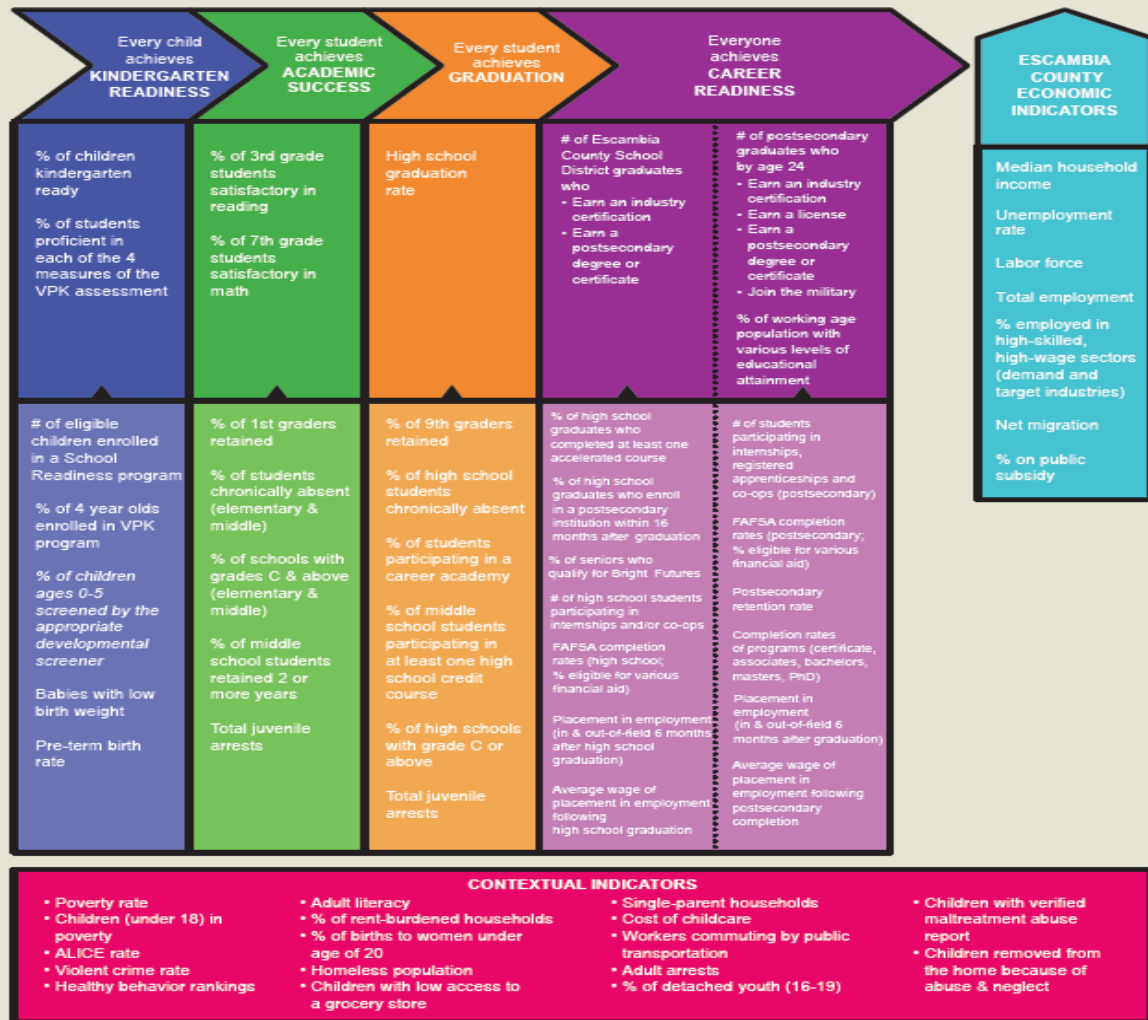
October - December (2016)

- Hired Director
- Hired VISTA
- Establish By-Laws/MoU with United Way
- Launched Kindergarten Readiness CAN
- Became formal Strive Together Network Community (first in Florida!)

Cradle to Career Roadmap



R O A D M A P



Leadership Council

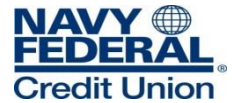
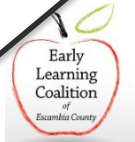


Business

Non-profit

Faith-Based

Education/
Workforce



Government



Escambia County Sheriff's Office



Military



Business Associations



Equity Associations



Collective Action Networks



DATA



KNOWLEDGE



ACTION



Improved outcomes

1. Verify outcomes & indicators
2. Map moving trains
3. Identify partner outcomes
4. Prioritize contributing indicators
- 5. Identify bright spots & opportunities**
- 6. Align resources & action; SCALE!**
7. Continually improve



❑ ITF 1: % of 4-year old's enrolled in VPK

- Co-chaired by Vicki Pugh, ELC and Deborah Nagle, CAPC, Inc.
- Current baseline
 - For the most recent school year (2015-2016), **63.3%** of 4 year old's in Escambia County are enrolled in a voluntary pre-kindergarten program
 - The state comparison for the same time frame is: **78%**

❑ ITF 2: % of children ages 0-5 screened by appropriate developmental screener

- Co-Chaired by MaryAnn Bickerstaff, ARC Gateway and Theresa Chmiel, Healthy Start Coalition
- Current screening is done inconsistently across providers or not at all
- For what is done, various screeners are used and results do not follow child
- ITF will address both what screener(s) to use, for what ages, and how we will implement this

Where We Are Headed - 2017

1st Quarter

- Kindergarten Readiness CAN: Map Moving Trains
- Finalization of Outcomes & Indicators
- Data Coordinator VISTA to begin

2nd Quarter

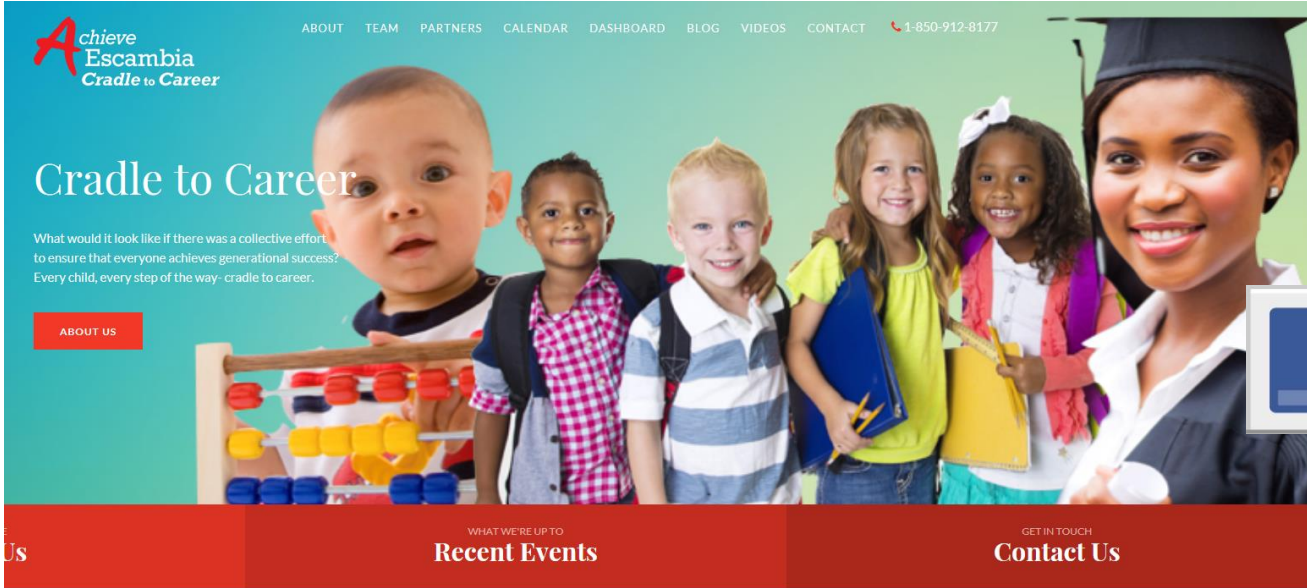
- Kindergarten Readiness CAN: Subcommittees Launch
- Data Sharing Agreements Developed As-Needed
- Website Launch
- Sector Outreach Lunch
- Fill Director Vacancy

3rd Quarter

- **Baseline Report Launch**
- **Online Dashboard Launch**
- CAN Project Implementation
- Input to United Way Investment Process
- StriveTogether Convening

4th Quarter

- **Career Readiness CAN Launch**
- Kindergarten Readiness Projects continue; scale



Navigation: ABOUT TEAM PARTNERS CALENDAR DASHBOARD BLOG VIDEOS CONTACT 1-850-912-8177

Achieve Escambia Cradle to Career

Cradle to Career

What would it look like if there was a collective effort to ensure that everyone achieves generational success? Every child, every step of the way- cradle to career.

[ABOUT US](#)

Us

WHAT WE'RE UP TO
Recent Events

GET IN TOUCH
Contact Us



[Find us on Facebook](#)

REA	TEAM MEMBERS ENGAGED 102	2017 ENGAGEMENT HOURS 411.5	ORGANIZATIONS ENGAGED 52
-----	------------------------------------	---------------------------------------	------------------------------------



Baseline Report

Achieve Escambia Cradle to Career

2017 | Baseline Report
Escambia County, Florida

Every Generation Achieves Success – Cradle to Career

A Cradle to Career Approach

Achieve Escambia is our community's first cradle to career collective impact effort. The partnership shares a vision and strategy for improving cradle to career outcomes through a structured, evidence-based, long-term approach. Being research-based activities, Achieve Escambia will track annual attainment data checkpoints for each of several critical cradle to career stages.

Education flows a continuum, each step building a critical piece of the foundation for success. Achieve Escambia has identified key transition points along the cradle to career spectrum and is working to vertically align resources toward improvements in these key areas. Data reports from cradle to career education providers and other community partners formed a Data Team that created a cradle to career roadmap. This roadmap that focuses Achieve Escambia efforts identifies seven core initiatives to increase program in four customer areas at the community level along this continuum.

The Breadth and Depth of Our Network

Cross-Sector Network

29 Leadership Council
Cross-Sector Network

23 Cross-Sector Support Team
Business Task Team

11 Communications Team
2 Academics Units

24 Case Team
1 Staff

Leadership Council

<p>Bill Stone Escambia County Chairman</p> <p>David Collins Escambia County Deputy Chairman</p> <p>Tom Conolly Escambia County Vice Chairman</p> <p>David Green Escambia County Vice Chairman</p> <p>James Phipps Escambia County Vice Chairman</p> <p>Greg G. Smith Escambia County Vice Chairman</p> <p>Greg Green Escambia County Vice Chairman</p>	<p>Dr. J. Paul Davis Escambia County Vice Chairman</p> <p>David Collins Escambia County Vice Chairman</p> <p>Mark Taylor Escambia County Vice Chairman</p> <p>James Phipps Escambia County Vice Chairman</p> <p>Greg G. Smith Escambia County Vice Chairman</p> <p>Greg Green Escambia County Vice Chairman</p> <p>Dr. Edward Robinson Escambia County Vice Chairman</p> <p>Dr. Mark E. Conroy Escambia County Vice Chairman</p>	<p>City Chairman Dr. Mark E. Conroy Escambia County Vice Chairman</p> <p>Escambia County David Collins Escambia County Vice Chairman</p> <p>Escambia County Mark Taylor Escambia County Vice Chairman</p> <p>Escambia County James Phipps Escambia County Vice Chairman</p> <p>Escambia County Greg G. Smith Escambia County Vice Chairman</p> <p>Escambia County Greg Green Escambia County Vice Chairman</p>
---	--	--

Achieve Escambia | 8

Funding Partners



*“Coming together is a beginning,
staying together is progress, and
working together is **success.**”*

Henry Ford
American Industrialist



- CONTEXTUAL INDICATORS**
- Poverty rate
 - Children (under 18) in poverty
 - ALICE rate
 - Violent crime rate
 - Healthy behavior rankings
 - Adult literacy
 - % of rent-burdened households
 - % of births to women under age of 20
 - Homeless population
 - Children with low access to a grocery store
 - Single-parent households
 - Cost of childcare
 - Workers commuting by public transportation
 - Adult arrests
 - % of detached youth (16-19)
 - Children with verified maltreatment abuse report
 - Children removed from the home because of abuse & neglect

Committee of the Whole

4.

Meeting Date: 06/15/2017

Issue: Triumph Projects

From: Chips Kirschenfeld, Director

Information

Recommendation:

Triumph Projects

(Chips Kirschenfeld - 60 min)

A. Board Discussion

B. Board Direction

Attachments

Triumph Presentation-June 2017 CW

Triumph 7077-June 2017 CW

Triumph 7079-June 2017 CW



Triumph Gulf Coast Update

Committee of the Whole

06/15/17

Overview

- The Gulf Coast Economic Corridor Act was signed into law Friday, June 2, 2017
- Next steps for the Triumph Board
 - Two additional board members must be appointed by the Speaker of the House and Senate President
 - Triumph Board must incorporate
 - A public qualified depository must be selected
 - Selection criteria / proposal submittal process must be developed

Eligible Activities

Activity	Example Project
Infrastructure Projects to Enhance the Economy	Mid-Town Commerce Park
Equipment and Personnel For Local Action Plans	Disaster Response Equipment
Educational Career Development Programs K-20	Project AIMS
Workforce Skill Development	SOAR with RESTORE
Promotion of Tourism and Workforce	Visit Pensacola or Florida West
Ad Valorem Tax Reduction	Reduce Property Tax
Local Match Requirements of s.288.0655 (Rural Infrastructure Fund)	Town of Century Water Quality Improvements

Funding

- 40% of first \$300M will be equally allocated to 8 NWF counties
 - 5% or \$15M spent in Escambia County
- 60% of first \$300M will be competitive
- 32% of remaining \$1.2 B will be equally allocated to 8 NWF counties over 15 years
 - 4% or \$48M spent in Escambia County over 15 years
- 68% of remaining \$1.2B will be competitive
- Triumph Gulf Coast, Inc. will have administrative costs

Requirements of Act

- "Each board of county commissioners shall solicit proposed projects and programs from other elected local governing boards within the county and shall provide Triumph Gulf Coast, Inc., with a list of proposed projects and programs located within its county."
- "The submitted list of proposed projects and programs must include projects and programs submitted by other elected local governing boards and projects and programs recommended by the board of county commissioners"

Requirements cont...

- "Awards may not be used to finance 100 percent of any project or program."
- All projects must be approved by Triumph Gulf Coast, Inc.
- One project can be included on multiple county lists
 - projects that are on multiple lists (regional projects) will be given more weight
- BCC nominated projects will receive a higher prioritization

Other Local Elected Governing Boards in Escambia County

- City of Pensacola
- Town of Century
- Emerald Coast Utilities Authority
- Escambia County School Board
- Soil and Water Conservation Board
- Santa Rosa Island Authority ??

Summary

Next steps for Escambia County:

1. Develop a process to receive and prioritize projects from other local elected governing boards
2. Coordinate with other counties to develop priority regional projects

CHAPTER 2017-63

House Bill No. 7077

An act relating to the Gulf Coast Economic Corridor; amending s. 288.80, F.S.; conforming provisions to changes made by the act; amending s. 288.8012, F.S.; defining and redefining terms; amending s. 288.8013, F.S.; deleting the creation and identification of purposes of the recovery fund; requiring a specified percentage of payments made to the state under a specified settlement of litigation related to the Deepwater Horizon oil spill be immediately transferred from the General Revenue Fund to the Triumph Gulf Coast Trust Fund; providing an appropriation and for the transfer of funds; providing requirements for the allocation of funds; requiring Triumph Gulf Coast, Inc., to make awards for projects or programs within disproportionately affected counties based on specified minimum allocations; requiring each board of county commissioners for such counties to solicit certain projects and programs from certain elected local governing boards; requiring such boards of county commissioners to provide Triumph Gulf Coast, Inc., with a list of projects and programs that are consistent with certain awards and priorities; providing a requirement for the list; providing for the disposition of any remaining funds; limiting administrative costs; requiring interest in the Triumph Gulf Coast, Inc., trust account to be deposited into the Triumph Gulf Coast Trust Fund; revising provisions related to the investment of funds in the trust account; limiting the annual salary of employees or contracted staff of Triumph Gulf Coast, Inc.; revising annual reporting requirements; amending s. 288.8014, F.S.; expanding the membership of the board of directors; specifying conditions for appointing additional board members; deleting references to the recovery fund; deleting obsolete language; revising conflict of interest restrictions imposed on board members of Triumph Gulf Coast, Inc.; removing the requirement that Triumph Gulf Coast, Inc., retain an independent financial advisor and an economic advisor; revising provisions relating to conflict of interest restrictions imposed on retained staff; amending s. 288.8015, F.S.; conforming a provision to changes made by the act; amending s. 288.8016, F.S.; requiring Triumph Gulf Coast, Inc., to publish on its website specified information before making an award; amending s. 288.8017, F.S.; conforming provisions to changes made by the act; revising provisions governing the uses of awards from Triumph Gulf Coast, Inc.; repealing s. 377.43, F.S., relating to the disbursement of funds received for damages caused by the Deepwater Horizon oil spill; specifying that certain conflict of interest restrictions imposed on board members of the Triumph Gulf Coast, Inc., apply to members appointed on or after a specified date; providing a directive to the Division of Law Revision and Information; providing an effective date.

Be It Enacted by the Legislature of the State of Florida:

Section 1. Section 288.80, Florida Statutes, is amended to read:

288.80 Short title.—This section and ss. 288.8011-288.8018 ss. ~~288.8011-288.8017~~ may be cited as the “Gulf Coast Economic Corridor Act.”

Section 2. Section 288.8012, Florida Statutes, is amended to read:

288.8012 Definitions.—As used in ss. 288.8011-288.8018 ss. ~~288.80-288.8017~~, the term:

(1) “Awardee” means a person, organization, or local government granted an award of funds as authorized in s. 288.8017 ~~from the Recovery Fund~~ for a project or program.

(2) “Department” means the Department of Economic Opportunity.

(3)(2) “Disproportionately affected county” means Bay County, Escambia County, Franklin County, Gulf County, Okaloosa County, Santa Rosa County, Walton County, or Wakulla County.

(3) ~~“Earnings” means all the income generated by investments and interest.~~

(4) “Settlement agreement” means the agreement entitled “Settlement Agreement Between the Gulf States and the BP Entities with Respect to Economic and Other Claims Arising from the *Deepwater Horizon* Incident,” which was entered into on October 5, 2015, in the case styled *In re: Oil Spill by the Oil Rig “Deepwater Horizon” in the Gulf of Mexico, on April 20, 2010, MDL 2179* in the United States District Court for the Eastern District of Louisiana ~~“Recovery Fund” means a trust account established by Triumph Gulf Coast, Inc., for the benefit of the disproportionately affected counties.~~

Section 3. Section 288.8013, Florida Statutes, is amended to read:

288.8013 Triumph Gulf Coast, Inc.; ~~Recovery Fund~~; creation; funding; investment.—

(1) ~~There is created within the department of Economic Opportunity a nonprofit corporation, to be known as Triumph Gulf Coast, Inc., which shall be registered, incorporated, organized, and operated in compliance with chapter 617, and which is not a unit or entity of state government. Triumph Gulf Coast, Inc., may receive, hold, invest, and administer the Recovery Fund in support of this act. Triumph Gulf Coast, Inc., is a separate budget entity and is not subject to control, supervision, or direction by the department of Economic Opportunity in any manner, including, but not limited to, personnel, purchasing, transactions involving real or personal property, and budgetary matters.~~

(2) Seventy-five percent of all payments to the state pursuant to the settlement agreement shall be transferred immediately by the Chief Financial Officer from the General Revenue Fund to the Triumph Gulf Coast Trust Fund ~~Triumph Gulf Coast, Inc., must create and administer the Recovery Fund for the benefit of the disproportionately affected counties.~~

The principal of the fund shall derive from 75 percent of all funds recovered by the Attorney General for economic damage to the state resulting from the Deepwater Horizon disaster, after payment of reasonable and necessary attorney fees, costs, and expenses, including such attorney fees, costs, and expenses pursuant to s. 16.0155.

(a) Such funds are appropriated to Triumph Gulf Coast, Inc., and shall be released by the department for deposit into the trust account established by Triumph Gulf Coast, Inc., pursuant to subsection (3) as follows:

1. Seventy-five percent of the moneys received by the state pursuant to the settlement agreement on or before July 1, 2017, shall be immediately released to Triumph Gulf Coast, Inc.

2. Seventy-five percent of the moneys received by the state pursuant to the settlement agreement after July 1, 2017, shall be released to Triumph Gulf Coast, Inc., no later than 30 days after such funds are transferred to the Triumph Gulf Coast Trust Fund.

(b) Triumph Gulf Coast, Inc., shall make awards for projects or programs within the geographic boundaries of each disproportionately affected county based on the following minimum allocations:

1. At least 40 percent of the moneys transferred to Triumph Gulf Coast, Inc., pursuant to subparagraph (a)1., must be allocated equally among the eight disproportionately affected counties based on a minimum allocation of at least 5 percent per county.

2. For each transfer of funds to Triumph Gulf Coast, Inc., pursuant to subparagraph (a)2., at least 32 percent of the moneys must be allocated equally among the eight disproportionately affected counties based on a minimum allocation of at least 4 percent per county.

(c) Each board of county commissioners shall solicit proposed projects and programs from other elected local governing boards within the county and shall provide Triumph Gulf Coast, Inc., with a list of proposed projects and programs located within its county. The submitted list of proposed projects and programs must include projects and programs submitted by other elected local governing boards and projects and programs recommended by the board of county commissioners.

(d) Any remaining funds shall be allocated by Triumph Gulf Coast, Inc., for administrative costs and to make awards pursuant to s. 288.8017. Administrative costs may not exceed 0.75 percent of the funds released to Triumph Gulf Coast, Inc.

(3) The Recovery Fund must be maintained as a long-term and stable source of revenue, which shall decline over a 30-year period in equal amounts each year. Triumph Gulf Coast, Inc., shall establish a trust account at a federally insured financial institution to hold funds received from the Triumph Gulf Coast Trust Fund and make deposits and payments. Interest

earned in the trust account shall be deposited monthly into the Triumph Gulf Coast Trust Fund. Triumph Gulf Coast, Inc., may invest surplus funds in the Local Government Surplus Funds Trust Fund, pursuant to s. 218.407, and interest earned, net of fees, shall be transferred monthly into the Triumph Gulf Coast Trust Fund. Earnings generated by investments and interest of the fund, plus the amount of principal available each year, shall be available to make awards pursuant to this act and pay administrative costs. Earnings shall be accounted for separately from principal funds set forth in subsection (2). Administrative costs may are limited to 2.25 percent of the earnings in a calendar year. Administrative costs include payment of investment fees, travel and per diem expenses of board members, audits, salary or other costs for employed or contracted staff, including required staff under s. 288.8014(9), and other allowable costs. The annual salary for any employee or contracted staff may not exceed \$130,000 and associated benefits may not exceed 35 percent of salary. Any funds remaining in the Recovery Fund after 30 years shall revert to the State Treasury.

~~(4) Triumph Gulf Coast, Inc., shall invest and reinvest the principal of the Recovery Fund in accordance with s. 617.2104, in such a manner not to subject the funds to state or federal taxes, and consistent with an investment policy statement adopted by the corporation.~~

~~(a) The board of directors shall formulate an investment policy governing the investment of the principal of the Recovery Fund. The policy shall pertain to the types, kinds, or nature of investment of any of the funds, and any limitations, conditions or restrictions upon the methods, practices, or procedures for investment, reinvestments, purchases, sales, or exchange transactions, provided such policies shall not conflict with nor be in derogation of any state constitutional provision or law. The policy shall be formulated with the advice of the financial advisor in consultation with the State Board of Administration.~~

~~(b) Triumph Gulf Coast, Inc., must competitively procure one or more money managers, under the advice of the financial advisor in consultation with the State Board of Administration, to invest the principal of the Recovery Fund. The applicant manager or managers may not include representatives from the financial institution housing the trust account for the Recovery Fund. The applicant manager or managers must present a plan to invest the Recovery Fund to maximize earnings while prioritizing the preservation of Recovery Fund principal. Any agreement with a money manager must be reviewed by Triumph Gulf Coast, Inc., for continuance at least every 5 years. Plans should include investment in technology and growth businesses domiciled in, or that will be domiciled in, this state or businesses whose principal address is in this state.~~

~~(c) Costs and fees for investment services shall be deducted from the earnings as administrative costs. Fees for investment services shall be no greater than 150 basis points.~~

~~(d) Annually, Triumph Gulf Coast, Inc., shall cause an audit to be conducted of the investment of the Recovery Fund by the independent certified public accountant retained in s. 288.8014. The expense of such audit shall be paid from earnings for administrative purposes.~~

~~(4)(5) Triumph Gulf Coast, Inc., shall report on June 30 and December 30 of each year to the Governor, the President of the Senate, and the Speaker of the House of Representatives on the financial status of the Recovery Fund and its investments, the established priorities, the project and program selection process, including a list of all submitted projects and programs and reasons for approval or denial, and the status of all approved awards.~~

~~(5)(6) The Auditor General shall conduct an operational audit of the Recovery Fund and Triumph Gulf Coast, Inc., annually. Triumph Gulf Coast, Inc., shall provide to the Auditor General any detail or supplemental data required.~~

Section 4. Subsections (2), (3), (4), (7), and (9) of section 288.8014, Florida Statutes, are amended to read:

288.8014 Triumph Gulf Coast, Inc.; organization; board of directors.—

(2) Triumph Gulf Coast, Inc., shall initially be governed by a five-member ~~5-member~~ board of directors. Each of the Trustees of the State Board of Administration, the President of the Senate, and the Speaker of the House of Representatives shall each appoint one member from the private sector. As of the effective date of this act, the number of board members is increased to seven, with the President of the Senate and the Speaker of the House of Representatives each appointing an additional member from the private sector in one of the four least populous disproportionately affected counties, as identified by the United States Census Bureau in its April 2016 estimates of county populations, to ensure that two such counties are represented on the board. The board of directors shall annually elect a chairperson from among the board's members. The chairperson may be removed by a majority vote of the members. His or her successor shall be elected to serve for the balance of the removed chairperson's term. The chairperson is responsible to ensure records are kept of the proceedings of the board of directors and is the custodian of all books, documents, and papers filed with the board; the minutes of meetings of the board; and the official seal of Triumph Gulf Coast, Inc.

(3) Notwithstanding s. 20.052(4)(c), each initial appointment to the board of directors by the Board of Trustees of the State Board of Administration shall serve for a term that ends 4 years after the Legislature appropriates funds to Triumph Gulf Coast, Inc. ~~the Recovery Fund.~~ To achieve staggered terms among the members of the board, each initial appointment to the board of directors by the President of the Senate and the Speaker of the House of Representatives shall serve for a term that ends 5 years after the Legislature appropriates funds to Triumph Gulf Coast, Inc. ~~the Recovery Fund.~~ Thereafter, each member of the board of directors shall

serve for a term of 4 years. A member is not eligible for reappointment to the board; ~~except~~, however, any member appointed to fill a vacancy for a term of 2 years or less may be reappointed for an additional term of 4 years. ~~The initial appointments to the board must be made by November 15, 2013.~~ Vacancies on the board of directors shall be filled by the officer who originally appointed the member. A vacancy that occurs before the scheduled expiration of the term of the member shall be filled for the remainder of the unexpired term.

(4) The Legislature determines that it is in the public interest for the members of the board of directors to be subject to the requirements of ss. 112.313, 112.3135, and 112.3143, notwithstanding the fact that the board members are not public officers or employees. For purposes of those sections, the board members shall be considered to be public officers or employees. In addition to the postemployment restrictions of s. 112.313(9), a person appointed to the board of directors must agree to refrain from having any direct interest in any contract, franchise, privilege, project, program, or other benefit arising from an award by Triumph Gulf Coast, Inc., during the term of his or her appointment and for 6 2 years after the termination of such appointment. It is a misdemeanor of the first degree, punishable as provided in s. 775.082 or s. 775.083, for a person to accept appointment to the board of directors in violation of this subsection or to accept a direct interest in any contract, franchise, privilege, project, program, or other benefit granted by Triumph Gulf Coast, Inc., to an awardee within 6 2 years after the termination of his or her service on the board. Further, each member of the board of directors who is not otherwise required to file financial disclosure under s. 8, Art. II of the State Constitution or s. 112.3144 shall file disclosure of financial interests under s. 112.3145.

(7) The board of directors shall meet at least quarterly, upon the call of the chairperson or at the request of a majority of the membership, to review ~~the Recovery Fund~~, establish and review priorities for economic recovery, diversification, and enhancement of the ~~in~~ disproportionately affected counties, and determine use of funds ~~the earnings~~ available. A majority of the members of the board of directors constitutes a quorum. Members may not vote by proxy.

(9)(a) Triumph Gulf Coast, Inc., is permitted to hire or contract for all staff necessary to the proper execution of its powers and duties to implement this act. The corporation is required to retain:

1. An independent certified public accountant licensed in this state pursuant to chapter 473 to inspect the records of and to annually audit the expenditure of funds ~~the earnings and available principal~~ disbursed by Triumph Gulf Coast, Inc.

- ~~2. An independent financial advisor to assist Triumph Gulf Coast, Inc., in the development and implementation of a strategic plan consistent with the requirements of this act.~~

~~3.—An economic advisor who will assist in the award process, including the development of priorities, allocation decisions, and the application and process; will assist the board in determining eligibility of award applications and the evaluation and scoring of applications; and will assist in the development of award documentation.~~

~~2.4. A legal advisor with expertise in not-for-profit investing and contracting and who is a member of The Florida Bar to assist with contracting and carrying out the intent of this act.~~

~~(b) All Triumph Gulf Coast, Inc., shall require all employees of the corporation shall to comply with the code of ethics for public employees under part III of chapter 112. Retained staff under paragraph (a) must agree to refrain from having any direct interest in any contract, franchise, privilege, project, program, or other benefit arising from an award of funds by Triumph Gulf Coast, Inc., during the term of his or her appointment and for 6 2 years after the termination of such appointment.~~

~~(c) Retained staff under paragraph (a) shall be available to consult with the board of directors and shall attend meetings of the board of directors. These individuals shall not be permitted to vote on any matter before the board.~~

Section 5. Subsection (2) of section 288.8015, Florida Statutes, is amended to read:

288.8015 Board of directors; powers.—In addition to the powers and duties prescribed in chapter 617 and the articles and bylaws adopted in compliance with that chapter, the board of directors may:

(2) Make expenditures including any necessary administrative expenditure ~~from earnings~~ consistent with its powers.

Under no circumstances may the credit of the State of Florida be pledged on behalf of Triumph Gulf Coast, Inc.

Section 6. Subsection (4) of section 288.8016, Florida Statutes, is amended to read:

288.8016 Triumph Gulf Coast, Inc.; duties.—Triumph Gulf Coast, Inc., shall have the following duties:

(4) Operate in a transparent manner, providing public access to information, notice of meetings, awards, and the status of projects and programs. To this end, Triumph Gulf Coast, Inc., shall maintain a website that provides public access to this information. At least 14 calendar days before approving an award pursuant to s. 288.8017, Triumph Gulf Coast, Inc., shall publish on the website a summary of the project or program and indicate its intent to approve the award.

Section 7. Section 288.8017, Florida Statutes, is amended to read:

288.8017 Awards.—

(1) Triumph Gulf Coast, Inc., shall make awards from available funds earnings and principal derived under s. 288.8013(2) to projects or programs that meet the priorities for economic recovery, diversification, and enhancement of the disproportionately affected counties, ~~notwithstanding s. 377.43~~. Awards may be provided for:

(a) Ad valorem tax rate reduction within disproportionately affected counties;

~~(b) Payment of impact fees adopted pursuant to s. 163.31801 and imposed within disproportionately affected counties;~~

~~(c) Administrative funding for economic development organizations located within the disproportionately affected counties;~~

~~(b)(d)~~ Local match requirements of s. 288.0655 ~~ss. 288.0655, 288.0659, 288.1045, and 288.106~~ for projects in the disproportionately affected counties;

~~(e) Economic development projects in the disproportionately affected counties;~~

~~(c)(f)~~ Public infrastructure projects for construction, expansion, or maintenance which that are shown to enhance economic recovery, diversification, and enhancement of development in the disproportionately affected counties;

~~(d)(g)~~ Grants to local governments in the disproportionately affected counties to establish and maintain equipment and trained personnel for local action plans of response to respond to disasters, such as plans created for the Coastal Impacts Assistance Program;

~~(e)(h)~~ Grants to support programs of excellence that prepare students for future occupations and careers at K-20 institutions that have ~~home~~ campuses in the disproportionately affected counties. Eligible programs include those that increase students' technology skills and knowledge; encourage industry certifications; provide rigorous, alternative pathways for students to meet high school graduation requirements; strengthen career readiness initiatives; fund high-demand programs of emphasis at the bachelor's and master's level designated by the Board of Governors; and, similar to or the same as talent retention programs created by the Chancellor of the State University System and the Commission of Education, encourage students with interest or aptitude for science, technology, engineering, mathematics, and medical disciplines to pursue postsecondary education at a state university or a Florida College System institution within the disproportionately affected counties; ~~and~~

(f) Grants to support programs that provide participants in the disproportionately affected counties with transferrable, sustainable workforce skills that are not confined to a single employer; and

(g)(i) Grants to the tourism entity created under s. 288.1226 for the purpose of advertising and promoting tourism and, Fresh From Florida, and grants to promote workforce and infrastructure, or related content on behalf of one or all of the disproportionately affected counties.

(2) Triumph Gulf Coast, Inc., shall establish an application procedure for awards and a scoring process for the selection of projects and programs that have the potential to generate increased economic activity in the disproportionately affected counties, giving priority to projects and programs that:

(a) Generate maximum estimated economic benefits, based on tools and models not generally employed by economic input-output analyses, including cost-benefit, return-on-investment, or dynamic scoring techniques to determine how the long-term economic growth potential of the disproportionately affected counties may be enhanced by the investment.

(b) Increase household income in the disproportionately affected counties above national average household income.

~~(c) Expand high growth industries or establish new high growth industries in the region.~~

~~1. Industries that are supported must have strong growth potential in the disproportionately affected counties.~~

~~2. An industry's growth potential is defined based on a detailed review of the current industry trends nationally and the necessary supporting asset base for that industry in the disproportionately affected counties region.~~

~~(c)(d) Leverage or further enhance key regional assets, including educational institutions, research facilities, and military bases.~~

~~(d)(e) Partner with local governments to provide funds, infrastructure, land, or other assistance for the project.~~

~~(f) Have investment commitments from private equity or private venture capital funds.~~

~~(g) Provide or encourage seed stage investments in start-up companies.~~

~~(h) Provide advice and technical assistance to companies on restructuring existing management, operations, or production to attract advantageous business opportunities.~~

(e)(i) Benefit the environment, in addition to the economy.

~~(f)(j) Provide outcome measures for programs of excellence support, including terms of intent and metrics.~~

~~(g)~~(k) Partner with K-20 educational institutions or school districts located within the disproportionately affected counties as of January 1, 2017.

(h) Are recommended by the board of county commissioners of the county in which the project or program will be located.

(i)(4) Partner with convention and visitor bureaus, tourist development councils, or chambers of commerce located within the disproportionately affected counties.

(3) Triumph Gulf Coast, Inc., may make awards as applications are received or may establish application periods for selection. Awards may not be used to finance 100 percent of any project or program. Triumph Gulf Coast, Inc., may require a one-to-one private-sector match or higher for an award, if applicable and deemed prudent by the board of directors. An awardee may not receive all of the ~~funds earnings or~~ available ~~principal~~ in any given year. An award may supplement but may not supplant existing funding sources.

(4) A contract executed by Triumph Gulf Coast, Inc., with an awardee must include provisions requiring a performance report on the contracted activities, must account for the proper use of funds provided under the contract, and must include provisions for recovery of awards in the event the award was based upon fraudulent information or the awardee is not meeting the performance requirements of the award. Awardees must regularly report to Triumph Gulf Coast, Inc., the expenditure of funds and the status of the project or program on a schedule determined by the corporation.

Section 8. Section 377.43, Florida Statutes, is repealed.

Section 9. The revision made by this act to s. 288.8014(4), Florida Statutes, applies only to persons who are appointed to serve on the board of directors of Triumph Gulf Coast, Inc., on or after July 1, 2017.

Section 10. The Division of Law Revision and Information is directed to replace the phrase “the effective date of this act” where it occurs in this act with the date this act takes effect.

Section 11. This act shall take effect upon becoming a law.

Approved by the Governor June 2, 2017.

Filed in Office Secretary of State June 2, 2017.

CHAPTER 2017-64

House Bill No. 7079

An act relating to trust funds; creating s. 288.80125, F.S.; creating the Triumph Gulf Coast Trust Fund within the Department of Economic Opportunity; exempting the trust fund from the general revenue service charge; providing for purpose of trust fund and source of funds; providing for future review and termination or re-creation of trust fund; providing a contingent effective date.

Be It Enacted by the Legislature of the State of Florida:

Section 1. Section 288.80125, Florida Statutes, is created to read:

288.80125 Triumph Gulf Coast Trust Fund.—

(1) The Triumph Gulf Coast Trust Fund is created within the department. The trust fund is established as a depository for funds transferred, as set forth in s. 288.8013, from the General Revenue Fund pursuant to the “Settlement Agreement Between the Gulf States and the BP Entities with Respect to Economic and Other Claims Arising from the Deepwater Horizon Incident,” which was entered into on October 5, 2015, in the case styled *In re: Oil Spill by the Oil Rig “Deepwater Horizon” in the Gulf of Mexico, on April 20, 2010*, MDL 2179 in the United States District Court for the Eastern District of Louisiana. The trust fund is exempt from the general revenue service charge provided in s. 215.20.

(2) Funds from the trust fund shall be used for the purposes described in ss. 288.8011-288.8018.

(3) In accordance with s. 19(f)(2), Art. III of the State Constitution, the Triumph Gulf Coast Trust Fund shall, unless terminated sooner, be terminated on July 1, 2021. Before its scheduled termination, the trust fund shall be reviewed as provided in s. 215.3206(1) and (2).

Section 2. This act shall take effect on the same date that HB 7077 or similar legislation takes effect, if such legislation is enacted in the same legislative session or an extension thereof and becomes law, and only if this act is enacted by a three-fifths vote of the membership of each house of the Legislature.

Approved by the Governor June 2, 2017.

Filed in Office Secretary of State June 2, 2017.

Committee of the Whole

5.

Meeting Date: 06/15/2017

Issue: LOST IV

From: Joy D. Blackmon, P.E., Director

Information

Recommendation:

Local Option Sales Tax (LOST) IV

(Amy Lovoy, Joy D. Blackmon, David Forte - 30 min)

A. Board Discussion

B. Board Direction

Attachments

Presentation



Local Option Sales Tax (LOST) IV

COMMITTEE OF THE WHOLE WORKSHOP
BOARD OF COUNTY COMMISSIONERS

Board Chambers
Suite 100
Ernie Lee Magaha Government Building - First Floor
221 Palafox Place

June 15, 2017
9:00 a.m.



LOST IV Planning													
Revenue and Project Projections													
	Estimated	Estimated	Estimated	Estimated	Estimated	Estimated	Estimated	Estimated	Estimated	Estimated	Estimated	Estimated	Estimated
	2018	2019	2020	2021	2022	2023	2024	2025	2026	2027	2028	2029	Total
Revenue	\$30,911,746	\$41,627,818	\$42,044,096	\$42,464,537	\$42,889,182	\$43,318,074	\$43,751,255	\$44,188,767	\$44,630,655	\$45,076,962	\$45,527,731	\$11,495,752	\$477,926,575
LAP Reimbursement				2,246,000									2,246,000
5% Anticipated Revenue	(1,545,587)	(2,081,391)	(2,102,205)	(2,123,227)	(2,144,459)	(2,165,904)	(2,187,563)	(2,209,438)	(2,231,533)	(2,253,848)	(2,276,387)	(574,788)	(23,896,330)
Total Revenue	\$29,366,159	\$39,546,427	\$39,941,891	\$42,587,310	\$40,744,723	\$41,152,170	\$41,563,692	\$41,979,329	\$42,399,122	\$42,823,114	\$43,251,344	\$10,920,964	\$456,276,245
Expenses:													
New Jail/Debt Service	4,200,000	4,200,000	4,200,000	4,200,000	4,200,000	4,200,000	4,200,000	4,200,000	4,200,000	4,200,000	4,200,000	4,200,000	50,400,000
Navy Federal	500,000	500,000	500,000	500,000	500,000	500,000	500,000	500,000	500,000	500,000	500,000	0	5,000,000
Libraries	161,838	150,000	500,000	50,000	0	0	0	0	0	0	0	0	861,838
Bay Center	200,000	200,000	200,000	200,000	200,000	200,000	200,000	200,000	200,000	200,000	200,000	0	2,200,000
Supervisor of Elections	0	1,800,000	0	0	3,566,773	0	0	0	0	0	0	0	5,366,773
Neighborhood & Human Services	175,405	178,276	181,232	184,277	189,014	2,192,293	1,933,334	199,147	202,730	206,420	210,221	0	5,852,349
Parks	1,200,000	2,896,891	2,696,891	2,696,891	2,696,891	2,696,891	2,696,891	2,696,891	2,696,891	2,696,891	3,993,782	0	29,665,801
NESD	725,000	375,000	805,000	325,000	50,000	1,275,000	1,350,000	1,125,000	1,050,000	75,000	750,000	0	7,905,000
Judicial	1,344,014	1,019,209	300,000	1,140,000	200,000	200,000	200,000	100,000	0	0	0	0	4,503,223
Fire/Public Safety	660,000	6,405,524	7,435,000	5,972,891	1,560,000	2,610,000	4,960,000	4,235,000	2,060,000	2,210,000	0	0	38,108,415
Detention	0	0	0	0	0	0	3,000,000	6,518,733	0	0	0	0	9,518,733
Sheriff	0	4,888,167	4,888,167	4,888,167	4,888,167	4,888,167	4,888,167	4,888,167	4,888,167	4,888,167	4,888,167	0	48,881,670
Resurfacing	5,332,597	5,338,562	5,372,091	5,044,026	5,716,491	5,279,679	5,384,864	5,284,185	5,213,089	5,483,277	5,403,475	0	58,852,337
Transportation & Drainage	14,865,988	11,290,416	12,857,798	17,218,784	16,844,706	10,277,814	11,174,930	9,964,606	10,117,502	11,643,094	10,770,922	0	137,026,556
Total Expenses	\$29,364,842	\$39,242,045	\$39,936,179	\$42,420,035	\$40,612,041	\$34,319,844	\$40,488,186	\$39,911,729	\$31,128,378	\$32,102,849	\$30,416,567	\$4,200,000	\$404,142,696
Remaining Unallocated	\$1,317	\$304,381	\$5,712	\$167,275	\$132,682	\$6,832,327	\$1,075,506	\$2,067,600	\$11,270,744	\$10,720,265	\$12,834,777	\$6,720,964	\$52,133,550

Judicial LOST Projects

District	C/D	Project	Description	2018	2019	2020	2021	2022	2023	2024	2025	2026	2027	2028	Total	Notes
2		Facility Bollards	Mobile explosive device barriers throughout the perimeter of the facilities	125,000											125,000	
2		Surveillance Additions & Upgrades	Additional exterior and interior cameras at MCB	70,000											70,000	
2		Surveillance Additions & Upgrades	Upgrade DVRs at the MCB				40,000								40,000	
2		Surveillance Additions & Upgrades	Addition of DVRs and monitors at the JJC	15,000											15,000	
2		Carpet	Replace original carpet throughout numerous Courtrooms and 2nd floor Clerks	224,805			650,000								874,805	
2		Wireless System/Blanchard Building	Install network wireless connections throughout the Blanchard building.	240,000											240,000	
2		Courtroom Video Enhancements & Audio Replacement	Install video presentation capabilities for trials and enhance and replace audio equip in all Courtrooms	100,000		300,000	300,000	200,000	200,000	200,000	100,000				1,400,000	
2		Safety Lighting	Additional exterior lighting		50,000										50,000	
2		Jury and Audience Affixed Seating	Replace original juror and audience seating, which are affixed to the flooring and/or subflooring				150,000								150,000	
2		Public Defender Work Area	Work room conversion to additional offices space and replacement of cooling fan unit		40,000										40,000	
2		Inmate elevator upgrade	Upgrade and replace key operations to manual operations	40,000											40,000	
2		Primary Entrance Renovation	Renovate primary entrance of the MCB to provide a more secure and efficient entry for citizens		400,000										400,000	
2		Court Function operations	\$58,031 - Mental Health Court, \$19,620 - Court Admin, \$206,261 - Court Technology, \$245,275 - State Attorney	529,209	529,209										1,058,418	
		Total		\$1,344,014	\$1,019,209	\$300,000	\$1,140,000	\$200,000	\$200,000	\$200,000	\$100,000	\$0	\$0	\$0	\$4,503,223	

Pensacola Bay Center LOST Projects

District	C/D	Project	Description	2018	2019	2020	2021	2022	2023	2024	2025	2026	2027	2028	Total	Notes
2		Beer Coolers	(2) Coolers, 3rd Floor				20,000								20,000	
2		Sound System Upgrade	2nd Floor East Meeting Rooms								20,000				20,000	
2		Marquee	CPU/Software Upgrade				30,000								30,000	
2		Phone System	(1) Server, (42) Stations, Voicemail		32,000										32,000	
2		AV Upgrade	Screens/Projectors for Meeting Rooms									40,000		20,000	60,000	
2		VFD'S	(5) Units/Year					45,000					45,000	9,000	99,000	
2		Emergency Generator	Feeds Emergency Systems										125,000		125,000	
2		POS System	Concessions Kiosks/Program/License	90,000	25,000	25,000	25,000								165,000	
2		Retractable Seating	(5) Phases, (2) Sections/Year				40,000	40,000	40,000	40,000	40,000				200,000	
2		Kitchen Upgrade	Build Out Hood, Add Equipment								125,000	100,000			225,000	
2		F&B Digital Signage	(14) TV's & Players		13,000										13,000	
2		Website Redesign	Make Site Mobile Compatible			20,000									20,000	
2		Carpet Replacement	(5) Rooms/Year									24,000			24,000	
2		Flooring Resurfacing	Concreate Floors in Various Areas											100,000	100,000	
2		Concession Stands	(6) Stands, Equipment, Counter, ADA						111,000	111,000					222,000	
2		Catering - Hot Boxes	(4) Carter Hoffman Heating Elements		5,000										5,000	
2		Kitchen - Walk In Cooler	(1) Walk In Cooler				8,500								8,500	
2		Kitchen - Deep Fryers	(2) Deep Fryers		11,500										11,500	
2		Trade Show Equipment	Tables, Skirts, Pipes, Meeting Chairs			3,500	2,500	1,500		4,500		1,500		7,000	20,500	
2		F&B Stand Warmers	(7) Stands, (2) Drawers/Stand			16,000	16,000								32,000	
2		Ice Machine Upgrade	(7) Machines			4,500	9,000	4,500		4,500		4,500		9,000	36,000	
2		Box Truck	(1) Box Truck for Catering							40,000					40,000	
2		Rigging Motors	(8) Motors, Steel, Motorl Control	3,000	48,500										51,500	
2		Computers	(8) Computers every (3) Years		15,000			15,000			15,000			15,000	60,000	
2		Spotlights	(2) Super Troup II 3K/Year	42,000	42,000	42,000									126,000	
2		Arena Chairs	(400) Chairs/Year (1,600 Total)			49,000	49,000	49,000	49,000						196,000	
2		Video Surveillance	Phase 1 - (9) Cameras, NVR, Network		8,000										8,000	
2		Exterior Door Upgrade	(6) Sets, 1st Floor	30,000											30,000	
2		Metal Detectors	Phase 2 - (10) Walk Thru	35,000											35,000	
2		Exterior Door Upgrade	(8) Sets, 3rd Floor			40,000									40,000	
2		Perimeter Fence/Gates	Controll access at Firelanes					45,000							45,000	
2		Arena Steps Resurface	Add Traction Coat & Eco Glow									30,000	30,000	40,000	100,000	
		Total		\$200,000	\$200,000	\$200,000	\$200,000	\$200,000	\$200,000	\$200,000	\$200,000	\$200,000	\$200,000	\$200,000	\$2,200,000	

Detention LOST Projects

District	C/D	Project	Description	2018	2019	2020	2021	2022	2023	2024	2025	2026	2027	2028	Total	Notes
3		Main Jail Upgrades	Renovations to the Main Jail						0	3,000,000	6,518,733				9,518,733	
			Total	\$0	\$0	\$0	\$0	\$0	\$0	\$3,000,000	\$6,518,733	\$0	\$0	\$0	\$9,518,733	

Parks & Recreation LOST Projects

District	C/D	Project	Description	2018	2019	2020	2021	2022	2023	2024	2025	2026	2027	2028	Total	Notes
9		Countywide Park Maintenance	Aesthetic Upkeep at LOST parks inclusive of mowing and other repair and replacement aspects. @ \$6.6 M over 11 years	600,000	600,000	600,000	600,000	600,000	600,000	600,000	600,000	600,000	600,000	600,000	6,600,000	
9		County Park Development and Enhancements	Countywide development of new park properties and refurbishment of older but heavily used properties @ \$14,265,801 over 11 years		1,296,891	1,296,891	1,296,891	1,296,891	1,296,891	1,296,891	1,296,891	1,296,891	1,296,891	2,593,782	14,265,801	
9		County Operated Event Facilities Management	To manage, maintain, and provide annual and continual aesthetic and safety upgrades to meet participant and event demands. @ \$6.6 M over 11 years	600,000	600,000	600,000	600,000	600,000	600,000	600,000	600,000	600,000	600,000	600,000	6,600,000	
9		County Park ADA requirements and Special Needs Projects	Continue to stay ADA compliant and to add special playground components countywide for special needs children and adults. @ \$2.2 M over 11 years		400,000	200,000	200,000	200,000	200,000	200,000	200,000	200,000	200,000	200,000	2,200,000	
Total				\$1,200,000	\$2,896,891	\$2,696,891	\$2,696,891	\$2,696,891	\$2,696,891	\$2,696,891	\$2,696,891	\$2,696,891	\$2,696,891	\$3,993,782	\$29,665,801	

Natural Resources LOST Projects

District	C/D	Project	Description	2018	2019	2020	2021	2022	2023	2024	2025	2026	2027	2028	Total	Notes
9	Southwest Greenway	Trail/Boardwalk Rehabilitation		25,000	25,000	25,000	25,000	25,000	25,000	25,000	25,000	25,000	25,000	25,000	275,000	
9	Southwest Greenway	Land Acquisition/Trail Construction West of Fairfield		175,000	50,000	175,000	50,000								450,000	
9	Replace Equipment As Required	Nutrient Analyzer, ICP, Air Quality, Field Meters - Matching Funds		25,000	50,000	25,000	50,000	25,000	50,000	25,000	50,000	25,000	50,000	25,000	400,000	
9	Southwest Greenway	ADA Accessible Trails/Boardwalks - Matching Funds			200,000		200,000		200,000		50,000				650,000	
9	Stream/Floodplain Restoration	11 Mile, Jones, Jackson, Canoe, Carpenter - Match							500,000		1,000,000	1,000,000			2,500,000	
9	Fire Prevention Equipment	Forestry Mower Replacement Equipment				80,000									80,000	
9	Water Quality Improvement	Bayou Grande, Bayou Chico, Carpenter Creek - Matching Funds		500,000		500,000			500,000	1,000,000					2,500,000	
9	Ecotourism	Large Ship Acquisition and Deployment								300,000				700,000	1,000,000	
9	NPDES Permit Monitoring Req	Boat/engine/trailer/electronics Replacement - WQLM			50,000										50,000	
		Total		\$725,000	\$375,000	\$805,000	\$325,000	\$50,000	\$1,275,000	\$1,350,000	\$1,125,000	\$1,050,000	\$75,000	\$750,000	\$7,905,000	

Library LOST Projects

District	C/D	Project	Description	2018	2019	2020	2021	2022	2023	2024	2025	2026	2027	2028	Total	Notes
9		Library Kiosks / Lockers	Kiosks / Vending / Lockers at libraries and community centers	100,000	100,000										200,000	
9		Facilities	Renovations / Improvements to existing facilities (solar panels)			450,000									450,000	
9		Equipment / Technology	Science Technology Engineering Arts and Mathematics Equipment	61,838	50,000	50,000	50,000								211,838	
Total				\$161,838	\$150,000	\$500,000	\$50,000	\$0	\$0	\$0	\$0	\$0	\$0	\$0	\$861,838	

Public Safety/Fire LOST

District	C/D	Project	Description	2018	2019	2020	2021	2022	2023	2024	2025	2026	2027	2028	Total	Notes
9		Admin Buildings							2,000,000						2,000,000	
9		Admin Staff Vehicles											50,000		50,000	
															0	
9		Emergency Communications Radio System Upgrades				2,175,000					2,175,000				4,350,000	
9		Emergency Communications Radio Tower			1,100,000	1,000,000		1,000,000							3,100,000	
															0	
9		EOC Appurtenances/ Building				600,000				300,000					900,000	
9		Emergency Management Staff Vehicles			50,000				50,000						100,000	
															0	
9		EMS Buildings				1,000,000									1,000,000	
9		EMS Ambulances/ Staff Vehicles		500,000	500,000	500,000	500,000	500,000	500,000	500,000	500,000	500,000	500,000	500,000	5,000,000	
															0	
9		Water Safety Buildings					2,912,891								2,912,891	
9		Water Safety Vehicles		60,000	60,000	60,000	60,000	60,000	60,000	60,000	60,000	60,000	60,000	60,000	600,000	
9		Water Safety Life Guard Statnd		100,000	100,000	100,000									300,000	
															0	
9		Fire Department Buildings			3,095,524		1,500,000			3,100,000			1,600,000		9,295,524	
9		Fire Department Traning Facilities				2,000,000									2,000,000	
9		Fire Apparatus/ Staff Vehicles			1,500,000		1,000,000			1,000,000	1,500,000	1,500,000			6,500,000	
		Total		\$ 660,000	\$ 6,405,524	\$ 7,435,000	\$ 5,972,891	\$ 1,560,000	\$ 2,610,000	\$ 4,960,000	\$ 4,235,000	\$ 2,060,000	\$ 2,210,000	\$ -	\$ 38,108,415	

Supervisor of Elections LOST Projects

District	C/D	Project	Description	2018	2019	2020	2021	2022	2023	2024	2025	2026	2027	2028	2029	Total	Notes
9		Precinct Election Management System	Replacement		1,800,000											1,800,000	
9		Voting Tabulation System	Update/Replacement					3,566,773								3,566,773	
		Total		\$0	\$1,800,000	\$0	\$0	\$3,566,773	\$0	\$0	\$0	\$0	\$0	\$0	\$0	\$5,366,773	

Neighborhood and Human Services LOST Projects

District	C/D	Project	Description	2018	2019	2020	2021	2022	2023	2024	2025	2026	2027	2028	Total	Notes
9		Afterschool Programs	Program offers homework assistance, reading and math remediation, project based learning and recreation for school age youth	19,000	19,000	19,000	19,000	19,000	19,000	19,000	19,000	19,000	19,000	19,000	209,000	
9		Youth Summer Camps	Program offers educational, social and recreational enrichment for school age youth during summer months.	50,200	50,200	50,200	50,200	50,200	50,200	50,200	50,200	50,200	50,200	50,200	552,200	
9		Operating Supplies (Both Programs)		10,500	10,500	10,500	10,500	10,500	10,500	10,500	10,500	10,500	10,500	10,500	115,500	
9		Project Coordinator	Salaries & Benefits	56,903	58,610	60,368	62,179	64,044	65,965	67,943	69,981	72,080	74,242	76,469	728,784	
9		Blighted Area Reduction	Acquisition and Demolition of properties located in blighted areas like Erress Blvd.						2,000,000						2,000,000	
9		Dirt Road Paving/CRA's	Dirt Road Paving in CRA areas.							1,737,665					1,737,665	
9		2 PT Community Center Workers		38,802	39,966	41,164	42,398	45,270	46,628	48,026	49,466	50,950	52,478	54,052	509,200	
Total				\$175,405	\$178,276	\$181,232	\$184,277	\$189,014	\$2,192,293	\$1,933,334	\$199,147	\$202,730	\$206,420	\$210,221	\$5,852,349	

Public Works/Drainage LOST Projects

District	C/D	Project	Description	2018	2019	2020	2021	2022	2023	2024	2025	2026	2027	2028	Total	Notes
1		Floridian Ditch Restoration & Godwin Lane Pit Regional Pond	Private ditch erosion in rear of 10 lots along Sarasota Street requires property acquisition, reshaping, and stabilization to prevent erosion and loss of property											700,000	700,000	Loss of residential property in Floridian 2 Subd is eminent. Solution to convert borrow pit on Godwin Lane into a regional stormwater pond, including conveyance will reduce flows and erosion to Floridian Subd, provide water quality, regional pond.
1		Muldoon-Cerney-Velma-Fresno Area Drainage	Bayou Marcus Basin Study -Velma Dr Pond Outfall Branch C (modified by property acquisition and Velma pond expansion). Drainage System Improvements including Velma pond expansion, outfall, and drainage conveyance to Velma Pond to provide better outfall for Muldoon Area Ponds. Project to address extensive home flooding. Project will reduce outfall pipe size and provided more effective outfall for Muldoon-Saufley Field Area ponds.			1,150,000									1,150,000	Need LOST 3 another \$400K budget amendment from Crescent Lake. FDOT's plans are inconsistent with County 25-year design storm requirement; In house design is evaluating options to supplement FDOT project. Requested funding in April 2014; budget amendment approved in 2017. Property for Velma Street pond adjacent to pond is currently for sale for pond expansion; property acquisition has been initiated by appraisal; purchase pending.
1		Muldoon Road Improvements	Improve the drainage system along Muldoon road.								500,000				500,000	Supplement to the "Muldoon-Cerney-Velma-Fresno Area Drainage" to provide outfalls
1		Muldoon Area -Windham Pond Outfall	Construct an outfall for the Windham Pond. This improvement could cause negative effects to other properties , w/o complete outfall system											300,000	300,000	Supplement to the "Muldoon-Cerney-Velma-Fresno Area Drainage" to provide outfalls
1		Muldoon Area -Felton Pond Outfall	Construct an outfall to connect the Felton Pond to the Windham Pond. This improvement could cause negative effects to other properties , w/o complete outfall system.											350,000	350,000	Supplement to the "Muldoon-Cerney-Velma-Fresno Area Drainage" to provide outfalls
1		Midas- Muldoon Area including West side of Green Acres	Miscellaneous drainage improvements in this area to address yard flooding with conveyance improvements for pond outfall connection to the existing Saufley Field pond of which also requires pond outfall system to be installed first.			200,000									200,000	Supplement to the "Muldoon-Cerney-Velma-Fresno Area Drainage" to provide outfalls
1		Youpon Rd Pond Expansion & Pebble Creek Dr Outfall Improvement	Completion of Priority 1 Steps 1-5 from the 11-Mile Creek Basin Study (lower basin), with exception to Step 2 Wilde Lake Blvd bridge and associated April 2014 FEMA repair project. Project includes increasing pond storage capacity and upgrading the pond outflow structure at an existing Youpon Road private pond; improving County pond #552 on Pebble Creek Dr; increasing culvert cross-over capacity on Deerfield Dr to provide adequate attenuation and runoff treatment to reduce street and property flooding.											250,000	250,000	

Public Works/Drainage LOST Projects

District	C/D	Project	Description	2018	2019	2020	2021	2022	2023	2024	2025	2026	2027	2028	Total	Notes
1		Bellview Avenue Branch E Drainage Chestnut-Hogan Pit expansion	Piped Bellview Ave system between Rosewood Estates and Hogan Road, includes expansion of the Chestnut-Hogan Pit, to address street, yard, and home flooding.				200,000	300,000	1,000,000						1,500,000	
1		Godwin Lane/Chicago Ave area of Lone Pines, Southern Pines, and Bellview Pines Subdivision	Supplement the County Southern Pines Pond ID # 94 and Bellview Pines Pond ID # 528 off Chicago Ave, with an additional stormwater pond located in Gulf Power Easement. Both County ponds have poorly defined positive outfall and property owners at 2810 Godwin Lane and surrounding homes reporting home flooding in severe storms.										100,000		100,000	Project requires acquisition of un-useable property within Gulf Power easement for a pond site with improved conveyance system to the pond. Acquisition costs should be low. Pond and conveyance depends upon drainage area evaluation.
1		Helms Rd -Beulah School Road-Hidden Valley Area	Increase capacity of drainage structures crossing Helms Road to prevent roadway overtopping and decrease upstream flood stages in the area between Beulah School Road and Hidden Valley. Drainage complaints at 6637 Helms Road of driveway flooding.										207,500		207,500	Drainage complaint 2/15/19
1		Klondike Road North of Mobile Highway	Increase capacity of structure under Klondike Road to prevent roadway overtopping, and flooding at 7425 and 7471 Klondike Road										350,000		350,000	Drainage 2/7/17 through D1 office
1		Willowside Drive and Westlake Subdivision Drainage	Address home, yard, and street flooding on 72nd Avenue and Willowside Drive through the Westlake Subdivision: Reference Warrington Basin Study-St James Branch C. May require modifications.											350,000	350,000	
1		Riola Place - Bridge Creek/Heron Bayou Study Branch E	Lower pipe inverts and increase the capacity of the culvert under Riola Place to decrease out-of-bank channel flooding.											100,000	100,000	512 Riola (Jim Thomas) flooded after Ivan, but not April 2014
1		Helms Rd & Woods Lane	Construct a new culvert under Woods Lane and reconstruct the ditch feeding to the existing culvert. Perdido River South Basin										70,000		70,000	
1		Saddlebrook S/D and Wymart Road (Belguim Circle)	Drainage system on Belgium Circle is slightly under capacity causing yard and street flooding, no home flooding reported. Wymart downgradient overtops. Need pond on school board property and culvert under Wymart Road									350,000	250,000		600,000	Septic tank problems has been reported due to saturated solid types. Ditch capacity concerns on Belgium Circle causing yard flooding.

Public Works/Drainage LOST Projects

District	C/D	Project	Description	2018	2019	2020	2021	2022	2023	2024	2025	2026	2027	2028	Total	Notes
2		Beach Haven Area Drainage and Sewer Northeast Phase 3	Roadway, drainage, and sewer improvements includes stormwater treatment facilities, wastewater collection system, and septic tank abatement. Project is bounded by Colbert Ave, Fairfield drive E-W; Gulf Beach Highway on the south; and Jones Creek and Old Hickory Drive on the north. Design is substantially complete with pond addition for a total of 3 ponds and stormceptor treatment system to satisfy Gulf Coast Ecosystem Restoration Council grant monitoring requirements.		3,500,000										3,500,000	Gulf Cost Ecosystem Restoration Council grant \$5,967,000 pending approval. Current design estimate at \$7,823,000 with additional water quality funding for a total of \$9M expected to satisfy grant requirements.
2		Beach Haven Area Drainage and Sewer South (Wetland Restoration and Environmental grants for consideration; phased project)	Estimated \$10.9M acquisition, design and construction roadway, drainage, and sewer improvements includes stormwater treatment facilities, wastewater collection system, and septic tank abatement. Improvements to address inadequate drainage system, water quality, wetland restoration/conservation, roadway and residential flooding, failed roadway. Project is bounded by Mills Ave on the East; Atlanta Ave on the West; Gulf Beach Highway on the north; and Bayou Grande on the south.						350,000						350,000	Need total of \$10.9M for project; will require ECUA sewer funds or grant funds. ECUA has \$3M funded in 2019 on their 5 Year project planning scheduled. Potential grant opportunities due to the type of project. Project has been submitted to TNC for RESTORE funds. Grant funding eligibility is likely; funding is for match funds, design, and acquisition costs.
2		North 61st Property Purchase and flood plain restoration	Properties (10) next to Bayou Marcus Creek are located within the flood hazard zone AE, in 100-year flood plain per FIRM maps; purchase a minimum of 6 properties located the flood zone located along the creek for the purposes of flood plain restoration, and stream restoration	150,000											150,000	Likely eligible for HMGP funding; funding for design/study application only. Application following next disaster declaration and NOFA necessary. Costs shown are only funding match.
2		Bayou Grande Basin K1- Gulf Beach to Winthrop SS	Replace the outfall trunk line from Gulf Beach Hwy through Winthrop Ave. to prevent roadway flooding.	175,000											175,000	ECUA has \$1.7 M in 2017 and \$1.8M funded in 2019 on their 5 Year project planning scheduled. RESTORE, FDEP portal, and Natural Resources Damage Assessment (NRDA) submittals
2		Navy Point Drainage and Sanitary Sewer	Construct treatment swales within Navy Point to treat stormwater as it flows to the discharge point per Bayou Grande Basin Study, as well as drainage upgrades to the area. Possible Joint Drainage and Sewer project in Navy Point Area	345,000											345,000	ECUA has \$1.7 M in 2017 and \$1.8M funded in 2019 on their 5 Year project planning scheduled. RESTORE, FDEP portal, and Natural Resources Damage Assessment (NRDA) submittals
2		Myrtle Grove System A (remaining portion)	Complete System A to including acquisition for easement and pond site in area of 72nd & 73rd Ave, South of Jackson, & North of Harvey St										300,000		300,000	

Public Works/Drainage LOST Projects

District	C/D	Project	Description	2018	2019	2020	2021	2022	2023	2024	2025	2026	2027	2028	Total	Notes
2		BASIN STUDY: Garson Swamp and Southwest Side Basin Study & Implementation of Improvements	Master Drainage Plan Study to address flooding in the Innerarity Point Causeway, Treasure Hills Area, Perdido Estates, Perdido Bay Country Club Estates, Chandelle, Gulf Beach Hwy @Seaglades South, etc. Indigo Lane @Landfall Subdivision (to name a few)								392,500			450,000	842,500	Added to list in May 2015. Upon completion of the Master Drainage Plan Study; funding will be needed for plan implementation. Aging system of Gulf Beach Hwy requires rehabilitation and enhancements, including multiple area subdivisions need a plan implementation to address home flooding. Study must be completed first.
2		Old Corry Field Area Drainage	Warrington Basin Study Branch H includes adding a stormsystem along Old Corry Field Road, extending from Border Street down to Jackson Creek, as needed to address business flooding.					500,000							500,000	A portion of the trunk line up is to be installed by Sidewalk project in design 2017 through a LAP project. However, funding likely needs to be moved forward since FDOT will not fund primary drainage
2		Pinehurst-Twin Oaks gully restoration	Stabilize & reshape the entire Gully (~ 2000 LF) within the Redwood Cir, Catalina Cir, and LeHigh Cir area						100,000			2,000,000			2,100,000	Significant Erosion gully where rear yard properties are eroding into the gully
2		Lake Charlene Phase 2 (Bridle trail) Area Drainage (including future phases not covered by grant)	Drainage System Improvements referenced in 2007 Warrington Master Plan, and 2015 Lake Charlene Warrington Study, and as updated for HMGP.					1,700,000							1,700,000	HMGP funding covered 100% of Phase 1 Lake Charlene by leveraging NFWF funding from Beach Haven. This project provides protection for a 100-year event for Lake Charlene Bridle Trail by providing a secondary outfall to Turtle Swamp; requires conservation easement amendment, and coordination with EPA.
2		Sunset/Patton/Elite/Gulf Beach Hwy Drainage Outfall (ECUA: Navy Point Phase 4, South of GBH Sunset Ave to Bayou Grande)	Bayou Grande Basin Study K1 & K2 drainage plan recommendations; and drainage portions of ECUA Navy Point Phase 4; project for cost sharing with ECUA. Realign the drainage outfall line beginning at Gulf Beach Hwy and Elite Drive to flow down South Sunset St; other priorities for water quality improvements ; abandon and reroute drainage from Elite to Sunset system. Additional drainage enhancements to the property at 540 Gulf Beach Hwy County owned property at outfall for large drainage area.		350,000										350,000	Budget Costs Represent only drainage. ECUA Utility Coordination/Joint Drainage Projects
2		Perdido Bay Country Club Estates Unit 8	Drainage (\$300K) and resurfacing (\$500K) projects to address flooding and groundwater problems										170,000		170,000	Reported flooding and roadway failures. Drainage (\$300K) and resurfacing (\$500K) projects to address flooding and groundwater problems. Budget amount covers design and acquisition
2		Bayou Grande Villas	Drainage improvements rehab from Gulf Beach Hwy to the Bayou (includes piping from Gulf Beach through San Juan Calzada, San Migel Calzada, to Bayou				200,000								200,000	ECUA has \$1.5M funded in 2020 on their 5 Year project planning scheduled
2		Myrtle Grove System E (McNair Ln and 57th)	Improvements on 72nd and 73rd Ave, South of Jackson and North of Harvey St. Pond site has already been purchased.	100,000											100,000	Added to list in May 2015; County already purchased pond site, but never built the pond

Public Works/Drainage LOST Projects

District	C/D	Project	Description	2018	2019	2020	2021	2022	2023	2024	2025	2026	2027	2028	Total	Notes
2		Citrus Street Area Drainage	Drainage System Improvements to address significant street and yard flooding, and includes a pond site within existing County-owned property located on Jackson Street.					200,000	100,000	300,000					600,000	
3		Beverly Parkway Basin Zone H- Loretta Street, between Kelly Ave and North "P" Street	Acquisition & construction of new ponds to expand the collection system in the Loretta Street area.								1,000,000				1,000,000	
3		BASIN STUDY: Catholic High Basin Study Updates	Master Drainage Plan Study requires update to current Basin Study guidelines compatible with GIS formats and with improved solutions considering regional ponds (costs effective) vs. costly direct pipe discharge (constructability issue)		250,000										250,000	Moreno and R Street drainage solution to prevent home flooding is one area of significant concern; proposed plan in current basin study is not cost effective.
3		Dorothy & Lydia Avenue Area Drainage	Improve existing drainage system causing lot flooding- area drains to private Rolling Hills borrow pit, that causes sediment problems to Crescent Lake	40,000											40,000	
3		BASIN STUDY: Oakfield Area Drainage (Palafox Street @ Oakfield/Kenmore/Pacific/Majors/Pinestead) DUE DILIGENT STUDY	The Beverly Parkway Basin has identified multiple pond sites for basin area. A Due Diligent report is needed to purchase needed pond site properties.	50,000									200,000		250,000	\$8M proposed in Beverly Parkway basin study to fund project. Project needs to start with a due diligence Study for property acquisition for 2 pond sites prior to design implementation. Project coordination and planning to match CRA funding for Oakfield Redevelopment District
3		Palafox Street @ Oakfield/Kenmore/Pacific/Majors/Pinestead	Drainage Project in the area of Palafox Street @ Oakfield /Kenmore /Pacific /Majors /Pinestead estimated at \$8M depending on final design, phasing, & pond acquisition, Beverly Parkway Basin Study Improvements Branches O, N, & P, (in order of priority), with Q in parallel with other branches. Branch O- New stormwater pond located south of Majors Road with conveyance.							3,000,000					3,000,000	Need a total of \$9.2M to fund entire project as presented in Master Drainage Plan.
3		Jackson Street -Bayou Chico-Frontera Drainage Area	Multiple areas of Jackson Street need drainage conveyance, and stormwater pond, specifically in the basin areas Bayou Chico to address street, yard, and property flooding, including Fronterria Circle, Green St, Idlewood Dr, Ross St, Padget Ct(private), and Grandview St	350,000											350,000	County owned parcels on Fronterria Circle or Godwin Street could be utilized for stormwater pond sites. In-house design
3		West Highlands at Green and Lloyd	Address property flooding in an area North of Mobile Hwy West of Dominguez Street, Green St, and Lloyd Street up to Mallory Street. Home flooding severity resulted in County purchase of 2 parcels residential property parcels. Pond(s) acquisition, design, and construction necessary to address flooding, due to archaic CMP drainage system under capacity				150,000	400,000							550,000	Project is located in Brownsville CRA district and identified as a ECUA sanitary sewer expansion area. Existing under capacity system currently outfalls to Cervantes (FDOT) system and will require pond attenuation permitting.

Public Works/Drainage LOST Projects

District	C/D	Project	Description	2018	2019	2020	2021	2022	2023	2024	2025	2026	2027	2028	Total	Notes
3		East Brownsville Sanitary Sewer with West Highlands Drainage and portion of Catholic High Zone A South End	Sanitary sewer proposed by ECUA in two separate drainage areas, as found in the Warrington and Catholic High Basins.		440,000	1,000,000									1,440,000	Project added in September 2016 through coordination with ECUA and CRA; located in Brownsville redevelopment District with eligible for federal funds. Joint funding with ECUA expected.
3		Delano Area North Kelly Avenue Basin	Drainage System Conveyance Improvements for area between Pace Blvd, Massachusetts Av, W ⁿ St., and Truman to improve conveyance to Kelly Avenue pond, as well as provide for an improved outfall system.											400,000	400,000	
3		Ortega Subdivision Pond improvements	Existing subdivision pond does not have adequate positive outfall and floods several residential properties and roadway during heavy rainfall events	200,000											200,000	
3		Ranch Lands- Sagebrush Trail Flood Plain Restoration	Reduce repetitive loss flooding along Sagebrush Trail ~ 13 homes (Ranch Lands Subdivision) and additionally flooding in the 8800 block of Cove Avenue. Requires pond site acquisition, and improved drainage conveyance capacity of FDOT channel capacity, and on Cove Avenue to address reported.										500,000		500,000	Referenced in Eight Mile Creek Basin Study Priority 3; Possible future HMGP eligible project.
3		Massachusetts Ave Pit/Pond - Erress Blvd D/E Outfall	Expand ditch into adjacent 10' wide aquired property. Then obtain easement access to the South west or system West on Massachusetts Ave.	100,000					350,000						450,000	To route drainage down Masscusetts to the West; it is estimated \$450 K. Possible LOST 3 reallocation
3		St Johns North of PCC (Beverly Parkway Branch F)	Beverly Parkway Basin Study Zone F: Purchase property for pond site and connect to 48" pipe across Pensacola Christian Academy (PCA). Add conveyance from system to the North including upgrades to system from Oleander drive to Cummings Street. This will address flooding problems at Cummings Street and St. John's before tying into the PCA Campus. Additionally this system will address business/residential flooding in the area, as well as reduce capacity and flooding problems at the Brent-Hwy 29 intersection.											450,000	450,000	Added to the lists in May 2015 ; Property floods on North Side of St Johns; perfect pond site for area. Project will reduce impacts to system at Brent Lane- Hwy 29 intersection at the Brent Shopping Center Complex
4		Atwood CRA-Frinchez Heights (Sabra, Erwin, Whitmire, Ernistene Area)	Proposed drainage capacity improvements in the Frinchez Heights area including Sabra Dr, Erwin Dr, Whitmire Dr, Ernistene Rd (North of Olive Rd) which will likely require a ditch conversion into a pond site. Multiple residential properties flooded in April 2014. Project will provide pond site for Olive Road sidewalks, and can be incorporated with ECUA's sanitary sewer project Atwood-Whitmire as part of CRA funding initiative		700,000										700,000	Added to list in May 2015. Potential joint project with ECUA's Atwood Whitmire. Located within the Atwood CRA District eligible for TIF funds. Note: Identify conceptual plan through Carpenters Creek North end Master Drainage Plan, along Olive Road

Public Works/Drainage LOST Projects

District	C/D	Project	Description	2018	2019	2020	2021	2022	2023	2024	2025	2026	2027	2028	Total	Notes
4		Carpenters Creek Upper Olive Area Basin Implementation (Olive Road West Sidewalk & Drainage)	Proposed drainage capacity improvements requiring ditch conversion into a pond sites. Project will provide pond sites for Olive Road sidewalks. Expect 2 additional pond sites, 1 private lake acquisition/rehabilitation, and a wetland restoration project to improve Carpenters Creek water body.			650,000	200,000								850,000	Added to list in May 2015. Project funding supports sidewalks West of Davis. Note: Identify conceptual plan through Carpenters Creek North end Master Drainage Plan, along Olive Road
4		Stillbridge Subdivision (Stillbridge Lane Drainage, Pond, and Resurfacing)	Relieve roadway, home, and yard flooding. Address roadway based failure by improving the drainage system in the neighborhood and routing water to the County pond to the North of the subdivision of University Parkway, provide pond rehab and access to ponds, including wetland restoration. Design/Acquisition: \$158K, Resurfacing \$400K, Drainage:			150,000									150,000	Design initiated through LOST3; Home, and yard flooding, roadway base failure
4		BASIN STUDY: Santa Roza Villas Subdivision and Villas on the Gulf Area Drainage	2011 Master Drainage Assessment of Pensacola Beach, does not specifically address drainage concepts for Villas on the Gulf waterbody. Assessment does identify two Pensacola Beach Drainage Problems 6.13 (Calle Juela at Via De Luna) and 6.16 (Calle Travie)						100,000					300,000	400,000	Project added in November 2016, due to historical complaints in the area. Small scale basin study, including design, plan, and construction implementation. Due to availability of property the private pond will need to be evaluated for County acceptance and upgrade.
4		Ferry Pass Drainage Zone 6	Drainage System Improvements on Boyd Ave and adjoining Beagles St, Gerker St, De Loach St, and Raines St; dependent upon Olive Rd drainage system upgrades			50,000	900,000								950,000	Funding from LOST 3 was rebudget to Olive Road Project. Olive Road Phase 2 drainage requires installation for this project to proceed.
4		Westview Lane & Lewis St Area Drainage	Drainage improvements to address stormwater and groundwater from Lewis Street and the Moose Lodge 557 impacting lots 61-67 along Westview Lane								200,000				200,000	Added to list in May 2015; Priority project for Miscellaneous Drainage Project Funding Consideration
5		Woodrun Subdivision Stream Restoration & Drainage	Scenic Hills Priority 8: Correct road overtopping and provide for stream restoration, including 2- 42" RCP, 2-6'X8' box culverts, and 2-9' X 8' box culverts. Expect to apply for grant funds for stream restoration on County owned wetland parcel (park area), to address home, yard, & street flooding, roadway base failure, stream erosion and stream blockage.		200,000		500,000								700,000	Scenic Hills Master Plan Priority 8. Expect to apply for grant funds for stream restoration, conservation grant, or water quality improvement, etc. Need additional \$1.5 M in grant funds to fund construction
5		Willowbrook Lake Dam	Restore dam and overflow structure at Willowbrook dam East of Chemstrand Road to provide Water Quality					650,000							650,000	Funding shortage to reconstruct pond dam and overflow structure

Public Works/Drainage LOST Projects

District	C/D	Project	Description	2018	2019	2020	2021	2022	2023	2024	2025	2026	2027	2028	Total	Notes
5		Woodlands -UWF Scenic Hills--St Luke's Church Neighborhood Partnership Stream Restoration & Flood Protection Project	Water quality, wetland restoration, and flood control. Enhance existing public drainage system, combined w/existing private systems with easement donations.								300,000	1,000,000			1,300,000	Ranked #25 on the COUNTY RESTORE funding lists. Estimated \$5M project with the expectation of \$1.3 M would be needed for match. Project partners include UWF Scenic Hills Country Club, Sunnehanna Apartments, Battery Source, Inc., Woodland Condominiums, Woodlands HOA, Saint Luke's Methodist Church, and FDOT.
5		Bristol Park- Ashbury Hills Area of 11-Mile Creek Stream Restoration and HMGP acquisition/demolition	Flood Plain Management, Wetland Restoration, and Stream Restoration project to utilize the grant purchased properties within Special Flood Hazard Zone, and repetitive flooded properties. Additional acquisition/demolition properties requested, and under consideration by FDEM-FEMA; providing flood protection for 120+ flooded properties.	280,000							1,400,000				1,680,000	Federal HMGP funds awarded for \$6,189,379 for property acquisition/demolition. Additional grant funding has been requested to move this large scale project forward for additional property acquisition/demolition, as necessary to lower the flood stage in the creek and reduce the flood hazard to homes. Project has been submitted for RESTORE funding and Ranked #1 by RAC; awaiting BCC approval. LOST funds are planned to be utilized for some additional property acquisition, design, and grant match funding. Project completion is expected to require additional grants to provide a complete realization of the 11-Mile Creek Basin Study recommendations.
5		Pin Oak Lane Drainage (Phase 1) HMGP, and Flood Plain Restoration Project (Phase 2)	HMGP Phase 1: Construct a new roadway connection to Quintette Road at North end, including acquisition/demolition of 1000 Pin Oak (home floods) as part of HMGP. Phase 2: Future flood plain expansion parcel at NE corner of Hwy 29 at South end.										200,000		200,000	Project grant awarded for design (\$78,406) in March 2017, pending BCC approval. Stream Restoration and flood plain management portion of project will not qualify for HMGP at this time; separate funding sources will need to be considered. Use matching funds from LOST 4.
5		Crocket, Crestfield, and Blue Pit project	Project under design to address capacity issues on West Roberts Road, yard flooding on Pine Forest, and home flooding on Crestfield.	420,000											420,000	Construction funding for Crocket, Crestfield, and Blue Pit project currently in design. Also benefits 11-Mile Creek regional pond plan, by expanding Blue Pit
5		West Roberts Drainage and Regional Pond.	Regional pond and conveyance system on West Roberts Road utilizing County Pit (acquired from FDOT). This is one of 11 Mile Creek Basin Regional Pond Plan to reduce flood stage.					200,000							200,000	This is an extension of Crocket, Crestfield, and Blue Pit project currently in design.
5		Northcreek Subdivision Culvert and Shoulder Work Area	NA-Northcreek Drive and Circle drainage system is minimal and requires upgrades to repair roadway erosion/failure, culvert end treatment, and conveyance improvements to prevent property flooding and erosion to residential lots.									200,000			200,000	Failing culvert crossing, flooded yards and erosion reported, and roadway integrity compromised

Public Works/Drainage LOST Projects

District	C/D	Project	Description	2018	2019	2020	2021	2022	2023	2024	2025	2026	2027	2028	Total	Notes
5		Chandler Street Drainage	Improve existing drainage system to prevent street, yards, and multiple home/business flooding. FDOT is to install drainage trunk line to the expanded Holsberry Pond by 2022, and is designed to accommodate drainage from the project area of Chandler Road between 9 & 9 1/2 Mile Road.		50,000	200,000	600,000								850,000	Project depends upon FDOT completion of Holsberry pond expansion in 2022.
5		Regional Pond Construction in 11-Mile Creek Basin	Regional Pond Design-Construction in 11-Mile Creek Basin to accompany the stream/flood plain restoration improvements, including 12 regional stormwater management facilities (ponds). Three pond are listed as separate projects.					50,000		500,000		450,000	300,000	350,000	1,650,000	Project completion will require multiple grants to provide a complete realization of the 11-Mile Creek Basin Study Recommendations to improve both water quality in Perdido Bay and significant flood reduction. The total estimated project costs of \$47,000,000 is over at least a 10-year period.
5		Carver Park Area Drainage Portion of Project Improvements	Four-phase roadway and drainage improvement project for the area south of Muscogee Road, north of the Road Camp, east of Booker, and west of Ransom, requiring property pond acquisition and drainage conveyance improvements.				800,000		2,000,000						2,800,000	Design and acquisition needs to be completed prior to determining final costs
1 & 2		BASIN STUDY: Dogtrack South –Coral Creek – Mariners Village-Hampton Lakes	Drainage Study ONLY: Determine property acquisition needs, grant funding opportunities, and detailed conceptual plan, with costs estimates. Stream restoration and attenuation pond. Two creeks merge N. of Coral Creek, resulting in upstream flooding in Mariners Village and a creek along Dog Track Road. Piping South on Blue Angel is a design alternative.	200,000											200,000	Expect RESTORE funding. This costs if for STUDY ONLY for partial re-evaluation of Bayou Grande Basin Study. Flooding occurs primarily in District 1, but a majority of the improvements are planned in District 2.
1 & 2		Dogtrack South –Coral Creek – Mariners Village-Hampton Lakes Stream/Wetland Restoration with a Side Stream Attenuation Pond	Stream and wetland restoration and construction of an attenuation pond. Two creeks merge north of Coral Creek, resulting in upstream flooding the affects Mariners Village to the northwest and a creek along Dog Track Road to the northeast. Piping South on Blue Angel is another design alternative to compliment the project goals.	100,000		300,000	450,000								850,000	Grant funding opportunities to utilize Defense Infrastructure funding for property purchase, and RESTORE (TNC) funding. RESTORE total request is \$7.9M. Funded costs shown is Match funding for a \$4.4M project. Study needed to obtain a concept design, and aquisition needs, for further grant applications. RESTORE project ranked # 28 by the RAC, and selected by D1 Commissioner to move forward to Treasury. This project listed in the Nature Conservancy (TNC) Perdido Watershed Plan for RESTORE funding, requested for WMD Amendment #1 funding, and selected by D1 as a RESTORE project for funding. Only 25% Match funds shown from LOST 4

Public Works/Drainage LOST Projects

District	C/D	Project	Description	2018	2019	2020	2021	2022	2023	2024	2025	2026	2027	2028	Total	Notes
3 & 1		Kingfisher, Bush Street, and Interstate Circle Drainage	Eight Mile Creek Priority 5 Drainage to construct a regional pond to address flooding for Kingfisher, Blue Jay Way, Bush Street, and Interstate Circle			300,000							1,560,000		1,860,000	Funding to purchase pond site property while available on 2020. Property owner is willing to sale Property; Project submitted to TNC for RESTORE funding; match shown for \$2.5 M project
4 & 5		BASIN STUDY: Scenic Hills Basin Study Updates	Master Drainage Plan Study requires update to current Basin Study guidelines compatible with GIS formats, and improved recommendation based upon current drainage.							200,000					200,000	Master Drainage Plan Study requires update to current Basin Study guidelines compatible with GIS formats
Total				\$2,510,000	\$5,490,000	\$4,000,000	\$4,000,000	\$4,000,000	\$4,000,000	\$4,000,000	\$4,000,000	\$4,000,000	\$4,000,000	\$4,000,000	\$44,000,000	

Sheriff LOST Projects

District	C/D	Project	Description	2018	2019	2020	2021	2022	2023	2024	2025	2026	2027	2028	Total	Notes
9		Sheriff Facilities			888,167	888,167	888,167	888,167	888,167	888,167	888,167	888,167	888,167	888,167	8,881,670	
9		Vehicle/Equipment Replacement			4,000,000	4,000,000	4,000,000	4,000,000	4,000,000	4,000,000	4,000,000	4,000,000	4,000,000	4,000,000	40,000,000	
		Total			\$4,888,167	\$4,888,167	\$4,888,167	\$4,888,167	\$4,888,167	\$4,888,167	\$4,888,167	\$4,888,167	\$4,888,167	\$4,888,167	\$48,881,670	

Public Works/Transportation LOST Projects

District	C/D	Type	Project	Description	2018	2019	2020	2021	2022	2023	2024	2025	2026	2027	2028	Total	Notes
5	DRP		Ashcraft Road	Design	50,000											50,000	
5	DRP		Blue Berry Lane	Design	60,000											60,000	
5	DRP		Hauptert Lane	Design	50,000											50,000	
	DRP		OGCM		250,000											250,000	
5	DRP		Ashcraft Road	Construction	1,491,148											1,491,148	
5	DRP		Hauptert Lane	Construction	754,840											754,840	
5	DRP		Pine Barren Church Road	Design		100,000										100,000	
5	DRP		O'Farrell Road	Design		50,000										50,000	
5	DRP		Doran Road	Design		75,000										75,000	
5	DRP		Tobias Road	Design		50,000										50,000	
5	DRP		Hubbard Road	Design		50,000										50,000	
	DRP		OGCM			250,000										250,000	
5	DRP		Frank Ard Road	Construction		604,776										604,776	
5	DRP		Blue Berry Lane	Construction		967,280										967,280	
5	DRP		Tobias Road	Construction		307,360										307,360	
5	DRP		O.C. Phillips Road Ph II	Design			50,000									50,000	
5	DRP		Godwin Road	Design			50,000									50,000	
	DRP		OGCM				250,000									250,000	
5	DRP		Pine Barren Church Road	Construction			1,179,042									1,179,042	
5	DRP		Hubbard Road	Construction			723,200									723,200	
5	DRP		Water Tank Road	Design				50,000								50,000	
5	DRP		Toler Road	Design				50,000								50,000	
5	DRP		Four Star Farm Road	Design				50,000								50,000	
	DRP		OGCM					250,000								250,000	
5	DRP		O.C. Phillips Road Ph II	Construction				1,217,010								1,217,010	
5	DRP		Doran Road	Construction				1,196,218								1,196,218	
1	DRP		Sandy Lane	Design					50,000							50,000	
5	DRP		Jones Road	Design					120,000							120,000	
5	DRP		McCann Street	Design					50,000							50,000	
5	DRP		Fillingim Lane	Design					50,000							50,000	
	DRP		OGCM						250,000							250,000	
5	DRP		O'Farrell Road	Construction					435,050							435,050	
5	DRP		Godwin Road	Construction					201,140							201,140	
5	DRP		Toler Road	Construction					528,840							528,840	
5	DRP		Four Star Farm Road	Construction					479,120							479,120	
5	DRP		Fillingim Lane	Construction					400,000							400,000	
1	DRP		Helton Lane	Design						50,000						50,000	
5	DRP		Foster Road	Design						50,000						50,000	
5	DRP		Hall Road	Design						100,000						100,000	
	DRP		OGCM							250,000						250,000	
1	DRP		Sandy Lane	Construction						264,420						264,420	
5	DRP		McCann Street	Construction						160,008						160,008	
5	DRP		Jones Road	Construction						1,229,440						1,229,440	
5	DRP		Foster Road	Construction						333,124						333,124	
5	DRP		Water Tank Road	Construction						235,266						235,266	
5	DRP		York Road	Design							50,000					50,000	
5	DRP		Railroad Street	Design							50,000					50,000	
5	DRP		Arena Road	Design							50,000					50,000	
	DRP		OGCM								250,000					250,000	
5	DRP		Hall Road	Construction							1,596,690					1,596,690	
1	DRP		Helton Lane	Construction							572,684					572,684	
5	DRP		Koehn Road	Design								50,000				50,000	

Public Works/Transportation LOST Projects

District	C/D	Type	Project	Description	2018	2019	2020	2021	2022	2023	2024	2025	2026	2027	2028	Total	Notes
5	DRP		Spence Road	Design								100,000				100,000	
5	DRP		Robinson Street	Design								55,000				55,000	
	DRP		OGCM									250,000				250,000	
5	DRP		Railroad Street	Construction								642,744				642,744	
5	DRP		Arena Road	Construction								724,782				724,782	
5	DRP		York Road	Construction								536,524				536,524	
5	DRP		Cedartown Road	Design									65,000			65,000	
	DRP		OGCM										250,000			250,000	
5	DRP		Robinson Street	Construction									857,896			857,896	
5	DRP		Cedartown Road	Construction									954,850			954,850	
5	DRP		Koehn Road	Construction									384,200			384,200	
5	DRP		N. Pineville Road	Design										375,000		375,000	
5	DRP		S. Pineville Road	Design										720,000		720,000	
	DRP		OGCM											250,000		250,000	
5	DRP		Spence Road											1,414,760		1,414,760	
	DRP		OGCM												250,000	250,000	
5	DRP		N. Pineville Road	Construction											1,637,588	1,637,588	
4	Safety/Capacity		Olive Road East (Phase II)	Johnson Ave to Lode Star	6,500,000											6,500,000	
3	Safety/Capacity		Burgess / Creighton Extension for ROW	Creighton Road Extension and Realignment with Burgess Road; TPO PP #8	1,000,000											1,000,000	
5	Safety/Capacity		Kingsfield/297A Intersection Improvements. CST = \$1.3M	Reconstruction of intersection to include mast arm signals, turn lanes, ped features, etc. Must be constructed prior to August 2018 (Fall School Semester)	1,200,000											1,200,000	
2	Safety/Capacity		Perdido Key Drive Multi-Use Path (West)	10' Multi-Use Path from State Park Entrance to AL State Line. FDOT and County - Advanced Funding Agreement; FDOT to reimburse in FY21		2,246,000										2,246,000	
3	Safety/Capacity		Detroit Blvd.	US 29 to PF Road. 3-Lane Urban w/4' bike lanes and sidewalks			3,000,000									3,000,000	
5	Safety/Capacity		Old Chemstrand / CR95A Intersection Improvements	Install traffic signal at intersection				300,000								300,000	
3	Safety/Capacity		Pine Forest Road. PD&E = \$350,000 (TRIP Agreement)	Reconstruct Pine Forest Road from I-10 north to Nine Mile Road (possibly to CR297A). TRIP Application submitted - County would be liable for 50% of PD&E - \$175K						175,000						175,000	
			Pinestead Road	Nine Mile Rd. to Ten Mile Rd.				6,500,000	6,500,000							13,000,000	
5	Sidewalks		Chemstrand Rd. (Central)	Johnson to Nine Mile Rd.	700,000	500,000	500,000	300,000								2,000,000	
3	Sidewalks		Chemstrand Rd. (South)	Cody Ln. to existing sidewalk	300,000	500,000	250,000	450,000								1,500,000	
4	Sidewalks		Olive Rd. West (Phase I)	Cody Ln. to CR95A			250,000	250,000	360,000							860,000	
3	Sidewalks		Olive Rd. West (Phase II). PE & CST = \$1.1M	Cerny Rd. to Saufley Field Rd.					390,000							390,000	
1	Sidewalks		Muldoon Rd. PE & CST = \$660K	Saufley Field Rd. to Bellview Ave.					150,000							150,000	
1	Sidewalks		Muldoon Rd.	Tonawanda Dr. to Fairfield Dr.					100,000							100,000	
2	Sidewalks		61st Ave. PE & CST = \$400K	Mobile Hwy. to 61st Ave.						400,000						400,000	
2	Sidewalks		Tonawanda Dr. PE & CST = \$622.5K	Ten Mile Rd. to Kingsfield Rd.						600,000	22,500					622,500	

Public Works/Transportation LOST Projects

District	C/D	Type	Project	Description	2018	2019	2020	2021	2022	2023	2024	2025	2026	2027	2028	Total	Notes
5		Sidewalks	Chemstrand Road (North) PE & CST = \$1.5M	297A to Tate Rd.							500,000					500,000	
5		Sidewalks	Kingsfield Rd. PE & CST = \$2.2M	Fairfield Dr. to New Warrington Rd.							477,500	500,000	500,000	222,500		1,700,000	
1 & 2		Sidewalks	Jackson St. PE & CST = \$2.7M									500,000	500,000	777,500	1,000,000	2,777,500	
9		Bridges	Bridge Replacements per FDOT program	County fund design, permitting and 25% CST; FDOT funds remaining CST			1,277,778	1,277,778	1,277,778	1,277,778	1,277,778	1,277,778	1,277,778	1,277,778	2,555,556	12,777,778	
9		Bridges	Rehabilitation and Renovation program	Balance of funds not used as part of the replacement program will be allocated to rehabilitation & renovation of the remaining bridges in inventory.													
							1,277,778	1,277,778	1,277,778	1,277,778	1,277,778	1,277,778	1,277,778	2,555,556	1,277,778	12,777,778	
9			Intelligent Transportation System	Payback from D2 discretionary for Perdido Key Beach Access							1,000,000					1,000,000	
9		Traffic Calming	Traffic Calming			100,000	50,000	50,000	50,000	50,000	50,000	50,000	50,000	50,000	50,000	550,000	
			Total		\$12,355,988	\$5,800,416	\$8,857,798	\$13,218,784	\$12,844,706	\$6,277,814	\$7,174,930	\$5,964,606	\$6,117,502	\$7,643,094	\$6,770,922	\$93,026,556	

Public Works/Resurfacing LOST Projects

District	C/D	Project	From	To	2018	2019	2020	2021	2022	2023	2024	2025	2026	2027	2028	Total	Notes
1		PUEBLO DRIVE	CHOCTAW AVE	PALE MOON DR	34,731											34,731	
1		WARRIOR COURT	CUL DE SAC	PALE MOON DR	7,568											7,568	
1		DERWENT CIRCLE	69TH AVE	EAST END	28,453											28,453	
1		BUCKINGHAM AVE	MOBILE HWY	REGENTS AVE	67,206											67,206	
1		MULDOON ROAD	SAUFLEY FLD RD	CERNY ROAD	261,881											261,881	
1		MULDOON CIRCLE	MULDOON RD	WEST END	83,365											83,365	
1		SILVERSIDES LOOP	SOUTH GULF MANOR	SOUTH GULF MANOR	170,955											170,955	
1		CAVALLA LOOP	SOUTH GULF MANOR	SOUTH GULF MANOR	148,720											148,720	
1		SEA ROBIN ROAD	WEST END	EAST END	84,627											84,627	
1		AMBERJACK COURT	WEST END	EAST END	75,827											75,827	
1		TINOSA CIRCLE	SOUTH GULF MANOR	SOUTH GULF MANOR	203,339											203,339	
1		TINOSA LANE	TINOSA CIR	TINOSA CIR	28,219											28,219	
1		SOUTH GULF MANOR	MICHIGAN AVE	NORTH END	163,108											163,108	
1		MOTERRA ROAD	BAUER ROAD	TERRA LAKE CIR	40,480											40,480	
1		CLASSIC DRIVE	TERRA LAKE CIR	TERRA LAKE CIR	92,224											92,224	
1		HORTON DRIVE	TERRA LAKE CIR	TERRA LAKE CIR	92,224											92,224	
1		TERRA LAKE CIR	MONTERRA	MONTERRA	459,477											459,477	
2		CHOCTAW AVENUE	SORRENTO ROAD	CONDADO CIRCLE	44,469											44,469	
2		CONDADO CIRCLE	NORTH END	RED CLOUD ROAD	219,765											219,765	
2		MOLALE DRIVE	CUL-DE-SAC	CUL-DE-SAC	142,736											142,736	
2		PRIMERO COURT	CUL-DE-SAC	CONDADO CIRCLE	60,691											60,691	
2		BAHIA COURT	CUL-DE-SAC	CONDADO CIRCLE	101,757											101,757	
2		RED CLOUD ROAD	EAST END	WEST END	96,800											96,800	
3		ELLIOT STREET	DURAND AVENUE	UNTREINER AVENUE	125,781											125,781	
3		GERMAIN STREET	DURAND AVENUE	UNTREINER AVENUE	125,253											125,253	
3		PORTLAND STREET	UNTREINER AVE	WEST END	90,405											90,405	
3		RULE STREET	UNTREINER AVE	GROVELAND AVE	83,600											83,600	
3		RANGER DRIVE	ELLIOT STREET	DETROIT BLVD	77,616											77,616	
3		GROVELAND AVE	RULE STREET	CUL-DE-SAC	116,277											116,277	
3		DURAND AVE	DETROIT AVE	SOUTH END	103,253											103,253	
3		LEPLEY TRAIL	LEPLEY ROAD	NORTH END	22,963											22,963	
3		WAVELAND STREET	SYCAMORE DR	NORTH END	25,989											25,989	
3		PHYLLIS STREET	DAVIS HWY	LYNELL ST	64,156											64,156	
4		CHARTER OAKS LANE	CHARTER OAKS DRIVE	DESERT OAKS DRIVE	26,283											26,283	
4		CHARTER OAKS DRIVE	OLIVE ROAD	RAINES STREET	89,760											89,760	
4		CHARTER OAKS DRIVE	RAINES STREET	DESERT STREET	50,043											50,043	
4		PINOAK COURT	DESERT OAK DRIVE	CUL-DE-SAC	30,971											30,971	
4		DESERT OAK DRIVE	CUL-DE-SAC	CUL-DE-SAC	142,941											142,941	
4		CHARTER OAKS COURT	CHARTER OAKS DRIVE	CUL-DE-SAC	33,865											33,865	
4		SCENIC RIDGE DRIVE	SCENIC HWY	W'LY CUL-DE-SAC	111,256											111,256	
5		PACKWOOD DRIVE	KINGSFIELD RD	N'LY CUL-DE-SAC	51,978											51,978	
5		HOLSBERRY ROAD	TEN MILE	9 MILE ROAD	282,011											282,011	
5		BATSON LANE	PAULINE AVE	EAST END	22,720											22,720	
5		GREENLAND ROAD	PAVEMENT CHANGE	S/ CR 4	502,946											502,946	
5		CALVIN STREET	RAY ST	ORBY ST	20,529											20,529	
5		ORBY STREET	CHEMSTAND ROAD	RONDA STREET	236,427											236,427	
5		RAY STREET	CHEMSTAND ROAD	CALVIN STREET	56,711											56,711	
5		RONDA STREET	CALVIN STREET	LOU STREET	130,240											130,240	
1		WHITE PINE DRIVE	MEMPHIS AVE	N'LY S/D LIMITS			52,120									52,120	
1		BROOK BEND ROAD	W'LY CUL-DE-SAC	NE CUL-DE-SAC			39,371									39,371	
1		8 MILE CREEK ROAD	9 MILE RD	SOUTH END			141,425									141,425	

Public Works/Resurfacing LOST Projects

District	C/D	Project	From	To	2018	2019	2020	2021	2022	2023	2024	2025	2026	2027	2028	Total	Notes
1		RAMBLER DRIVE	MARCUS POINTE DRIVE	COMMERCE PARK CIR		105,404										105,404	
1		RAMBLER COURT	RAMBLER RD	EAST END		21,814										21,814	
1		RAMBLER PLACE	RAMBLER RD	EAST END		25,063										25,063	
1		ROCKCREEK AVENUE	CLEARWATER AVE	FAIRVIEW DR		66,661										66,661	
1		SANDY LANE	PINE FOREST RD	E'LY END		71,067										71,067	
1		PETRA CIR	BELLVIEW AVE	NORTH END		62,011										62,011	
1		AIRBLANC DRIVE	MEADSON ROAD	BAUER RD		74,267										74,267	
1		SOUTHBAY DRIVE	BLUE ANGEL PKWY	GULF BAY LANE		89,760										89,760	
1		ROSIRITO PLACE	TRACY ROAD	WEST END		22,000										22,000	
1		TUPELO AVENUE	CHICAGO AVE	NASHVILLE AVE		22,072										22,072	
1		PAMPAS TRAIL RD	SEAPINE CIR	SEAPINE CIR		53,856										53,856	
1		SEAPINE CIR	US 98	SEAPINE CIR		248,160										248,160	
1		GREEN PINE DRIVE	SEAPINE CIR	PAMPAS TRAIL ROAD		45,760										45,760	
1		CEDAR BLUFF DRIVE	SEAPINE CIR	PAMPAS TRAIL ROAD		45,232										45,232	
2		BONITA DRIVE	PALM LAKE DRIVE	NAPLES DRIVE		225,045										225,045	
2		NAPLES DRIVE	PALM LAKE DRIVE	WEST S/D LIMITS		324,075										324,075	
2		DUNDEE DRIVE	NAPLES DRIVE	BONITA DRIVE		98,795										98,795	
2		CARSON DRIVE	DUNDEE DRIVE	NAPLES DRIVE		131,648										131,648	
2		CHANDELLE CIRCLE	CHANDELLE DRIVE	CHANDELLE DRIVE		195,125										195,125	
2		GREGORY ST	OLD CORRY FLD R	NEW WARRINGTON		21,988										21,988	
2		GODFREY STREET	Q STREET	CITY LIMITS		44,000										44,000	
2		LEE STREET	PACE BLVD	CITY LIMITS		16,720										16,720	
3		L STREET	FAIRFIELD DR	HERMAN ST		116,123										116,123	
3		LEE STREET	S ST	GREEN STREET		252,560										252,560	
3		FAB STREET	ENSLEY ST	SOUTH END		27,082										27,082	
3		DETROIT BLVD	BRIDGE	PINE FOREST		559,086										559,086	
3		CABRAL STREET	BURGESS RD	BORDEAUX ST		85,067										85,067	
3		FORSHALEE STREET	BORDEAUX ST	CABRAL ST		64,885										64,885	
3		KELVIN TERRACE	BORDEAUX ST	NORTH END		113,359										113,359	
3		BORDEAUX STREET	CABRAL STREET	FORSHALEE		40,891										40,891	
4		SANDPIPER STREET	9 MILE ROAD	ACADEMY DRIVE		68,933										68,933	
4		ACADEMY DRIVE	SANDPIPER STREET	LATHAM STREET		31,890										31,890	
4		LATHAM STREET	ACADEMY DRIVE	WYATT STREET		17,048										17,048	
4		LE RUTH DRIVE	WEST END	EAST END		52,311										52,311	
4		HENCYE DRIVE	SANDPIPER STREET	9 MILE ROAD		35,552										35,552	
4		WYATT STREET	SANDPIPER ST	EAST END		44,526										44,526	
4		MALIBU CIRCLE	OLIVE RD	SOUTH END		29,063										29,063	
4		YANCEY AVENUE	OLIVE RD	PARAZINE AVE		95,557										95,557	
4		NORTHPOINTE PLACE	NORTHPOINTE BLV	SE CUL-DE-SAC		28,176										28,176	
4		WHISPER WAY	SCENIC HWY	WEST END		151,067										151,067	
4		PLANTATION ROAD	BURGESS RD	WIDTH CHANGE		231,381										231,381	
4		LATHAM STREET	ACADEMY DR	WYATT ST		18,195										18,195	
5		GODWIN CEMETARY ROAD CR 4		N/ PVMT END		45,394										45,394	
5		PICKETT AVENUE	WYMAN LN	EAST END		17,700										17,700	
5		CALLOWAY STREET	BOOKER ST	SOUTH&EAST END		109,448										109,448	
5		WOODRUN ROAD	9 MILE RD	CUL-DE-SAC		248,057										248,057	
5		WOODRUN ROAD	WOODRUN ROAD	CUL-DE-SAC		27,060										27,060	
5		WOODRUN LANE	WOODRUN RD	SOUTH END		28,704										28,704	
5		TARA-DAWN LANE	TARA-DAWN CIRCLE	CUL-DE-SAC		53,998										53,998	
5		TARA-DAWN CIRCLE	TEN MILE RD	TARA-DAWN CIR		298,364										298,364	
5		BETMARK ROAD	TEN MILE RD	NORTH END		166,276										166,276	

Public Works/Resurfacing LOST Projects

District	C/D	Project	From	To	2018	2019	2020	2021	2022	2023	2024	2025	2026	2027	2028	Total	Notes
5		SQUIRE DRIVE	E KINGSFIELD RD	NORTH END		37,371										37,371	
1		CANNONADE DRIVE	CR 293	EAST END			80,165									80,165	
1		CHERBOURG ROAD	MARSEILLE DR	* 420' SOUTH			24,677									24,677	
1		CRANBROOK AVENUE	FAIRVIEW DR	CLEARWATER AVE			69,801									69,801	
1		WATKINS TRAIL	ROEBLING TRAIL	DAYTONA DRIVE			76,325									76,325	
1		ROEBLING TRAIL	LILLIAN HIGHWAY	MOROSO DRIVE			79,024									79,024	
1		ELKHART CIR	DAYTONA DRIVE	CUL-DE-SAC			26,591									26,591	
1		DAYTONA CIR	ROEBLING TRAIL	MOROSO DRIVE			84,011									84,011	
1		MOROSO DRIVE	ROEBLING TRAIL	BUTTONWILLOW TRAIL			71,573									71,573	
1		SEABRING DRIVE	DAYTONA DRIVE	ROEBLING TRAIL			57,611									57,611	
1		GULFBAY LANE	SOUTHBAY DRIVE	CUL-DE-SAC			75,167									75,167	
1		CENTRE STREET	CUL-DE-SAC	CUL-DE-SAC			93,036									93,036	
1		HEATHERWOOD DRIVE	DOG TRACK RD	CUL-DE-SAC			75,621									75,621	
1		CREEK RIDGE DRIVE	CUL-DE-SAC	CUL-DE-SAC			177,848									177,848	
1		BRIDGE CREEK TERRACE	BRIDGE CREEK DRIVE	CUL-DE-SAC			96,697									96,697	
1		LITTLE CREEK LANE	LILLIAN DRIVE	ARUBA DRIVE			95,099									95,099	
1		BLUEBAY LANE	CREEK RIDGE DRIVE	CUL-DE-SAC			62,358									62,358	
1		LITTLE CREEK DRIVE	ARUBA DRIVE	LITTLE CREEK LANE			123,376									123,376	
1		SOFTSHOE CIRCLE	CREEK RIDGE DRIVE	CASSIA DRIVE			78,789									78,789	
1		SOFTSHOE CIR	CASSIA DRIVE	CREEK RIDGE DR			78,789									78,789	
2		CLEAR LAKE DRIVE	CHANDELLE DRIVE	CUL-DE-SAC			93,427									93,427	
2		CHANDELLE DRIVE	GULF BEACH HWY	CUL-DE-SAC			502,685									502,685	
2		CHANDELLE LAKE DRIVE	CHANDELLE DRIVE	BONITA DRIVE			288,171									288,171	
2		59TH AVENUE (NORTH)	JACKSON ST	MCNAIR LN			16,752									16,752	
2		GREEN STREET	SOUTH END	JACKSON ST			45,450									45,450	
2		KINNEAR AVENUE	FRANCES DR	46TH AVE			93,231									93,231	
2		ALMAX COURT	N 57TH AVE	W'LY END			25,500									25,500	
2		BALDERAS AVENUE	INNERARITY RD	SOUTH END			28,023									28,023	
2		PAULA AVE	PAULA AVE	PVMT END			22,999									22,999	
2		EDGEWOOD COURT (SOU' S	EDGEWOOD CIR	E'LY CUL-DE-SAC			7,929									7,929	
2		EDGEWOOD CIRCLE (SOUT	JACKSON ST	SE CUL-DE-SAC			64,387									64,387	
2		EDGEWOOD COURT	JACKSON ST	NORTH END			18,008									18,008	
3		HAYES STREET	EAST END	E/ H ST			61,618									61,618	
3		SARATOGA COURT	SARATOGA AVE	EAST END			14,060									14,060	
3		WRIGHT STREET	T ST	WEST END			25,257									25,257	
3		CAIN AVENUE	VICKIE ST	CALVERT ST			15,744									15,744	
3		HAWKINS ROAD	FOWLER AVE	EAST END			27,894									27,894	
3		FAIRCHILD STREET	1734'E/CHAPEL	CITY LIMITS			119,973									119,973	
3		J STREET	YONGE ST	N/ SCOTT ST			16,260									16,260	
3		WEAVER STREET	HOPE DRIVE	NORTH END			33,880									33,880	
3		OAKFIELD ROAD	PALAFIX STREET	BURGESS ROAD			162,301									162,301	
3		ANDREW AVENUE	FAIRFIELD DR	N/ RR CROSSING			83,312									83,312	
3		MAXWELL STREET	PACE BLVD	L ST			57,143									57,143	
4		OKALOOSA AVENUE	WALTON ST	WEST END			77,535									77,535	
4		KIPLING STREET	FAIRCHILD ST	NORTH END			27,034									27,034	
4		BLOODSWORTH LANE	CHAPEL ST	MARIE AVE			17,354									17,354	
4		CHAPEL STREET	S/ CITY LIMITS	VERNON ST			11,196									11,196	
5		FAIRCHILD STREET	1734'E/CHAPEL	CHAPEL ST			101,728									101,728	
5		SUNSHINE HILL RD	ATMORE HWY	MOLINO RD			820,404									820,404	
5		OLD CHEMSTRAND RD	HWY 29	MONSANTO PLANT			966,279									966,279	
1		MARLANE DRIVE	253'S/CLARA ST	GLENDORA ST				14,560								14,560	

Public Works/Resurfacing LOST Projects

District	C/D	Project	From	To	2018	2019	2020	2021	2022	2023	2024	2025	2026	2027	2028	Total	Notes
1		MARLANE DRIVE	253' SOUTH	CLARA ST				12,369								12,369	
1		MARLANE DRIVE	CLARA ST	CERNY RD				81,312								81,312	
1		GLASS DRIVE	MICHIGAN AVE	E SHORE DR				213,605								213,605	
1		SHELBY LANE	BEULAH ROAD	WEST END				157,569								157,569	
1		ORA DRIVE	TANTON ROAD	SOUTH END				187,323								187,323	
1		BELL RIDGE TRAIL	FOREST RIDGE DRIVE	CUL-DE-SAC				56,511								56,511	
1		BELL RIDGE DRIVE	9 MILE RD	CUL-DE-SAC				214,324								214,324	
1		BELL RIDGE CIRCLE	BELL RIDGE DRIVE	CUL-DE-SAC				25,183								25,183	
1		BELL RIDGE TRAIL	W'LY CUL-DE-SAC	FOREST RIDGE DR				39,131								39,131	
1		SUNBURY CIRCLE	SUNBURY DRIVE	SOUTHEND				20,533								20,533	
1		SUNBURY DRIVE	W SHORE DRIVE	SOMERSET DRIVE				40,773								40,773	
1		FRANK REEDER ROAD	BRIDLEWOOD DR	TOWER RIDGE RD				142,555								142,555	
1		ROSSI WAY	MEIR HENRY RD	DOWDY DR				30,460								30,460	
1		TANGEN STREET	LOCKHART ST	YOSHIDA ST				32,325								32,325	
1		DENVER AVENUE	MICHIGAN AVE	BOULDER AVE				32,322								32,322	
1		GALAXY COURT	W OF EL DORADO	E OF EL DORADO				30,911								30,911	
2		ALEXANDRIA DRIVE	N MADISON DR	N/ W WEBSTER				22,919								22,919	
2		LARUA STREET	N 61ST AVE	N 65TH AVE				68,049								68,049	
2		EDISON DRIVE	WEBSTER DRIVE	NORTHWEST END				221,349								221,349	
2		GARFIELD DRIVE	MADISON DRIVE	MADISON DRIVE				355,989								355,989	
2		ATLANTA AVENUE	GULF BEACH HWY	S/ BRIDGE				9,000								9,000	
2		GADSDEN STREET	W ST	GRANDVIEW ST				103,740								103,740	
2		WIGGINS AVENUE	JACKSON ST	SOUTH END				46,520								46,520	
2		BIRCH AVENUE	N 49TH AVE	FRANCES DR				31,953								31,953	
2		ALTON ROAD	SHADOW LAWN LN	CHASEVILLE ST				79,755								79,755	
2		HURD LANE	CITRUS ST E/	PRIVATE DRIVE				19,369								19,369	
2		RUNYAN STREET	GULF BEACH HWY	NORTH END				32,595								32,595	
2		T STREET	JACKSON ST	S/* N/BELMONT				35,689								35,689	
2		WINGATE STREET	RICHMOND ST	EAST END				8,091								8,091	
3		DIAMOND DIARY RD	US 29	COBB LANE				109,061								109,061	
3		KELLY AVE	LORETTA AVE	MASSACHUSETTS AVE				114,928								114,928	
3		LORETTA STREET	PALAFX STREET	PACE BLVD				65,770								65,770	
3		INDUSTRIAL BOULEVARD	W ST	US 29 / SR 95				150,737								150,737	
3		INDUSTRIAL BOULEVARD	CR 95-A	US 29 / SR 95				94,101								94,101	
3		BREEZEWOOD CIRCLE	LEPLEY RD	NORTH END				42,397								42,397	
3		JACQUELYN WAY	US 29 / SR 95	HANSEN BLVD				28,819								28,819	
3		PERTH AVENUE	LEPLEY RD	NORTH END				31,589								31,589	
3		AUSTIN STREET	PITTMAN AVE	CR 95A				55,422								55,422	
4		BEECHWOOD DRIVE	DESERT ST	RAINES ST				52,296								52,296	
4		BREWSTER STREET	DAVIS HWY	9 MILE RD				20,167								20,167	
4		ROYCE STREET	SKYLINE DR W/	272'E/DAVIS HWY				72,004								72,004	
4		DESERT STREET	KIPLING ST	WEST END				30,639								30,639	
4		JACK STREET	LANGLEY AVE	CITY LIMITS				20,918								20,918	
4		LEWIS STREET	DAVIS HWY	E/ PVMT CHANGE				106,001								106,001	
4		MARLOW STREET	ATWOOD DR	FRANK RD				26,185								26,185	
5		JAKES ROAD	PINEVILLE RD	ALBRITTON				158,329								158,329	
5		NOKOMIS ROAD	PINEVILLE RD	MEADOWS ROAD				1,085,099								1,085,099	
5		CITATION DRIVE	PINE FOREST RD	BONANZA DRIVE				116,453								116,453	
5		BONANZA DRIVE	CITATION DR	GALLOWS RD				128,529								128,529	
5		GALLOWS RD	CORRAL DRIVE	NORTH END				59,380								59,380	
5		CORRAL DRIVE	ST REGIS CUTOFF	MUSTANG DRIVE				108,416								108,416	

Public Works/Resurfacing LOST Projects

District	C/D	Project	From	To	2018	2019	2020	2021	2022	2023	2024	2025	2026	2027	2028	Total	Notes
1		MIMOSA DRIVE	BELLEFLOWER DR	INDA AVE					55,616							55,616	
1		BRIARWOOD DRIVE	US 98	N'LY CUL-DE-SAC					122,721							122,721	
1		68TH AVENUE	NORTH END	JACKSON ST					44,452							44,452	
1		ABBA ROAD	STILLER LAKE RD	NORTHWEST END					29,426							29,426	
1		BELLEFLOWER ROAD	FRANCISCAN DR	INDA AVE					85,243							85,243	
1		COMMERCE PARK DR	COMMERCE PARK CIRCLE	RAMBLER DR					56,992							56,992	
1		EL DORADO DRIVE	CONTINENTAL DR	WEST END					38,747							38,747	
1		HERMOSA CIRCLE	WAVELY DR	GRAYMONT LN					58,781							58,781	
1		HERTZ STREET	WHITE PINES DR	W'LY S/D LIMITS					22,176							22,176	
1		MIDAS ROAD	MULDOON RD	STEVENDALE RD					49,153							49,153	
1		NORTHBURY COURT	INTERSTATE CIR	S'LY CUL-DE-SAC					19,961							19,961	
1		WOODS ROAD	SASSER LN	SOUTH END					172,465							172,465	
2		FREMONT AVENUE	BRISTOL AVE	MEDFORD AVE					72,385							72,385	
2		WOODSMAN COURT	WOODSMAN DR	W'LY S/D LIMITS					18,074							18,074	
2		FOUNTAIN ABBEY	HUNTINGTON DR	FAIRFIELD DR					85,942							85,942	
2		GRUNDY STREET	WAYNE AVE	LOWNDE AVE					19,680							19,680	
2		IONA STREET	BARRANCAS AVE	DEXTER AVE					65,756							65,756	
2		GADSDEN STREET	ALICE ST	SOUTHWEST END					20,096							20,096	
2		GALVEZ ROAD	INNERARITY RD	SOUTH END					37,755							37,755	
2		CHESTNUT STREET	REDWOOD CR	CHESTNUT ST					16,715							16,715	
2		EDWARD STREET	RICHARD ST	MARY ST					18,999							18,999	
2		GERALD ROAD	SHERMAN AVE	MERCADO AVE					17,483							17,483	
2		BROADMOOR LANE	BAYSHORE DR	SR 292					14,271							14,271	
2		FRANCES DRIVE	KINNEAR AVE	JACKSON ST					59,159							59,159	
2		LOOP ROAD (NORTH)	BLUE ANGEL PKWY	S LOOP RD					139,111							139,111	
2		MADISON DRIVE (SOUTH)	NEW MEXICO DR	EDISON DR					250,076							250,076	
2		EHRMANN STREET	NAVY BLVD	MELDUM AVE					20,533							20,533	
2		MELDUM AVE	EHRMANN STREET	CHASEVILLE STREET					63,213							63,213	
2		MELDUM AVE	CHASEVILLE STREET	EAST END					36,300							36,300	
2		PINEWOOD LANE	NAVY BLVD	RR TRACKS					59,589							59,589	
2		WATER SPRAY DRIVE	BALDERAS RD	E'LY CUL-DE-SAC					12,472							12,472	
2		YONGE STREET	FERNWOOD STREET	EAST END					19,171							19,171	
2		BENSON PLACE	JACKSON ST	SOUTH END					16,021							16,021	
2		BIRCH AVENUE	N 48TH AVE	N 49TH AVE					30,680							30,680	
2		OMEGA COURT	CHESTNUT ST	NORTHWEST END					11,828							11,828	
2		PLANETARIUM AVE	MARS DR	NEPTUNE DR					29,349							29,349	
2		MADISON DRIVE (WEST)	EDISON DR	CURTIS DR					56,620							56,620	
2		POU STATION DRIVE	SUNSET AVE	SOUTH END					37,304							37,304	
3		CAROLYN WAY	HANSEN BLVD	US 29 / SR 95					28,616							28,616	
3		HAYES STREET	PACE BLVD	FAIRFIELD DR					144,402							144,402	
3		JONES STREET	RAWLS AVE	CR 95-A					80,551							80,551	
3		MILSTEAD STREET	US 29 / SR 95	EAST END					34,312							34,312	
3		Q STREET	MAXWELL ST	YONGE ST					34,144							34,144	
3		TIKI LANE	KENMORE RD	TRAVIS ST					40,856							40,856	
3		YOAKUM COURT	ARMENIA DR	CONCORDIA BLVD					60,283							60,283	
3		BRAINERD STREET	PACE BLVD	Y ST					172,765							172,765	
3		J STREET	JORDAN ST	N/ YONGE ST					62,371							62,371	
3		NABERS PLACE	CHIMES WAY	CONCORDIA BLVD					22,581							22,581	
3		PRICE STREET	* 149'S MPLWOOD	S/ BROAD ST					77,075							77,075	
3		VAN PELT LANE	US 29 / SR 95	CR 95-A					27,329							27,329	
4		EMILY STREET	TIPPIN AVE	EAST END					50,193							50,193	

Public Works/Resurfacing LOST Projects

District	C/D	Project	From	To	2018	2019	2020	2021	2022	2023	2024	2025	2026	2027	2028	Total	Notes
4		FAITH LANE	JOHNSON AVE	KLINGER ST					28,877							28,877	
4		LANGLEY AVENUE	9TH AVE	CITY LIMITS					163,411							163,411	
4		LANSING DRIVE	LANIER DR	E/ CITY LIMITS					52,657							52,657	
5		EVERSON AVENUE	ETTA ST	9 MILE RD					34,066							34,066	
5		WILLIAMS DITCH ROAD	CR 95A	PARKER ROAD					665,446							665,446	
5		FRETZ STREET	COVE AVE	BOWMAN AVE					76,267							76,267	
5		KAYZAN STREET	BOWMAN AVE	WEST END					32,208							32,208	
5		ZURICH STREET	ZELDA STREET	WESTSIDE DR					20,988							20,988	
5		ZELDA STREET	ZENDA STREET	SOUTH END					49,676							49,676	
5		DANA STREET	ZELDA STREET	WESTSIDE DR					21,076							21,076	
5		RIVERS ROAD	ZELDA STREET	WESTSIDE DR					20,812							20,812	
5		BRISTOL PARK ROAD	CR 97	DEAD END					177,232							177,232	
5		BRIESE LANE	OLIVE ROAD	JOHNSON AVE					164,071							164,071	
5		HAMILTON CROSSING DRI	KINGFIELD ROAD	HAMILTON CROSSING					126,133							126,133	
5		BOBWHITE DRIVE	HUMMINGBIRD BLVD	NORTH END					277,083							277,083	
5		WINDING LANE	SCENIC HWY	JOHNSON AVE					105,013							105,013	
5		CROCKETT ROAD	WEST ROBERTS ROAD	CRICKET RIDGE ROAD					85,536							85,536	
5		CRICKET RIDGE RD	KINGFIELD ROAD	KINGSFIELD ROAD					167,259							167,259	
5		CRICKETT CIR	CRICKET RIDGE DRIVE	CUL-DE-SAC					48,869							48,869	
5		ARCHER ROAD	TATE RD	W/ RR CROSSING					34,451							34,451	
5		ARIES DRIVE	WESTSIDE DR	WEST END					36,161							36,161	
5		BOOKER STREET	GRIGGS ST	EAST END					25,291							25,291	
5		BUXTON WAY	COLWYN DR	W'LY CUL-DE-SAC					10,440							10,440	
5		CHALET PLACE	JOHNSON AVE	CHALET PL					28,497							28,497	
5		SUNSHINE HILL ROAD	SUNCREST LN	S/ MOLINO RD					128,884							128,884	
5		SCEPTER COURT	CR 297A	W'LY CUL-DE-SAC					29,017							29,017	
5		DETROIT BLVD	BRIDGE	W/ ASHLAND AVE					134,583							134,583	
5		CR 297/W ROBERTS ROAD	RR CROSSING E/	US 29 / SR 95					25,945							25,945	
5		FRETZ STREET	COVE AVE	BOWMAN AVE					77,750							77,750	
5		STINNIS STREET	MUSCOGEE RD	TAYLOR ST					20,115							20,115	
5		ZENDA STREET	WESTSIDE DR	EAST END					28,886							28,886	
1		CLEARVIEW AVENUE	FAIRVIEW DR	CLEARWATER AVE						73,647						73,647	
1		HERTZ STREET	E'LY S/D LIMITS	W'LY CUL-DE-SAC						6,593						6,593	
1		CLEARWATER AVENUE	BLUE SPRINGS DR	MICHIGAN AVE						138,441						138,441	
1		CHELLIE ROAD	PINE FOREST RD	CHICAGO AVE						176,574						176,574	
1		DALLAS AVENUE	MICHIGAN	TUCSON AVE						32,693						32,693	
1		KING STREET	MULDOON RD	SOUTH END						158,571						158,571	
1		LAKE JOANNE DRIVE	72ND AVE	61ST AVE						107,874						107,874	
1		LEMOYNE LANE	MONTCLAIR RD	CHANTILLY WAY						56,948						56,948	
1		NANDORA AVENUE	COMMUNITY DR	MYSTIC LN						53,580						53,580	
1		PEPPER LANE	BELLVW PINES RD	W LN LOT 36-B						9,489						9,489	
1		PIPELINE ROAD	MICHIGAN AVE	BOSWELL DR						81,727						81,727	
1		PEPPERTREE COURT	S'LY CUL-DE-SAC	N'LY CUL-DE-SAC						16,485						16,485	
2		ARLINGTON STREET	ANTHONY ST	SOUTH END						18,102						18,102	
2		BALLARD STREET	ST REGIS DR	S MADISON DR						27,586						27,586	
2		KINARD AVENUE	N LOOP RD	ROBERTSON RD						48,400						48,400	
2		MCNAIR LANE	N 57TH AVE	N 59TH AVE						31,599						31,599	
2		SEAGLADES DRIVE	* 291'E/G B HWY	E/*695'SE/GB HY						17,921						17,921	
2		TRENTON DRIVE	POTOMAC DR	NORTHVIEW DR						18,188						18,188	
2		59TH AVENUE (NORTH)	AURORA AVE	KENDALL AVE						28,876						28,876	
2		ESSEX CIRCLE	ESSEX RD	SOUTH END						9,260						9,260	

Public Works/Resurfacing LOST Projects

District	C/D	Project	From	To	2018	2019	2020	2021	2022	2023	2024	2025	2026	2027	2028	Total	Notes
2		ETHEL WINGATE DRIVE	GULF BEACH HWY	CUL DE SAC						63,277						63,277	
2		GADSDEN STREET	EAST OF FOYE	WEST OF FOYE						13,052						13,052	
2		KIRK STREET	MOBILE HWY	JACKSON ST						65,193						65,193	
2		RENA LANE	ONO AVE	GROTTO AVE						14,254						14,254	
2		TONAWANDA DRIVE	BRENDA AVE	N 61ST AVE						8,475						8,475	
2		VANDERBILT ROAD	EMORY DR	FAIRFIELD DR						52,115						52,115	
2		TRENTON DRIVE	NORTHVIEW DR	EDISON DR						76,902						76,902	
2		MAYFAIR DRIVE	FOREST PARK DR	CLAIRMONT DR						42,338						42,338	
2		MASSACHUSETTS AVENUE	9378'E/MOBILE H	8183'E/MOBILE H						70,107						70,107	
2		PALMETTO AVENUE	W/ CHATTMAN ST	NAVY BLVD						27,319						27,319	
2		POTOMAC DRIVE	REVERE DR	EDISON DR						53,724						53,724	
2		PALAO ROAD	BARRANCAS	BAYSHORE DR						23,892						23,892	
2		MADISON DRIVE (EAST)	NEW MEXICO DR	N WEBSTER DR						49,852						49,852	
3		AVERY STREET	W ST	P ST						127,794						127,794	
3		HATTON STREET	D ST	H ST						74,555						74,555	
3		JORDAN STREET	T ST	W ST						57,600						57,600	
3		LENOX PARKWAY	CONCORDIA BLVD	W ST						40,115						40,115	
3		MAXAM STREET	BURGESS RD	NORTH END						29,645						29,645	
3		ROSALYN WAY	CONCORDIA BLVD	ARMENIA DR						38,473						38,473	
3		SCOTT STREET	PALAFIX ST	WEST END						52,089						52,089	
3		CAMELIA DRIVE (EAST)	CONCORDIA BLVD	CONCORDIA BLVD						70,323						70,323	
3		BLOUNT STREET	T ST	PACE BLVD						86,093						86,093	
3		CAMPBELL COURT	MAJORS RD	MAJORS RD						16,764						16,764	
3		BELLA DONNA STREET	SOUTH END	PACIFIC ST						13,821						13,821	
3		BLOUNT STREET	PACE BLVD	T ST						83,942						83,942	
3		CROSS STREET	RR TRACKS	CRESCENT DR						29,333						29,333	
3		AVERY STREET	P ST	W ST						125,679						125,679	
3		HOBART AVENUE	NORTH END	LEPLEY RD						32,091						32,091	
4		CASCADE DRIVE	SHELL ST	TAMARAC ST						53,136						53,136	
4		LANGLEY PLACE	LANGLEY AVE	DEAD END						30,666						30,666	
4		LANIER DRIVE	LANSING DR	CREIGHTON RD						40,187						40,187	
4		TAMARACK STREET	NORTH END	SOUTH END						43,747						43,747	
4		WILLIAMSBURG CIRCLE	OLIVE RD	NORTH END						35,092						35,092	
4		CAMALE CIRCLE	CAMALE DR	EAST END						20,599						20,599	
4		DELOACH STREET	HENDRIX AVENUE	STARK AVENUE						78,613						78,613	
4		DESERT STREET	120'W/BEECHWOOD	676'E/DESERT						60,102						60,102	
5		COMALANDER ROAD	COX RD	E/ CAMPGROUND						55,193						55,193	
5		BENJULYN ROAD	OLD NOVAK RD	NORTHEAST END						156,740						156,740	
5		OAKFIELD ROAD (EAST)	RR CROSSING	N/ BURGESS RD						104,180						104,180	
5		RAINES ROAD	CR 4	CR 168						394,169						394,169	
5		MAPLE STREET	BOOTH AVE	MONROE AVE						17,197						17,197	
5		BUCKHEAD TRACE	WM'S DITCH RD	SW S/D LIMITS						54,138						54,138	
5		CHADSON STREET	CHEMSTRAND RD	EAST END						56,792						56,792	
5		CIRCLE ROAD	ROCKAWAY RD	PVMT END						80,564						80,564	
5		CITATION DRIVE	PINE FOREST RD	BONANZA DR						115,913						115,913	
5		CYPRESS STREET (SOUTH)	CR 99A	S/ PVMT END						86,545						86,545	
5		EDEN LANE	RR CROSSING	CR 95-A						4,703						4,703	
5		RIGBY ROAD	BRIDGE	N/ CR 4						108,677						108,677	
5		WORLEY ROAD	MYSTIC SPRGS RD	EAST END						60,371						60,371	
5		CHILDERS STREET	520'E/LOU ST	LOU ST						26,598						26,598	
5		GRAND OAKS BLVD	BRANDERMILL DR	W'LY S/D LIMITS						9,655						9,655	

Public Works/Resurfacing LOST Projects

District	C/D	Project	From	To	2018	2019	2020	2021	2022	2023	2024	2025	2026	2027	2028	Total	Notes
5		NIGHTWIND DRIVE	WOODBREEZE DR	N'LY CUL-DE-SAC						15,525						15,525	
5		PARK LANE WEST	ROCKY AVE	HOMELAND AVE						19,667						19,667	
5		JUNIPER STREET	CR 99A	N/ PVMT END						132,656						132,656	
5		LAMBERT BRIDGE ROAD	VELOR RD	BEGIN BRIDGE						866,884						866,884	
1		FAIRVIEW DRIVE	MICHIGAN	MICHIGAN							225,974					225,974	
1		BERRYHILL ROAD	WEST END	BRIARWOOD DR							87,296					87,296	
1		TUPELO AVENUE	CHICAGO AVE	MEMPHIS AVE							16,368					16,368	
1		MIMOSA DRIVE	INDA AVE	BELLEFLOWER DR							53,885					53,885	
1		NORTHBURY COURT	S'LY CUL-DE-SAC	INTERSTATE CIR							15,664					15,664	
1		BOULDER AVENUE	CHICAGO AVE	MEMPHIS AVE							17,453					17,453	
1		ARTESIAN AVENUE	FAIRVIEW DR	CLEARWATER AVE							67,706					67,706	
1		RAINBOW AVE	SUN VALLEY DR	BLUE SPRINGS DR							50,219					50,219	
1		LEMOYNE LANE	CHANTILLY WAY	MONTCLAIR RD							55,552					55,552	
1		DALLAS AVENUE	TUCSON AVE	MICHIGAN							26,253					26,253	
1		VENTURA LANE	GRAYMONT LN	PVMT CHANGE							79,161					79,161	
1		TAMPICO CIRCLE	EAST END	TAMPICO BLVD							7,979					7,979	
1		WARRIOR COURT	CUL DE SAC	PALE MOON DR							7,568					7,568	
1		MIDLAND PARK DRIVE	TEMPLE LN	COMMUNITY DR							85,272					85,272	
1		PEPPERTREE COURT	PEPPERTREE CT	PEPPERTREE LN							17,893					17,893	
1		PIPELINE ROAD	BOSWELL DR	MICHIGAN AVE							75,973					75,973	
1		TINOSA LANE	TINOSA CIR	TINOSA CIR							28,219					28,219	
1		TUPELO AVENUE	DENVER AVE	LOUISVILLE AVE							15,840					15,840	
1		SUN VALLEY DRIVE	S/ WIDTH CHANGE	E SHORE DR							47,285					47,285	
1		EL MATADOR TERRACE	NORTH END	US 98							130,005					130,005	
1		DUNWALT ROAD	SOUTH END	DUNAWAY LN							102,373					102,373	
2		WINFRED AVENUE	CANAL DR	INNERARITY RD							38,476					38,476	
2		58TH AVENUE (NORTH)	FAIRFIELD DR	TONAWANDA DR							140,414					140,414	
2		WINFRED AVENUE	CANAL DR	INNERARITY RD							38,476					38,476	
2		CHANDELLE CIRCLE	CHANDELLE DR	CHANDELLE DR							97,563					97,563	
2		VANDERBILT ROAD	FAIRFIELD DR	EMORY DR							156,117					156,117	
2		58TH AVENUE (NORTH)	FAIRFIELD DR	TONAWANDA DR							140,414					140,414	
2		SHOEMAKER STREET	N/ JACKSON	SOUTH END							27,720					27,720	
2		CR 493/T STREET	FAIRFIELD DR	* @ AVERY							291,627					291,627	
2		JAPONICA AVENUE	INNERARITY RD	CANAL DR							40,744					40,744	
2		CALVARY DRIVE	DESMONDE DR	N WEBSTER DR							30,389					30,389	
2		61ST AVENUE (NORTH)	JACKSON ST	LILLIAN HWY							118,448					118,448	
2		CALVARY DRIVE	DESMONDE DR	N WEBSTER DR							30,389					30,389	
2		MAVILLA STREET	SUNDOWN ST	INNERARITY RD							59,962					59,962	
3		WOODLEY DRIVE	BURGESS RD	OAKFIELD RD							104,544					104,544	
3		LEBLANC WAY	MONPELLIER DR	LANDES DR							42,231					42,231	
3		HOBART AVENUE	LEPLEY RD	NORTH END							31,845					31,845	
3		WILCOX STREET	SUMPTER ST	KERSHAW ST							24,493					24,493	
3		BARBER STREET	MAYFLOWER AVE	US 29 / SR 95							28,372					28,372	
3		BELLA DONNA STREET	PACIFIC ST	SOUTH END							16,234					16,234	
3		LENOX PARKWAY	W ST	CONCORDIA BLVD							38,182					38,182	
3		BAARS STREET	S ST	W ST							72,395					72,395	
3		POND AVENUE	ORANGE AVE	JONES ST							112,948					112,948	
3		MOCCASIN TRAIL	NORTH END	LEPLEY RD							56,907					56,907	
3		KENMORE ROAD	US 29 / SR 95	MELANIE DR							26,156					26,156	
3		KYLE DRIVE	NORTH END	KYLE DR							17,478					17,478	
3		MEMORY LANE	AIRPORT BLVD	PALAFOX ST							73,744					73,744	

Public Works/Resurfacing LOST Projects

District	C/D	Project	From	To	2018	2019	2020	2021	2022	2023	2024	2025	2026	2027	2028	Total	Notes
3		OLD FAIRFIELD DRIVE	W/ FERNWOOD AVE	RR CROSSING							42,181					42,181	
3		YOAKUM COURT	W ST	CONCORDIA BLVD							34,907					34,907	
3		LLOYD STREET	E/ CITY LIMITS	PACE BLVD							7,568					7,568	
3		WILDEWOOD AVENUE	LUCERNE AVE	MEDFORD AVE							19,199					19,199	
3		WHITEHEAD DRIVE	EAST END	PALAFIX ST							46,933					46,933	
3		R STREET	FAIRFIELD DR	ST MARY AVE							73,627					73,627	
3		BARBER STREET	WEST END	US 29 / SR 95							17,600					17,600	
4		GEEKER STREET	STARK AVENUE	TIPPIN AV							25,620					25,620	
4		HYATT STREET	MCCOY ST	WEST END							30,589					30,589	
4		LAWTON STREET	PANDORA PL	OLIVE RD							129,219					129,219	
4		SMITH'S FISH CAMP ROAD	US 90	NORTH END							53,548					53,548	
4		LANSING DRIVE	673'E/MARIE AVE	256'E/MARIE AVE							16,309					16,309	
4		BEAUMONT DRIVE	TIPPIN AVE	SHERRILL DR							63,243					63,243	
4		HONEYWOOD DRIVE	E'LY CUL-DE-SAC	W'LY CUL-DE-SAC							58,960					58,960	
4		ROYCE STREET	272'E/DAVIS HWY	SKYLINE DR W/							77,709					77,709	
4		AGINCOURT RD	CITY LIMITS	ALVARADO RD							6,747					6,747	
4		BROOKLYN STREET	LAWTON ST	KIPLING RD							64,191					64,191	
4		DESERT STREET	676'E/DESERT	120'W/BEECHWOOD							61,835					61,835	
5		CR 99	ATMORE HWY	BEGIN BRIDGE							138,693					138,693	
5		CR 99	END BRIDGE	LAMBERT BRDG RD							253,508					253,508	
5		CR 99	WALNT HL SCH RD	N/ GOBBLER RD							241,093					241,093	
5		CR 99	LAMBERT BRDG RD	WALNT HL SCH RD							95,321					95,321	
5		CR 99	ROLEY RD	N/ CR 168							214,011					214,011	
5		CR 99	GOBBLER RD	BEGIN BRIDGE							68,229					68,229	
5		CR 99	BEGIN BRIDGE	ATMORE HWY							137,940					137,940	
5		DOCKINS ROAD	BREASTWORKS RD	SOUTH END							82,962					82,962	
5		CR 99	LAMBERT BRDG RD	END BRIDGE							252,917					252,917	
1		WOODS ROAD	SOUTH END	SASSER LN								114,058				114,058	
1		GODWIN LANE	W/ PVMT END	MOBILE HWY								158,048				158,048	
1		INDIANA AVENUE	COMMUNITY DR	DALLAS AVE							76,927					76,927	
1		FRANK REEDER ROAD	SPICEWOOD RD	TOWER RIDGE								142,888				142,888	
1		WAVERLY DRIVE	VENTURA LN	HERMOSA CT								17,072				17,072	
1		GREEN PINE DRIVE	PAMPAS TRAIL RD	SEAPINE CIR							45,760					45,760	
1		SEAPINE CIRCLE	SEAPINE CIR	US 98							248,160					248,160	
1		FRANCLIFF DRIVE	WEST END	RAMBLER DR							22,103					22,103	
1		PEBBLE DRIVE	GLASS DR	SUN VALLEY DR							35,200					35,200	
1		SHADETREE CIRCLE	NW CUL-DE-SAC	SHADOW PINES BL							12,555					12,555	
1		PETRA CIRCLE	NORTH END	BELLVIEW AVE							62,011					62,011	
1		LUCERNE AVENUE	BRISTOL AVE	CLIFTON AVE							77,440					77,440	
1		CHELSEA STREET	65TH AVE	68TH AVE							41,800					41,800	
2		T STREET	S/* N/BELMONT	JACKSON ST								35,708				35,708	
2		SHOEMAKER STREET	N/ JACKSON	SOUTH END							27,720					27,720	
2		MELDUM AVENUE	EAST END	CHASEVILLE ST							32,697					32,697	
2		ETHEL WINGATE DRIVE	CUL DE SAC	GULF BEACH HWY							43,296					43,296	
2		ROBERTSON AVENUE	NORTH END	N LOOP RD							79,200					79,200	
2		CARTIER ROAD	VINCENT RD	GULF BEACH HWY							101,249					101,249	
2		H STREET	N/ TEXAR DR	YONGE ST							169,605					169,605	
2		X STREET	MOBILE HWY	AVERY ST							158,156					158,156	
2		STAR LAKE DRIVE	STAR LAKE DR	BRIDGE(484068)							85,272					85,272	
3		KYLE DRIVE	ROLLING HLS RD	ROLLING HLS RD							88,948					88,948	
3		LENOX PARKWAY	CONCORDIA BLVD	ARMENIA DR							37,644					37,644	

Public Works/Resurfacing LOST Projects

District	C/D	Project	From	To	2018	2019	2020	2021	2022	2023	2024	2025	2026	2027	2028	Total	Notes
3		BRADBERRY PLACE	EAST END	IRVING AVE								11,792				11,792	
3		OWENS STREET	SOUTH END	TERRY DR								32,971				32,971	
3		MAXWELL STREET	Q ST	R ST								15,596				15,596	
3		INDUSTRIAL COURT	S'LY CUL-DE-SAC	W STREET								74,917				74,917	
3		SHAW AVENUE	DETROIT BLVD	JOHNSON AVE								18,260				18,260	
3		YOAKUM COURT	ARMENIA DR	HANSEN BLVD								100,662				100,662	
3		CAPITOL BLVD	FRUITVALE ST	COBB LN								110,587				110,587	
3		ROANNE LANE	MONTCLAIR RD E	VERSAILLES DR								28,233				28,233	
4		LOVEJOY STREET	MONROE ST	COPTER RD								61,468				61,468	
4		ST CEDD AVENUE	ST TIMOTHY AVE	ST ALBAN RD								86,533				86,533	
4		GEEKER STREET	HENDRIX AVENUE	STARK AVENUE								77,225				77,225	
4		ST BARNABAS STREET	ST ALBAN RD	ST AMATUS ST								51,568				51,568	
4		LANIER DRIVE	CITY LIMITS	FAIRCHILD ST								29,275				29,275	
4		KARLAND ROAD	LATHAM ST	DAVIS HWY								37,019				37,019	
4		NOWLINBURY ROAD	WEST END	9TH AVE NORTH								34,496				34,496	
4		MCALLISTER STREET	N/ CITY LIMITS	NIGHTINGALE ST								35,200				35,200	
4		YANCEY AVENUE	PARAZINE AVE	OLIVE RD								95,509				95,509	
4		TIPPIN AVENUE	OLIVE RD	END OF C&G								90,616				90,616	
4		HENDRIX AVENUE	SOUTH END	OLIVE RD								118,800				118,800	
5		CONSTITUTION PLACE	UNIVERSITY PARKWAY	600' WEST								61,464				61,464	
5		CR 99	HWY 97	STATELINE ROAD								1,726,325				1,726,325	
5		BRADLEY AVENUE	JUDY AVE	JENNINGS ST								30,798				30,798	
5		KILLAM ROAD	CR 4	CR 4A								366,310				366,310	
5		CRYSTAL CREEK CIRCLE	SHADOW CREEK DR	E'LY CUL-DE-SAC								13,510				13,510	
5		OAKFIELD ROAD (EAST)	CR 95-A	E/ RR CROSSING								61,536				61,536	
1		ESPERANTO DRIVE	MICHIGAN AVE	V ESCONDIDO DR									123,200			123,200	
1		TRIAD BOULEVARD	CARRIER DR	BLUE ANGEL PKWY									48,987			48,987	
1		DENVER AVENUE	HOUSTON AVE	BOULDER AVE									31,093			31,093	
1		EL DORADO DRIVE	CONTINENTAL DR	GALAXY CTS									68,288			68,288	
1		BLUE SPRINGS DRIVE	FAIRVIEW DR	E SHORE DR									130,411			130,411	
1		AMIENS WAY	ST NAZAIRE RD	CHERBOURG DR									33,616			33,616	
1		CUERRO COURT	WEST END	GRAYMONT LN									25,520			25,520	
1		BELLE CHASSE DRIVE	BELLE CHASSE WY	LI FAIR DR									30,389			30,389	
1		EL DORADO DRIVE	ATLAS	GALAXY									14,373			14,373	
1		AVONDALE ROAD	NORTH END	LANETT DR									42,885			42,885	
1		PEPPERTREE TERRACE	NORTH END	PEPPER TREE LN									79,435			79,435	
1		CHICAGO AVENUE	TUSCAN AVE	MICHIGAN									30,604			30,604	
1		NOKOMIS STREET	MINNETONKA ST	MUSCODA ST									54,462			54,462	
1		PLUMIERA PLACE	MAIKAI DR	KAINUA DR									96,448			96,448	
1		VENTURA LANE	PVMT CHANGE	LANETT DR									98,971			98,971	
1		LAS BRISAS DRIVE	SOUTH END	BENT OAK RD									35,317			35,317	
1		MARSEILLE DRIVE	MONTCLAIR RD	MICHIGAN									66,308			66,308	
1		DURHAM DRIVE	AVONDALE RD	WICKFORD LN									65,394			65,394	
2		FLANNAN ROAD	BRYANT RD	KALASH RD									36,569			36,569	
2		63RD AVENUE (NORTH)	S/ JACKSON ST	ROAD WIDENS									65,511			65,511	
2		IONA STREET	WILSON AVE	DEXTER AVE									17,307			17,307	
2		LYNCH STREET	SOUTH END	JACKSON ST									33,264			33,264	
2		CONRAD COURT	NORTH END	CONRAD ST									8,213			8,213	
2		GARCON BOULEVARD	INNERARITY RD	CANAL DR									36,300			36,300	
2		STRICKLAND PLACE	CUL DE SAC	N 59TH AVE									3,579			3,579	
2		LOOP ROAD (SOUTH)	GULF BEACH HWY	N LOOP RD									261,140			261,140	

Public Works/Resurfacing LOST Projects

District	C/D	Project	From	To	2018	2019	2020	2021	2022	2023	2024	2025	2026	2027	2028	Total	Notes
2		3RD STREET	S/ WINTHROP AVE	*380'S/BARANCAS									32,159			32,159	
2		CATALINA CIRCLE	EAST END	TEAKWOOD CR									35,141			35,141	
2		60TH AVENUE (NORTH)	SOUTH END	JACKSON ST									28,923			28,923	
2		58TH AVENUE (NORTH)	MARGARETTA BLVD	LILLIAN HWY									11,440			11,440	
2		EDWARD STREET	MARY ST	RICHARD ST									17,209			17,209	
2		CRUZAT WAY	SOUTH END	GORHAM ST									122,222			122,222	
2		BRUCE STREET	NORTH END	FAIRFIELD DR									61,013			61,013	
2		WARD BOULEVARD	CERVANTES ST	ROSS AVE									42,504			42,504	
2		ARROWHEAD ROAD	NORTH END	GULF BEACH HWY									112,444			112,444	
2		DESMONDE DRIVE	EAST END	AMAZON DR									32,853			32,853	
2		BIRCH AVENUE	N 49TH AVE	N 48TH AVE									29,148			29,148	
3		RANGER DRIVE	DETROIT BLVD	ELLIOTT ST									77,616			77,616	
3		MELANIE DRIVE	ANITA AVE	PINESTEAD RD									120,731			120,731	
3		CAMDEN ROAD	CHEMSTRAND RD	BELLINGTON RD									39,043			39,043	
3		HOLLINGSWORTH AVENUE	SOUTH END	SHARMON ST									27,480			27,480	
3		DEASON STREET	NORTH END	MICHIGAN AVE									42,729			42,729	
3		BURGESS ROAD (WEST)	WEST END	MAXIUM ST									23,931			23,931	
3		BAYLISS COURT	HANSEN BLVD	ARMENIA DR									65,658			65,658	
3		PACIFIC STREET	EAST END	PALAFOX ST									47,432			47,432	
3		BEELER STREET	MILSTEAD ST	PINESTEAD RD									20,944			20,944	
3		CROSS STREET	W ST	Z ST E/									34,027			34,027	
3		MICHIGAN AVENUE	E/ RR CROSSING	PIPELINE RD									62,011			62,011	
3		LUCERNE AVENUE	CLIFTON AVE	BURLINGTON AVE									92,820			92,820	
3		STRONG STREET	E/ CITY LIMITS	MOBILE HWY									71,524			71,524	
3		LYDIA AVENUE	VIVIAN DR	MELANIE DR									26,996			26,996	
3		MATCH STREET	SOUTH END	ENSLEY ST									28,864			28,864	
3		EL ESTRECHO DRIVE	SOUTH END	OLIVE RD									44,469			44,469	
3		ROSALYN WAY	HANSEN BLVD	ARMENIA DR									65,804			65,804	
3		CORA LANE	NW END	COBB LN									66,416			66,416	
3		HATTON STREET	Z ST	W ST									33,088			33,088	
4		LOVEJOY STREET	MONROE ST	COPTER RD									61,468			61,468	
4		ST CEDD AVENUE	ST TIMOTHY AVE	ST ALBAN RD									86,533			86,533	
4		GEEKER STREET	HENDRIX AVENUE	STARK AVENUE									77,225			77,225	
5		7TH AVE	OLD CHEMSTRAND	SOUTH END									21,824			21,824	
5		RIGBY ROAD	STILL RD	E/ BRIDGE									251,639			251,639	
5		SPRINGMIER PLACE	FLEMING DR	WEST END									53,514			53,514	
5		RUFUS STREET	ORBY ST	RONDA ST									30,458			30,458	
5		SAGEBRUSH TRAIL	FOWLER AVE	SOUTHWEST END									57,123			57,123	
5		CROCKETT ROAD	CRICKET RDG RD	S'LY S/D LIMITS									8,717			8,717	
5		HARVEST HILL DRIVE	US 29 / SR 95	US 29 / SR 95									48,369			48,369	
5		MEADOWS ROAD	RR CROSSING	W/ NOKOMIS RD									377,217			377,217	
5		TELERAN DRIVE	JOEL ST	CHEMSTRAND RD									135,373			135,373	
5		TIMBER RIDGE ROAD	TIMBER RIDGE DR	CHEMSTRAND RD									91,456			91,456	
5		ASHFORD ROAD	KINGS RD	E'LY 125'									14,403			14,403	
5		CAMERO LANE	ST REGIS CUTOFF	SOUTH END									35,605			35,605	
5		CR 4	12474'W/CR 99	ATMORE HWY									268,344			268,344	
5		WILLIAMS DITCH ROAD	400'W/WISHBONE	WLMS DITCH LN									68,473			68,473	
5		AMY STREET	HERSCHELL ST	LAURA ST									31,930			31,930	
5		BECKS LAKE ROAD	RR CROSSING	PVMT CHANGE									51,108			51,108	
5		CRYSTAL WELLS PLACE	OLIVE RD	NORTH END									68,150			68,150	
5		CR 97/BARRINEAU PK RO,	ANNIEBELL DR	RIVER ANNEX RD									319,934			319,934	

Public Works/Resurfacing LOST Projects

District	C/D	Project	From	To	2018	2019	2020	2021	2022	2023	2024	2025	2026	2027	2028	Total	Notes
1		GLYNQUIST AVENUE	PARDA BLVD	PARDA BLVD										57,327		57,327	
1		TUPELO AVENUE	LOUISVILLE AVE	MONTGOMERY AVE										15,576		15,576	
1		TUCSON AVENUE	LOUISVILLE AVE	MONTGOMERY AVE										18,768		18,768	
1		WINDSTONE DRIVE	W'LY CUL-DE-SAC	GREENWELL ST										130,827		130,827	
1		KATYDID COURT	DOWNING DR	MARCUS PT BLVD										23,173		23,173	
1		BELAIR ROAD	* 1155' WEST	DEAUVILLE WAY										62,113		62,113	
1		SLASH PINE ROAD	NORTH END	BLUE ANGEL PKWY										54,868		54,868	
1		HILLCREST AVENUE	COMMUNITY DR	PINE FOREST RD										127,551		127,551	
1		DOVER AVENUE	HOUSTON AVE	DEERWOOD RD										68,640		68,640	
1		DALLAS AVENUE	MICHIGAN AVE	BOULDER AVE										30,604		30,604	
1		TUPELO AVENUE	DALLAS AVE	NASHVILLE AVE										15,664		15,664	
1		STRATFORD ROAD	PINE FOREST RD	CHELLIE RD										79,347		79,347	
1		ATLAS STREET	S/ FAIRFIELD DR	*N/EL DORADO DR										39,013		39,013	
1		ROWE LANE	TOMLINSON RD	CHARBAR DR										28,233		28,233	
1		PEPPERTREE LANE	NW S/D LIMITS	US 98										63,947		63,947	
1		RAINBOW AVENUE	BLUE SPRINGS DR	LAGOON DR										15,273		15,273	
1		LITTLE CREEK LANE	S'LY S/D LIMITS	LILLIAN HWY										86,533		86,533	
1		MARSEILLE DRIVE	SOUTH END	MONTCLAIR RD										49,925		49,925	
1		BELLEAU WOOD COURT	W'LY CUL DE SAC	CARRIER DR										15,204		15,204	
1		BRIDLEWOOD ROAD	FRANK REEDER RD	BRIDLEWOOD DR										59,180		59,180	
2		TALLADEGA TRAIL	CHEROKEE TR	TONAWANDA DR										59,498		59,498	
2		IONA STREET	WISTERIA AVE	POPPY AVE										17,356		17,356	
2		59TH AVENUE (NORTH)	ANNETTE ST	MARGARETTA BLVD										51,656		51,656	
2		BRENDA AVENUE	61ST AVE	TONAWANDA DR										120,413		120,413	
2		GARY AVENUE	AVERY ST	MORENO ST										27,378		27,378	
2		63ND AVENUE (NORTH)	S/ ROAD WIDENS	LILLIAN HWY										96,898		96,898	
2		VEDEE LANE	MONTCLAIR RD E	ROCHELLE DR										37,644		37,644	
2		58TH AVENUE (NORTH)	KENDALL AVE	AURORA AVE S/										14,144		14,144	
2		ELECTRA LANE	COBIA LANE	CHALLENGER WAY										47,227		47,227	
2		WILL SHIVER LANE	FAIRFIELD	NORTH END										52,976		52,976	
2		BECKSTROM ROAD	AVON RD	CAMBRIA DR										27,911		27,911	
2		ALEXANDRIA DRIVE	EDISON DR	N/W WEBSTER DR										91,989		91,989	
2		V STREET	S/ CITY LIMITS	BLOUNT ST										82,280		82,280	
2		MASSACHUSETTS AVENUE	8183'E/MOBILE H	811'E/MOBILE HW										432,491		432,491	
3		ARCADIA ROAD	CAMDEN RD	BELAND RD										45,418		45,418	
3		WEBB LANE	MOBILE HWY	DOGWOOD DR										48,351		48,351	
3		MORENO STREET	GREEN ST	EAST END										83,502		83,502	
3		LEE STREET	525'E/J ST	J ST										25,667		25,667	
3		CROSS STREET	D ST	I ST E/										92,444		92,444	
3		WEAVER STREET	NORTH END	HOPE DR										33,880		33,880	
3		KOKOMO ROAD	BELAND RD	BELLINGTON RD										21,164		21,164	
3		HERRINGTON DRIVE	CUL-DE-SAC	CHANNING										34,907		34,907	
3		LOIRE WAY	MONTCLAIR RD E	VERSAILLES DR										25,544		25,544	
3		COBB LANE	NORTH END	CAPITOL BLVD										77,440		77,440	
3		AARON DRIVE	CHANNING PL	LANCER DR										19,243		19,243	
3		HOYT STREET	OAKFIELD RD	FORSHALEE RD										18,304		18,304	
3		VIVIAN DRIVE	TINA AVE	ANITA AVE										61,468		61,468	
3		DEVANE STREET	US 29 / SR 95	CR 95-A										79,200		79,200	
3		STRONG STREET	E/ N ST	CITY LIMITS										61,404		61,404	
3		RALEIGH CIRCLE	DETROIT BLVD	DETROIT BLVD										126,632		126,632	
3		HERMAN AVENUE	PACE BLVD	S ST										86,338		86,338	

Public Works/Resurfacing LOST Projects

District	C/D	Project	From	To	2018	2019	2020	2021	2022	2023	2024	2025	2026	2027	2028	Total	Notes
4		DOGWOOD TERRACE	CUL DE SAC	CREIGHTON RD										37,840		37,840	
4		BRISKEY COURT	WEST END	DUVAL ST										23,447		23,447	
4		FONTAINE STREET	E/ CITY LIMITS	DAVIS HWY										50,844		50,844	
4		RAINES STREET	HENDRIX AVE	STARK AVE										76,364		76,364	
4		PHENIX PLACE	NORTH END	ATWOOD DR										15,312		15,312	
4		DEWRELL SQUARE	NORTH END	JOHN CARROLL DR										17,478		17,478	
4		LANIER DRIVE	NORTH END	FAIRCHILD ST										27,534		27,534	
4		HENCYE DRIVE	9 MILE RD	SANDPIPER ST										35,552		35,552	
4		CASCADE DRIVE	DAVIS HWY	LEON ST										32,971		32,971	
4		FRAZIER STREET	EAST END	GRAVES RD										24,092		24,092	
4		CHARTER OAKS COURT	NE CUL-DE-SAC	CHARTER OAKS DR										16,485		16,485	
5		SANTA ROSA ROAD	N PLAZA RD	WELL LINE RD										193,541		193,541	
5		BENJULYN ROAD	NORTHEAST END	OLD NOVAK RD										155,320		155,320	
5		LAMBERT BRIDGE ROAD	E/ WALKER RD	END BRIDGE										131,780		131,780	
5		RAYMAR STREET	NORTH END	9-1/2 MILE RD										34,848		34,848	
5		OAKFIELD ROAD (EAST)	N/ BURGESS RD	RR CROSSING										103,899		103,899	
5		CHALET PLACE	CHALET PL	JOHNSON AVE										20,533		20,533	
5		ROSALYN WAY	PALAFOX PKWY	HANSEN BLVD										10,756		10,756	
5		CHILDERS STREET	520'E/LOU ST	CHEMSTRAND RD										192,955		192,955	
5		JUDY AVENUE	NORTH END	OLD CHEMSTRAND										22,147		22,147	
5		CEDARTOWN RD	CR 95A	5315' EAST										233,860		233,860	
5		BRENTCO ROAD	PVMT CHANGE	ZIGLAR RD										75,328		75,328	
5		RANSOM STREET	WASHINGTON ST	BOOKER ST										17,258		17,258	
5		CR 184/QUINTETTE ROAD	W/ RR CROSSING	ROCKY BRANCH RD										519,376		519,376	
5		PINE BARREN ROAD	BOGIA RD	S/ PVMT END										271,223		271,223	
1		MONTEGO DRIVE	NORTH END	CONTINENTAL DR											66,997	66,997	
1		YOSHIDA STREET	MOBILE HWY	TANGEN ST											39,248	39,248	
1		LOCKHART STREET	MUSCODA ST	MOBILE HWY											75,739	75,739	
1		DALLAS AVENUE	BELLVIEW AVE	SEATTLE AVE											59,156	59,156	
1		MEADSON ROAD	BAUER RD	MEADSON CIR											153,355	153,355	
1		BRISTOL AVENUE	MEDFORD AVE	MICHIGAN AVE											47,862	47,862	
1		BERLING ROAD	SOUTH END	SAUFLEY FLD RD											55,768	55,768	
2		REVERE DRIVE	ALEXANDRIA DR	EDISON DR											63,184	63,184	
2		ESSEX ROAD	FOREST PARK DR	CLAIRMONT DR											41,800	41,800	
2		COBIA STREET	SEAGLADES DR	GULF BEACH HWY											14,789	14,789	
2		HARVEY STREET	77TH AVE	72ND AVE											67,007	67,007	
2		KIRK STREET	MOBILE HWY	AVERY ST											155,310	155,310	
2		47TH AVENUE (NORTH)	YORKSHIRE AVE	JACKSON ST											71,231	71,231	
2		65TH AVENUE (SOUTH)	MYRTLE HILLS CR	PENTON											23,985	23,985	
2		GREEN STREET	MOBILE HWY	JACKSON ST											72,453	72,453	
2		ELIASBERG STREET	BAINBRIDGE AVE	WINTON AVE											105,307	105,307	
2		HOLMES DRIVE	CHANGE IN WIDTH	WINTHROP AVE											33,684	33,684	
2		RUNYAN STREET	GULF BEACH HWY	WINTHROP AVE											21,804	21,804	
2		LINDA STREET	N 57TH AVE	DELUNA DR											62,773	62,773	
2		LAKWOOD ROAD	WEIS LN	* @ ALBA PLENA											75,191	75,191	
2		SEAGLADES DRIVE	E/ FLAMINGO ST	*2322'SE/G B HY											13,772	13,772	
2		MADISON DRIVE (NORTH)	ALEXANDRIA DR	CURTIS DR											80,764	80,764	
2		GAFFNEY STREET	LEGAIR CR	WIGGINS AVE											25,960	25,960	
2		GRAUPERA STREET	MILLS AVE	PAULDING AVE											51,480	51,480	
2		UTAH COURT	NORTH END	NEW YORK DR											7,040	7,040	
2		HALE STREET	NORTH END	WABASH AVE											28,160	28,160	

Public Works/Resurfacing LOST Projects

District	C/D	Project	From	To	2018	2019	2020	2021	2022	2023	2024	2025	2026	2027	2028	Total	Notes
2		DIXON LANE	ODESS LN	BARRANCAS											22,220	22,220	
2		CHANDELLE DRIVE	W'LY S/D LIMITS	E'LY S/D LIMITS											76,384	76,384	
2		ALVIN DRIVE	N'LY END	GULF BEACH HWY											38,192	38,192	
3		SCOTT STREET	WEST END	PALAFOX ST											50,796	50,796	
3		ST MARY AVENUE	S ST	PACE BLVD											80,725	80,725	
3		VAN PELT LANE	US 29 / SR 95	W STREET											126,133	126,133	
3		HANSEN BOULEVARD	BEVERLY PKWY	MICHIGAN AVE											33,831	33,831	
3		DODGE ROAD	HANCOCK LN	DUCHESS RD											57,904	57,904	
3		KELVIN TERRACE	NORTH END	BORDEAUX ST											95,979	95,979	
3		JORDAN STREET	W ST	T ST											55,264	55,264	
3		LARUA STREET	GRANDVIEW ST	W ST											88,264	88,264	
3		L STREET	CITY LIMITS	JORDAN ST											70,576	70,576	
3		MOSS LANE	VAN PELT LN	BEGIN C & G											66,645	66,645	
3		OAKFIELD ROAD (WEST)	CR 95-A	US 29 / SR 95											131,902	131,902	
4		ELY ROAD	COPTER RD	JOHNSON AVE											315,573	315,573	
4		COPTER ROAD	891' EAST	PAUL STARR RD											65,340	65,340	
4		BULEVAR MENOR	CR 399/VIA DE LUNA	CR 399/VIA DE LUNA											52,037	52,037	
4		KIRSTEN DRIVE	NW CUL-DE-SAC	LANGLEY AVE											38,309	38,309	
4		BETA LANE	SOUTH END	FAIRCHILD ST											26,869	26,869	
4		OLD SPANISH TRAIL ROAD	TRADEWINDS DR	OLIVE RD											137,163	137,163	
4		NORTHPOINTE COURT	E'LY CUL-DE-SAC	NORTHPOINTE BLV											25,227	25,227	
4		PAUL STARR DRIVE	PVMT CHANGE	COPTER DR											86,240	86,240	
4		CORTO DRIVE	RIO VISTA DRIVE	RIO VISTA DRIVE											38,573	38,573	
4		ROSEMONT COURT	W'LY CUL-DE-SAC	ROSEMONT DR											8,741	8,741	
4		PENNY AVENUE	N/CITY LIMITS	HELEN ST											5,432	5,432	
4		LEESBURY DRIVE	WEST END	9TH AVE (NORTH)											37,840	37,840	
4		WHISPER DRIVE	BAYWOODS LN	WHISPER WAY											89,760	89,760	
4		TIPPIN AVENUE	CITY LIMITS	OLIVE RD											120,804	120,804	
4		EMILY STREET	EAST END	TIPPIN AVE											48,459	48,459	
5		MORGAN ROAD	BEGIN BRIDGE	CR 99A											340,208	340,208	
5		HORSEMEN'S PATH	DEER RIDGE ROAD	SOUTHERN OAKS											48,693	48,693	
5		JENNINGS STREET	WYMAN LN	OLD CHEMSTRAND											38,108	38,108	
5		PINE FOREST ROAD	ATMORE HWY	3928' SOUTH											191,794	191,794	
5		RAYMAR STREET	9-1/2 MILE RD	NORTH END											90,550	90,550	
5		SHADOW CREEK DRIVE	SHADOW RIDGE DR	CROOKED OAK DR											69,894	69,894	
5		STILL ROAD	CR 4	RIGBY ROAD											146,381	146,381	
5		TIMBER RIDGE DRIVE	CHEMSTRAND RD	WEST END											116,451	116,451	
5		WHIPPOORWILL DRIVE	EAGLE DR	EAST END											73,837	73,837	
5		SPRING CREEK CIRCLE	E'LY CUL-DE-SAC	SHADOW CREEK DR											18,891	18,891	
5		PINE FOREST ROAD	3928' SOUTH	ATMORE HWY											192,036	192,036	
5		JENNINGS STREET	OLD CHEMSTRAND	WYMAN LN											39,111	39,111	
5		ALEXIA AVENUE	BROAD ST	DUNKIRK ST											16,427	16,427	
5		BECKS LAKE ROAD	PVMT CHANGE	RR CROSSING											51,333	51,333	
5		CR 97/BARRINEAU PK RO,	CHURCHHOUSE BR	COWDEVIL CREEK											364,760	364,760	
Total					\$5,332,597	\$5,338,562	\$5,372,091	\$5,044,026	\$5,716,491	\$5,279,679	\$5,384,864	\$5,284,185	\$5,213,089	\$5,483,277	\$5,403,475	\$58,852,337	

Projects for Consideration

District	C/D	Agency	Project	Description	2018	2019	2020	2021	2022	2023	2024	2025	2026	2027	2028	Total	Notes
9	SoE		Voting Tabulation System	Update/Replacement				133,227								133,227	
3	Detention		Jail Construction Phase II	Replacement of the Main Jail beds.												73,000,000	
	Public Works/Transportation		9th Avenue/Langley/Tippin	Major Intersection improvements. Estimated \$6m in ROW and \$20m CST/CEI												26,000,000	
	NHS/CRA		Sewer Expansion	Sewer Expansion in CRA areas												5,200,000	
3			Community Center	Community Center located in the area of the new jail.												5,000,000	
2	NHS/CRA		W. Navy Blvd. Construction													10,000,000	
	Public Works/Transportation		Traffic Congestion Plan													20,000,000	
2	Natural Resources		Perdido Key Public Access	East of PK State Park - Matching Funds	1,000,000		1,000,000		1,000,000							3,000,000	
2	Natural Resources		Perdido Key Public Access	Parking/Bathrooms/Showers/ADA Access		200,000	200,000	200,000	200,000	200,000	200,000					1,200,000	
4	Natural Resources		Beach Nourishment	Pensacola Beach - Matching Funds	500,000	500,000	500,000	500,000	500,000	500,000	500,000	500,000	500,000	500,000	500,000	5,500,000	
9	Natural Resources		Vehicle Replacement	Code Enforcement, Mosquito Control	50,000		50,000		50,000		50,000		50,000		50,000	300,000	
	Natural Resources		Beach Enhancement	Place Sand from Pensacola Pass on Johnson Beach - Matching Funds	100,000	100,000	100,000	100,000	100,000	100,000	100,000	100,000	100,000	100,000	100,000	1,100,000	
	Natural Resources		Reef Monitoring	Boat Engine Replacement - Marine Resources			50,000									50,000	
	FloridaWest		FloridaWest	FloridaWest Operational Funding	550,000	550,000	550,000	550,000	550,000	550,000	550,000	550,000	550,000	550,000	550,000	6,050,000	
			BASIN STUDY: Carpenters Creek Upper Olive Area Sub-Basin Study (Start w/LOST3 Drainage Basin Study Fund initiative)	Master Drainage Plan Study specific to the Olive Road Area, the primary upper basin draining through the City, with drainage concept focus on Olive Road Sidewalks. Depending upon funding, the Study expansion may extend to other areas in the portion of basin within City Limits, to implement the FDEP approved Bacteria Pollution Control Plan (BCA).													Start with LOST3 Drainage Basin Study Funds, to assist in the Carpenters Creek RESTORE project, and provide drainage solutions for Olive Road West sidewalk and drainage improvements. Study may expand to other areas of the basin through coordination with the City of Pensacola. City of Pensacola funding and/or RESTORE funding will determine if project will be expanded to other areas of the basin within City limits.
3 & 4	Public Works/Drainage															400,000	
1	Public Works/Drainage		Youpon/Pebble Creek/Deerfield	Reduce area flooding by enlarging existing ponds and increasing area culvert capacities.												663,785	
1	Public Works/Drainage		Stagecoach/Wilshire/Mobile Highway	Increase capacity of drainage structure at Mobile Highway and improve downstream channel to prevent roadway overtopping and residential flooding.												70,699	
1	Public Works/Drainage		Lake Charlene/Querido Heights-Warrington Basin Branch B	Reconstruct Lake Charlene overflow structure and outfall ditch. Reconstruction of the 69th Avenue drainage system to reduce discharges to Lake Charlene, increase the capacity of the 61st Avenue drainage system, and increase the capacity of the 61st Ave, Kittyhawk Drive, Lake Charlene Lane, and Myrtle Hill Circle drainage system. Solutions presented in the Master Drainage Plan can be replaced by Lake Charlene Phase 2 (Bridletrail outfall)												6,765,919	Lake Charlene Phase 2 (Bridle trail) Area Drainage provides similar drainage results

Projects for Consideration

District	C/D	Agency	Project	Description	2018	2019	2020	2021	2022	2023	2024	2025	2026	2027	2028	Total	Notes
1			Avondale Estates - Bayou Marcus Branch E	Roadway/drainage improvements for Cerny Road area and area North of Cerny to provide possible pond outfall solutions for Saufley Field -Muldoon Area Ponds. Concept plans requires further study for alternate pond outfall alternative considering Velma Pond expansion.												3,300,000	Velma Street Expansion and pond outfall is an alternative option. Project is needed for the Avondale area to address yard and street flooding as the primary project. Also a secondary alternative for outfall solution for Muldoon Area Pond to address extensive home flooding. However, Velma-Muldoon outfall is more costs effective project. Estimated costs may be reduced depending pond parcel acquisition success.
1			Lanette Drive	Drainage improvements of another portion of Avondale; Construct new stormwater system for the area around Lanett Drive to reduce flooding in the area.												1,000,000	Not funded by LOST 4 priority
1			Pine Forest/Klondike Road	Construct two new retention/detention ponds and increase capacity of driveway culverts along Klondike Rd to reduce peak flows downstream, and reduce scour.												2,116,233	
1			Lake Francis outfall at Pine Forest Road (Tributary 10-A of Eight Mile Creek Basin Study_)	Tributary 10-A of Eight Mile Creek Basin Study: Increase the capacity of the culvert under Pine Forest Road at Lake Francis to decrease roadway flooding and accommodate the improved secondary sewer system.												58,307	
1			Bronson Airfield design 3 (entire)	Construct a pond over the entire Bronson Airfield property.												27,631,968	
1			Tributary 16-A of Eight Mile Creek begins at Belgium Rd south of Holly Hill Rd and enters the main channel north of Pine Forest Rd	Increase the capacity of the structures at Belgium Road and Lillie Lane to minimize roadway flooding.												50,273	
1			Bridlewood Rd (at Mobile Hwy)	Construct two stormwater ponds, remove the culvert under Bridlewood and construct a new culvert under Nine Mile Road to prevent yard and road flooding.												929,651	
1			Magaha Area/Nine Mile Road	Improve channel and increase capacity of the upstream structure along Nine Mile Road to prevent roadway overtopping and yard												1,240,677	
1			Godwin Lane - Bayou Marcus/Millview Study Branch F	Construct new stormwater system for the area around Godwin Lane including two stormwater ponds. Drainage Problem at 3035 Godwin Lane												5,320,591	Separate in-house small scale project at 3035 Godwin Lane
1			Pensacola Heights- Branch F	Modify the existing collection system serving Pensacola Heights and construct a new detention pond. Area of Dallas, Nashville, Chicago, Montgomery, Louisville, and Denver												4,352,877	This is downgradient of the Chicago Avenue Pond
1			South Bronson Airfield Ditch Block	Construct ditch blocks in the ditch south of Bronson Airfield. (Treatment only)												142,730	
1			Bayou Grande Basin Study BB9- Carrier Dr Channel Improvements	Clear and regrade channel downstream of the culvert on Carrier Dr. to alleviate road flooding.												8,427	
1			Frank Reeder Rd culvert and swales	Construct drainage swale adjacent to roadway and culvert under Frank Reeder Road.												100,168	
1			Shelby Lane	Construct a ditch along the road and a culvert under Shelby Lane.												95,670	
1			Bronson Airfield design 2 (Eastern Side)	Construct a pond on the eastern side of the Bronson Airfield property.												9,767,981	
1			Isaacs Rd	Construct a ditch along Isaacs Road and a new culvert under Beulah Road.												114,800	

Projects for Consideration

District	C/D	Agency	Project	Description	2018	2019	2020	2021	2022	2023	2024	2025	2026	2027	2028	Total	Notes
1		Public Works/Drainage	Royal Pines - Bayou Marcus/Millview Study Branch B	Construct new stormwater system for the Royal Pines subdivision to reduce flooding in the area.												2,908,721	
1		Public Works/Drainage	Main channel crossing at Mobile Hwy	Raise the elevation of the Mobile Highway Bridge 2.5 feet to prevent over-topping.												2,539,818	This is a State Road Bridge
1		Public Works/Drainage	Ridgewood Park - Bayou Marcus/Millview Study Branch B	Construct new stormwater system for the Ridgewood Park subdivision to reduce flooding in the area.												2,524,334	
1		Public Works/Drainage	Deerwood Drive - Bayou Marcus/Millview Study Branch F	Increase the capacity of the Deerwood Drive stormwater system and outfall pipe.												1,971,838	
1		Public Works/Drainage	Serenity Circle (pond)	Construction of stormwater pond adjacent to Serenity Circle.												113,945	
1		Public Works/Drainage	Frank Reeder Rd ditch	Construct a ditch along Frank Reeder Road.												68,655	
1		Public Works/Drainage	Hurst Hammock	Construct an additional culvert under Hurst Hammock and install flap valves on the downstream side of the culverts to prevent the propagation of seawater from tidal action.												6,190,233	
1		Public Works/Drainage	Sal Tillo - Bayou Marcus/Millview Study Branch C	Improve the stormwater collection system serving the area around Sal Tillo Street.												188,060	
1		Public Works/Drainage	Imperial Drive - Bayou Marcus/Millview Study Branch B	Construct new stormwater system for the area around Imperial Drive to reduce flooding in the area.												526,033	
1		Public Works/Drainage	Saint James Place-Warrington Basin Study Branch C	Construct a new stormwater system for the St James Place/Dowdy Drive area.												902,785	
1		Public Works/Drainage	Aileron Ave - Bridge Creek/Heron Bayou Basin Branch B	Install a new storm sewer system along Aileron Avenue and increase the capacity of the existing culvert under Dog Track Road to reduce roadway flooding.												189,379	
1		Public Works/Drainage	Tatnall Street - Bridge Creek/Heron Bayou Basin Branch D	Extend the existing ditch northward into the bayou to reduce flooding.												163,750	
1		Public Works/Drainage	Pearson Rd- Bayou Marcus/Millview Basin Branch C	Construct new stormwater system for the area around Pearson Road to reduce flooding in the area.												1,364,488	
1		Public Works/Drainage	Allanthus Drive and Bauer Drive (culverts)	Upgrade culvert near intersection of Allanthus Drive and Bauer Drive.												301,051	
1		Public Works/Drainage	Bronson Airfield design 1 (northeast corner)	Construct a pond in the northeast corner of the Bronson Airfield property.												1,017,098	
1		Public Works/Drainage	Bellview and East Fence/Saufley Road	Provide conveyance system to Saufley Field C&D Pond from Bellview												1,500,000	Drainage Concepts provided as part of Saufley Field Project
1		Public Works/Drainage	61st Ave - Bayou Marcus/Millview Basin Branch D	Increase the capacity of the 61st Avenue stormwater system to reduce flooding in the area.												374,139	
2		Public Works/Drainage	Treasure Hills Drainage	Install drainage upgrades, stormwater pond w/pond site purchase, and drainage rehabilitation in area of Avon, Medina, and Gulf Beach Hwy												760,000	June 2012 Flood Study
2		Public Works/Drainage	Elsa Area Drainage	Drainage project to address flooding in the area of Elsa Avenue South of Lillian from 48th Avenue over to Feldor Avenue including 49th, 50th, 52nd, State Street, Kinear Avenue, and												2,600,000	30% concept plans completed in 2009 and design contract was cancelled
2		Public Works/Drainage	Gulf Beach Manor	Install drainage upgrades from Gulf Beach Hwy through Grainger Ave, Gerald Rd, Weller Ave, and Aileen Dr to address yard, street, and home flooding during severe storm events												200,000	June 2012 Flood Study

Projects for Consideration

District	C/D	Agency	Project	Description	2018	2019	2020	2021	2022	2023	2024	2025	2026	2027	2028	Total	Notes
2		Public Works/Drainage	Jamison Street Branch F - Warrington Basin Study (connect to Lexington Terrace Ponds)	Construct new stormwater system along Jamison Street and Rue Max Street, with concept revision to direct discharge Lexington Terrace pond to improve WQ for Bayou Chico, and reduce discharges to the Barrancas Avenue												2,000,000	Bayou Chico Water Quality Project by utilizing Lexington Terrace pond.
2		Public Works/Drainage	Beach Haven Area Drainage and Sewer Northwest	Roadway/drainage and sewer improvements (NW of Fairfield to Gulf Beach Highway)												6,000,000	Need total of \$6M for project; will require ECUA sewer funds or grant funds
2		Public Works/Drainage	Emory Drive- Warrington Basin Study Branch K	Construct a new stormwater system along Emory Drive, Stanford Road, Stetson Road, and Vanderbilt Road with a new stormwater pond at the eastern end of Tulip Drive.												637,509	
2		Public Works/Drainage	Bayou Grande Basin Study P1- Bainbridge Culvert (also Part of Beach Haven South)	Replace existing culvert on Bainbridge with a larger pipe to prevent road overtopping.												44,945	
2		Public Works/Drainage	Manchester Street and Druid Drive Drainage	Drainage improvements to address yard, street, and school (Warrington Elementary)												300,000	Not funded by LOST 4 priority
2		Public Works/Drainage	Bayou Grande Basin Study P7- Bay Meadows Treatment Pond	Provide treatment pond for existing residential development north of Bay Meadows Dr. This will not affect downstream properties. Consider Soldier Creek stream restoration as part of this project.												212,361	
2		Public Works/Drainage	Bayou Grande Basin Study S2- Athens Ave Culvert	Enlarge the existing culvert on Athens in order to prevent road flooding. This improvement will not negatively impact downstream properties or other improvements.												18,000	
2		Public Works/Drainage	Bayou Grande Basin Study S1- Americus Ave Culvert	Enlarge the existing culvert on Americus in order to prevent road flooding. This improvement may impact other												12,000	
2		Public Works/Drainage	Reef Road (Coral Creek Subdivision)	Installation of 3 curb inlets and ~400 LF piping to address ponding water at the Reef -Coral Street intersection and to address home flooding in severe storm events.												100,000	
2		Public Works/Drainage	Bayou Grande Basin Study E1 - Gulf Beach Hwy Outfall Improvement	Increase the culvert size along Gulf Beach Hwy culvert between Brigadier and Richmond. The downstream channel to Winthrop St will be regraded and shaped to provide positive flow to the Winthrop culvert. This improvement will not affect downstream properties.												73,035	
2		Public Works/Drainage	Edgewater Drive - Warrington Basin Study Branch F	Extend and increase the capacity of the stormwater system on Edgewater and Chaseville Streets. Construct an outfall ditch and discharge pipe into Bayou Chico.												1,572,096	Project is located in Warrington CRA District
2		Public Works/Drainage	Bayou Grande Basin Study CC1- Sidney Culvert	Enlarge existing culvert to prevent road flooding along Sidney Rd.												10,000	
2		Public Works/Drainage	Bayou Grande Basin Study R1- Weller Dr. Culvert	Replace and increase the existing culvert along Weller Dr. to prevent road overtopping. This improvement will not negatively impact downstream properties.												55,000	
2		Public Works/Drainage	Bayou Grande Basin Study P3- Fairfield Storm Sewer at Gulf Beach	Replace existing storm collection with a larger system to prevent road overtopping.												106,743	This is a State Road Culvert
2		Public Works/Drainage	Bayou Grande Basin Study Y2- Kinard Drainage System	Increase and extend existing roadside ditch system along Kinard Ave. and Robertson Rd. to control road and yard flooding.												179,778	
2		Public Works/Drainage	Bayou Grande Basin Study P2- Gulf Beach Storm Sewer at Fairfield	Replace existing storm collection with a larger system to prevent road overtopping.												78,653	
2		Public Works/Drainage	Eaton Rd - Warrington Basin Study Branch K	Construct a new stormwater system along Eaton Road from Feldor to Adkinson Drive with a discharge to an existing county pond per Warrington Basin Study Branch K.												1,219,351	

Projects for Consideration

District	C/D	Agency	Project	Description	2018	2019	2020	2021	2022	2023	2024	2025	2026	2027	2028	Total	Notes
2		Public Works/Drainage	Coral Village Storm Drainage Replacement	Reduce flooding by replacing failing storm pipe within drainage easement. Road Department has repaired pipe in immediate area. However, pipe condition indicate future potential												300,000	
2		Public Works/Drainage	Coral Creek West -Bayou Grande Basin Study BB4- Windward Ct Outfall Improvements	Complete ditch system to the West of Grande Bahama to address yard flooding. Clean and grade ditch outfall in Coral Creek.												13,483	
2		Public Works/Drainage	Roosevelt - Warrington Basin Study Branch K	Construct a new stormwater system along 61st, 59th, 60th, 63rd, and 65th streets with a new stormwater pond west of 61st street.												4,512,150	
2		Public Works/Drainage	Beach Haven NW: Bayou Grande Basin Study P6- Athens St. Ditch Improvements	Improve and regrade existing ditch along Athens and Gulf Beach Hwy to decrease road flooding.												8,427	
2		Public Works/Drainage	Bayou Grande Basin Study Y1- Robertson Channel Improvements	Increase and extend existing roadside ditch system along Robertson Rd to control road and yard flooding.												106,743	
2		Public Works/Drainage	Bayou Grande Basin Study L1- Cousineau Rd. Outfall	Replace the outfall from Cousineau Rd. to Bayou Grade by an outfall ditch in order to prevent street flooding.												25,281	
2		Public Works/Drainage	Bayou Grande Basin Study CC2- Sidney Culvert	Enlarge existing culvert to prevent road flooding along Sidney Rd.												16,854	
2		Public Works/Drainage	Bayou Grande B1- New Storm Drainage System	Construct a new street collection system consisting of roadside swales and culverts along 1st and 2nd streets to reduce roadway flooding. Improvement is an independent project and will not affect downstream												308,994	
2		Public Works/Drainage	Bayou Grande Basin Study P5- Grundy Culvert	Enlarge the existing culvert on Grundy in order to prevent road flooding. This improvement may impact other improvements.												25,843	This would be covered by Beach Haven NW
2		Public Works/Drainage	Indigo @ Landfall Subdivision & Gulf Beach Hwy	Drainage System Improvements to provide improved outfall system from Landfall subdivision to accommodate drainage from Gulf Beach Hwy flowing through private subdivision pond and drainage system.												300,000	
2		Public Works/Drainage	Bayou Grande Basin Study E2- Brigadier St. Culvert	Increase the culvert size on Brigadier St. to prevent road flooding. This Improvement may have a negative impact on downstream roadway flooding.												33,708	
2		Public Works/Drainage	Bayou Grande Basin Study P4- Bay Meadows Dr. Culvert	Replace the existing culvert on Bay Meadows Dr. with larger pipes to prevent road flooding.												56,181	
2		Public Works/Drainage	Bayou Grande Basin Study BB8- Vonna Jo Discharge Structure	Provide stormwater pond on Vonna Jo Circle with a discharge structure to control the water level and time of detention.												14,045	
2		Public Works/Drainage	49th Av - Warrington Basin Study Branch K	Construct a new stormwater system along 49 the Ave with a discharge to the existing county pond on Lillian Highway.												1,648,952	
2		Public Works/Drainage	Davenport Drainage	Drainage System Improvements contributing to Davenport Bayou												200,000	
3		Public Works/Drainage	Beverly Parkway Basin Branch C- Twelve Oaks Area	Construct a new collection system for the Twelve Oaks Area with a discharge to the FDOT system. Connection to the FDOT system will limit design to the 3 year event.												2,522,300	
3		Public Works/Drainage	Beverly Parkway Basin Zone D- Brentwood	Expand the stormwater systems on Cary Memorial Drive and Armenia Drive to Carolyn Way, Jacquelyn Way, Virginia Way, Palm Court, Concordia Street, and Chimes Way and tie into the existing system on Hardy Place. Connection to the FDOT system will limit design to the 3 year event.												3,596,439	

Projects for Consideration

District	C/D	Agency	Project	Description	2018	2019	2020	2021	2022	2023	2024	2025	2026	2027	2028	Total	Notes	
3		Public Works/Drainage	Catholic High Basin Zone A South - South of Avery Street	Construct new collection system to prevent street flooding. This improvement will not have negative impacts on downstream												1,440,260		
3		Public Works/Drainage	Beverly Parkway Basin Branch E- west side of Hwy 29 on Mason Lane	Construct a new collection system along Hwy 29 and Mason Lane along with a new pond for the system to connect to.												1,077,800		
3		Public Works/Drainage	Beverly Parkway Basin Branch I- Moss Lane tie in at Van Pelt Lane	Construct new stormwater system along Moss Lane.												237,810		
3		Public Works/Drainage	Johnson Ave Drainage (East of Briese Ln)	Remove/Replace faulty storm pipe from Pine Ridge Lane to Johnson Ave, Address pipe flow Crystal Wells pond, Address two 24" pipe feeding one 24" pipe down to outfall in Gulf Power Easement.												400,000	Not funded by LOST 4 priority; found in April 2014 storm event; FHWA will only cover \$60K	
3		Public Works/Drainage	Olive Manor & Lincoln Park Drainage	Drainage System Improvements with a creek restoration/preservation												1,200,000	Project was originally abandoned, due to failure to obtain approval for wetland discharge through property owner at Broad/Untreiner	
3		Public Works/Drainage	Beverly Parkway Basin Branch G- Andrew Ave and Coons Ave	Extend the stormwater collection system along Andrew Avenue and Coons Avenue.												1,319,873		
3		Public Works/Drainage	Lakewood/Millwood Terrace- Warrington Basin Branch F	Construct new stormwater collection system in the Lakewood Road area with a stormwater pond at Lakewood Road and Addison Avenue with an outfall under Lakewood Drive to Bayou												4,510,975		
3		Public Works/Drainage	West Highlands	Warrington Master Plan Branch I: Proposed new system located on Kirk Street and extend from West Avery Street to West Gonzalez Street and the surrounding area. This new system requires the acquisition and construction of a new retention/detention														Not funded by LOST 4 priority
3		Public Works/Drainage	Briese Lane between Jeffrey and Olive Road	Extend existing Johnson Ave drainage system to relieve roadway and yard flooding.												2,700,000		
3		Public Works/Drainage	Catholic High Basin Zone A North - North end of the basin around Mission Street	Expand pond storage by expanding existing pond and constructing a new pond as well as expanding and increasing existing collection to prevent home and street flooding. This improvement will not have negative impacts on downstream properties.												3,330,650		
3		Public Works/Drainage	Thompson Bayou Main Channel	Construct new stormwater pond at Airway Drive near the end of the Thompson Bayou main channel and increase the capacity of the existing culvert at Airway Drive.												2,009,815		
3		Public Works/Drainage	Tributary 21-A of Eight Mile Creek (south of Site 6, through the pit at Bush Street and enters the main channel south of Detroit Blvd)	Increase the capacity of the pond south of Bush Street. Increase the capacity of the culvert at Bush Street to prevent roadway flooding. Expand the channel in this area to increase capacity and prevent out-of-bank flooding. Relocate and increase the capacity of the structure at Nine Mile Road to line up with the improved channel.												1,628,090	This is partially being accommodated by FDOT with the Nine Mile Road Project	
3		Public Works/Drainage	Hernandez Street pond site 3	Construct a new pond on Hernandez St. to reduce flood staging in surrounding and downstream. This improvement will not negatively impact downstream												1,195,738		
3		Public Works/Drainage	New 36 Inch Pipe Outlet Along Hernandez Street	Construct a new collection system and outfall connection to the existing system to decrease flood stages in the surrounding areas. This improvement could have impacts on all downstream properties.												2,232,400		

Projects for Consideration

District	C/D	Agency	Project	Description	2018	2019	2020	2021	2022	2023	2024	2025	2026	2027	2028	Total	Notes
3		Public Works/Drainage	Beverly Parkway Basin Branch B-North Portion- Lookout Drive	Construct a stormwater system along Lookout Drive West Michigan Avenue, and Rock Island Place with a discharge to the FDOT pit.												1,128,009	
3		Public Works/Drainage	Main channel crossing at a private driveway located between Ashland Rd and Interstate 10	Raise the road height by constructing a bridge at the private driveway crossing of the main channel to prevent road overtopping and reduce flooding.												92,885	
3		Public Works/Drainage	Catholic High Zone C Drainage	Re-evaluate previous basin study solution (a new discharge trunk line with storm sewer extensions, treatment swales, and underground vaults) to determine whether ponds or direct piping produces the greatest												9,000,000	Not funded by LOST 4 priority; Moreno and R Street is a problem area
3		Public Works/Drainage	Catholic High Basin Zone B - Intersection of "S" Street and Avery Street and consist of a large storm sewer system running up "S" Street to Leonard Street	Increase and expand existing storm collection system and provide stormwater treatment. Provide tie-ins to outfall proposed in "Begins at the intersection of Avery Street and run south to Gonzalez Street, west to "U" Street and south on "U" Street to its discharge point to Maggie's Ditch." This improvement can only be constructed after the completion of the proposed outfall trunk line.												3,850,727	Not funded by LOST 4 priority; Moreno and R Street is a problem area
3		Public Works/Drainage	Improve Open Ditch Outlet Terminating at Fairfield Drive	Enlarge outlet orifice for open ditch flowing to Fairfield Drive. This will not negatively impact downstream properties/improvements.												21,000	
4		Public Works/Drainage	Rawson Lane Drainage and Resurfacing	Infrastructure drainage improvements and resurfacing												400,000	Drainage needed as part of Resurfacing, if roadway is not vacated.
4		Public Works/Drainage	Breezy Lane (between Jeffrey and Olive Road)	Relieve roadway and yard flooding, by expending a system to connect to the existing drainage system on Johnson Ave													
4		Public Works/Drainage	Ellyson Industrial Park Drainage	Miscellaneous Infrastructure drainage improvements to address roadway flooding and pavement failures at Grow Road, Copter Road, and East pond expansion, and												1,000,000	Drainage needed as part of Resurfacing
4		Public Works/Drainage	Via DeLuna Drainage at Pensacola Beach RV Resort	System should be cleaned of sediment and checked regularly. Increased system capacity should be considered.												287,470	
4		Public Works/Drainage	Thompson Bayou - Scenic Hills Basin Study Tributary A	Construct a new stormwater pond between University Parkway and Shoal Creek Drive.												1,736,479	
4		Public Works/Drainage	Pensacola Beach Blvd Stormwater Outfall Upgrades	Installing stormwater treatment on the outfall in the vicinity of the marina within the existing stormwater easement												401,121	
4		Public Works/Drainage	Calle Juela Drainage at Via DeLuna	Regrade to a grate inlet with outfall through an exfiltration pipe												93,595	
4		Public Works/Drainage	Calle Traviesa Drainage at Via DeLuna	Regrade to a grate inlet with outfall through an exfiltration pipe												93,595	
4		Public Works/Drainage	Siguenza Drive Drainage	Construct a small retention area at the bend adding a new inlet at the location of the												93,595	
4		Public Works/Drainage	Via DeLuna Side road Connection Drainage Improvements	Drainage Improvements												334,270	
4		Public Works/Drainage	Visitor Information Center Access Road Drainage	Regrading and repaved roadway to add slope and positive outfall to drainage inlets												93,595	
5		Public Works/Drainage	Well Line Rd Home Flooding	Increase the capacity of the culvert under Well Line Road to reduce roadway and home flooding. Connect the Well Line Road culvert to the culvert running under Forrest Street to minimize water flowing across the property (this will require permission or easements from two property owners).												67,472	
5		Public Works/Drainage	Hwy 29 (North of Bet Raines Rd)	Increase the capacity of culverts under Highway 29 and modify the surrounding ditch area to reduce roadway flooding.												323,506	

Projects for Consideration

District	C/D	Agency	Project	Description	2018	2019	2020	2021	2022	2023	2024	2025	2026	2027	2028	Total	Notes
5		Public Works/Drainage	International Paper Area	Increase capacity of drainage system in order to reduce roadway overtopping and upstream flood stages.												367,980	
5		Public Works/Drainage	Ten Mile Road at Stefani Dr.	Increase the collection system size along Stefani Drive and Ten Mile Road and increase the capacity of the culverts under Midway Drive to reduce extensive flooding in the area. Improvement may have a negative effect on downstream properties.												393,265	
5		Public Works/Drainage	Ten Mile Creek from Pine Forest to Stefani Dr.	Reconstruct Ten Mile Creek from Pine Forest to Stefani Drive to provide additional storage capacity to reduce extensive flooding in the area. Improvement may have a negative effect on downstream properties												8,988,914	
5		Public Works/Drainage	Ten Mile Creek from Stefani Drive to Roberts Rd.	Reconstruct Ten Mile Creek from Stefani Drive to Roberts Road to provide additional storage capacity to reduce extensive flooding in the area. Improvement may have a negative effect on downstream properties.												10,674,335	
5		Public Works/Drainage	Tate Road North of Petty St	Increase capacity of roadway culvert crossings to prevent overtopping of Tate Road												13,269	
5		Public Works/Drainage	Filly Rd	Increase capacity of culvert crossing to prevent overtopping of Filly Rd												5,000	
5		Public Works/Drainage	Creekwood Drive	Increase capacity of culvert at Creekwood Drive to prevent roadway overtopping												7,000	? Where is this
5		Public Works/Drainage	Chestnut Rd to Hwy 29	Remove accumulated sediment from the upstream side of the Chestnut Road bridge in order to lower downstream velocities. Replace the culverts under Molino Road and Chestnut Road with bridges to prevent roadway overtopping and increase flow capacity.												1,027,014	
5		Public Works/Drainage	NA-Ashland Park Joint ECUA funded sewer and drainage	Improve Box Culverts at Rodney, Joel and Childers Streets.												100,000	ECUA is working on sewer plan; possible joint project.
5		Public Works/Drainage	Frank Reeder Rd & Rebel Rd	Reconstruct the swale in the area near Rebel Road and construct a culvert under Frank Reeder Road.												49,523	
5		Public Works/Drainage	Hwy 97 (East of Hwy 29)	Increase the capacity of the culverts under Highway 97 to decrease likelihood of roadway flooding.												201,759	
5		Public Works/Drainage	11 Mile Creek Basin Study Zone 5	increase capacity of pipe under Green Hills Rd and construct a pond near urban drive to alleviate area flooding.												3,619,643	Project was repaired with FEMA 2014 event and upsized; regional ponds upgradient is required.
5		Public Works/Drainage	Shadow Ridge Drive - Meadowview Lane	Drainage Improvements proposed w/in unopened County RW in coordination with adjacent property to address property damage and erosion for the accumulation of development; primarily 801 SHADOW RIDGE DR and adjacent vacant lot 805 SHADOW RIDGE DR.												30,000	John Uptogrove 478-5728 has experienced most of the damage to his property. Don PaeDae is planning on developing on the adjacent lot and my resolve this drainage issue.
5		Public Works/Drainage	Hwy 29 (North of Quintette Rd.)	Replace the existing culverts under (divided) Highway 29 north of Quintette Road with two bridge structures to increase flow capacity and prevent roadway overtopping.												2,412,936	
5		Public Works/Drainage	Hwy 29 (Jack's Branch Q13)	Replace the existing culverts under (divided) Highway 29 with two bridge structures to increase flow capacity and prevent roadway overtopping.												2,410,815	
5		Public Works/Drainage	Hwy 29 (South of Omega Drive)	Increase the capacity of the culverts under Highway 29 south of Omega Drive to reduce roadway flooding.												331,272	

Projects for Consideration

District	C/D	Agency	Project	Description	2018	2019	2020	2021	2022	2023	2024	2025	2026	2027	2028	Total	Notes
5		Public Works/Drainage	Hwy 29 (North of Hwy 97)	Increase the capacity of the culverts under Highway 29 near North Highway 95A to prevent flooding.												283,017	
5		Public Works/Drainage	Hwy 97 at Elementary School	Increase the capacity of the two culverts under Highway 97 near the Molino School and connect them with an earthen ditch. This will prevent roadway flooding.												297,927	
5		Public Works/Drainage	Frank Reeder Rd & Beulah Rd	Reconstruction of the ditch and installation of culverts where necessary to provide a defined drainage path.												64,153	
5		Public Works/Drainage	Greenbrier Pond Parcel property acquisition	This is a traffic capacity projects with funding acquisition													Design contract is on hold for ROW and pond parcel acquisition. Project
5		Public Works/Drainage	Hwy 29/Tate School Road	Increase capacity of culverts to prevent overtopping of Tate Road												187,331	
5		Public Works/Drainage	Ten Mile Creek from Roberts Rd North to Kingfield Rd	Reconstruct the creek to provide additional storage volume and increase the culvert capacity under Roberts Road, Dolphin Street, Tate Road, and Kingsfield Road to prevent flooding to structures. Improvements may have a negative effect on downstream												4,494,457	
5		Public Works/Drainage	Carrington Lakes	Repair outfall erosion at the private subdivision pond to prevent further erosion and possible wetland impacts.												276,893	
5		Public Works/Drainage	Ashton Brosnaham Park	Construct a new stormwater pond at the end of Bet mark Lane with a ditch connecting runoff from the recreational center to the												1,568,144	
5		Public Works/Drainage	Northcreek and Valley Ridge Area Drainage Joint Sanitary Sewer Project	Drainage and sanitary sewer improvements in Northcreek Subdivision and in the adjacent Deer Run and Valley Ridge subdivisions, as well as on Bison Road and Motley Court												2,500,000	Not funded by LOST 4 priority
5		Public Works/Drainage	Rittenberry Drive and Madrid Road	Increase the capacity of the culverts under Rittenberry Drive and Madrid Road and deepen the roadside ditches to prevent home flooding.												70,597	
5		Public Works/Drainage	Well Line Rd	Increase the capacity of the culverts under Well Line Road to reduce roadway flooding. Clear debris and large pieces of concrete pipe from the downstream channel to facilitate stormwater flow.												58,461	
5		Public Works/Drainage	Stacey Rd (at the bridge)	Clear and grade the existing channel area and construct an improved concrete outfall channel to provide adequate stormwater conveyance and reduce yard and building flooding.												45,290	
5		Public Works/Drainage	Stacey Rd at Quintette Rd	Increase the capacity of the culverts under Stacey Road and Quintette Road and construct a ditch that connects them to prevent roadway and home flooding.												127,811	
5		Public Works/Drainage	Quintette Rd (North of Welcome Circle)	Increase the capacity of the culverts under West Quintette Road and replace the existing grate inlet to decrease roadway flooding. These improvements may have a negative impact on downstream properties.												59,474	
5		Public Works/Drainage	Ponderosa Drainage Positive Outfall System	Expand existing pond to accommodate contributing basin; Pond still needs a positive outfall system to be compliant with Code, and prevent future property owner flooding.												2,243,000	Pond property acquisition complete for closed basin pond; future expansion will need a positive outfall.
5		Public Works/Drainage	Ryale Road Drainage	Water stands in the roadway												90,000	3/29/16 Ms Betty Montford called stating the roadway floods at least a foot deep.

Projects for Consideration

District	C/D	Agency	Project	Description	2018	2019	2020	2021	2022	2023	2024	2025	2026	2027	2028	Total	Notes
5		Public Works/Drainage	Staff Drive (Sheppard Grove)	Runoff from Tate School to private drainage easement causing yard flooding, of which property owners has built/encroached with a deck. Property owner has been referred to MSBU process.												40,000	
5		Public Works/Drainage	Ten Mile Road Drainage and Roadway Improvements	Chemstrand to Palafox: Needing property acquisition and construction funds \$2.5M for drainage and \$2.5M transportation												2,500,000	Traffic is not funding this project. Need \$4M to \$5M for drainage and transportation improvements
5		Public Works/Drainage	Beulah Road Ditch	Clean out existing culvert and construct a new ditch to convey stormwater to the culvert.												90,039	
5		Public Works/Drainage	11 Mile Creek Basin Study Zone 6 (Amanda Lane & 9 1/2 Mile Road)	increase culvert capacity under Amanda lane and 9 1/2 mile road (seems to be partial overlap with 94 priority 19)												258,586	
5		Public Works/Drainage	Intersection of Hwy 29 and Hwy 97	Construct a dry pond and conveyance pipes at the corner of Highway 97 and Crabtree Church Road to contain and control downstream stormwater runoff. Increase the capacity of culverts running under Highway 29 to reduce roadway flooding.												558,138	
5		Public Works/Drainage	11 Mile Creek Basin Study Zone 8 (Kingsfield Road near Pompano Street)	Increase culvert capacity to reduce area flooding.												99,466	
5		Public Works/Drainage	Landfill Berm (Perdido River South Basin)	Raise the berm east of the landfill to prevent an existing pond from overtopping.												623,520	
5		Public Works/Drainage	Brookshill Drive	Replace the existing culverts under Brookshills Drive with a bridge span to increase flow capacity under the road and decrease roadway, yard, and home flooding. Set a minimum finished floor elevation for any new homes built along the road in order to prevent												409,429	
5		Public Works/Drainage	Piney Lane	Construct a ditch along the road and a culvert under Piney Lane.												101,294	
5		Public Works/Drainage	Nims Lane Drainage Project	Nims Lane receives stormwater from a basin of approximately 29 acres. This basin extends just east of Holsberry Road and just north of Holsberry Lane. This area is prone to flooding due a lack of a positive outfall or stormwater conveyance system. Discharge from this conveyance system is expected to be routed to the Holsberry Pond												400,000	Not funded by LOST 4 priority. Problem with easement acquisition
5		Public Works/Drainage	Perdido Rd West of Balboa Road	Increase the capacity of the culverts under Perdido Road to decrease roadway and yard flooding. This will negatively effect downstream properties and should be performed in conjunction with other Balboa Road improvements.												43,814	
5		Public Works/Drainage	Daylilly Road	Increase the capacity of the culverts under Daylilly Road to decrease roadway overtopping. This improvement may have a negative effect on downstream homes, so the downstream ditch should be considered in construction												49,488	
5		Public Works/Drainage	Stacey Rd (at the bend)	Regrade the right-of-way and increase the capacity of the culverts under Stacey Road to prevent roadway and yard flooding.												93,335	
5		Public Works/Drainage	Schaag Rd at Stokes Pond	Place riprap along the channel from Stokes Pond to the cross drain inlet to prevent channel erosion. Replace the upstream headwall to prevent headwall failure and roadway undermining.												98,040	
5		Public Works/Drainage	Crabtree Church Rd at Abbott Lane	Replace the existing culverts under Crabtree Church Road with a bridge to reduce roadway flooding.												927,730	

Projects for Consideration

District	C/D	Agency	Project	Description	2018	2019	2020	2021	2022	2023	2024	2025	2026	2027	2028	Total	Notes
5		Public Works/Drainage	Bet Raines Rd (East of Bridge)	Increase the capacity of the culverts underneath Bet Raines Road and construct an earthen ditch to improve flows and reduce												75,991	
5		Public Works/Drainage	Bridge on Bet Raines Rd	Improve flow conditions through the bridge area by removing trees and brush from the flow path and ensuring a 6 foot clearance below the bottom of the bridge.												17,000	
5		Public Works/Drainage	Chestnut Rd South	Increase the capacity of the culverts under Chestnut Road to decrease roadway flooding and possible home flooding.												101,837	
5		Public Works/Drainage	Quintette Rd (at Welcome Rd)	Increase the capacity of the culverts under Quintette Road and improve the downstream channel in order to reduce roadway flooding.												51,489	
5		Public Works/Drainage	Schaag Rd Bridge at Jack's Branch Tributary P	Replace the existing bridge with a new bridge that has sufficient hydraulic capacity to prevent roadway overtopping.												695,188	
5		Public Works/Drainage	Chestnut Rd North	Raise the elevation of Chestnut Road increase the flow capacity of the culverts to decrease roadway flooding.												271,465	
5		Public Works/Drainage	Risen Drive and Bonanza Drive	Upgrade the culvert under Bonanza Drive and obtain drainage easement over downstream ditch to reduce roadway flooding at the intersection. Improvement may have a negative effect on downstream properties.												101,125	
5		Public Works/Drainage	River Annex Road bridge	Reconstruct the bridge over River Annex Road to a higher elevation.												623,519	
5		Public Works/Drainage	SR 297-A/Meander Road	Increase capacity of culverts to prevent overtopping of State Road 297-A												61,024	
5		Public Works/Drainage	Perdido Rd at Saverna Park	Increase the capacity of the culverts near Perdido Road to prevent roadway overtopping.												166,774	
5		Public Works/Drainage	Cedar Tree Lane (Hwy 29 Side Drain)	Lower and increase the capacity of the culverts under Cedar Tree Lane to prevent roadway flooding. Rebuild the downstream ditch in order to provide a positive grade away from the cross drain.												137,132	
5		Public Works/Drainage	Cedar Tree Lane (at Cedar Point Rd)	Increase the capacity of the culverts under Cedar Tree Lane to prevent roadway flooding. The roadway in this area should also be paved to decrease sediment buildup in the culverts.												85,872	
5		Public Works/Drainage	Welcome Rd (at the bend)	Increase the capacity of the culvert under Welcome Road to prevent roadway overtopping and add end treatments and riprap to prevent erosion.												47,062	
5		Public Works/Drainage	Crabtree Church Rd (East of Chestnut Rd)	Increase the capacity of the culverts under Crabtree Church Road to decrease roadway flooding.												51,767	
5		Public Works/Drainage	Schaag Rd (North of Hwy 196)	Raise the surface elevation of a portion of Schaag Road and increase the capacity of the culverts underneath to prevent roadway												351,943	
5		Public Works/Drainage	Beulah Rd sag near bridge	Regrade Beulah Road to prevent overtopping. Improvement may have a negative effect on downstream properties.												248,732	
5		Public Works/Drainage	Monroe Avenue	Increase the capacity of the culverts under Monroe Avenue to decrease roadway flooding. This may have negative impacts on downstream properties.												90,647	
1 & 2		Public Works/Drainage	Bayou Grande Basin Study BB10-Liberty Church Discharge Structure	Provide stormwater pond at Liberty Church with a discharge structure to control the water level and time of detention.												14,045	
2 & 3		Public Works/Drainage	West Cervantes at Westworth	Correct road flooding in area with no drainage system												600,000	

Projects for Consideration

District	C/D	Agency	Project	Description	2018	2019	2020	2021	2022	2023	2024	2025	2026	2027	2028	Total	Notes
			BASIN STUDY: Carpenters Creek South Basin Study (primarily located in City Limits)	Master Drainage Plan Study to continue South into the City Limits from the Olive Road North area Sub-basin draining through the City. Depending upon funding, the study may extend to other City areas of the basin to implement a Bacteria Pollution Control Plan (BCA); requires joint City funding since basin is													City of Pensacola funding and/or RESTORE funding will determine if project will be expanded to other areas of the basin within City limits.
3 & 4		Public Works/Drainage														400,000	
			Total													\$369,262,682	

Committee of the Whole

6.

Meeting Date: 06/15/2017

Issue: NOLF Site X Discussion

From: Joy D. Blackmon, P.E., Director

Information

Recommendation:

NOLF Site X Discussion

(Joy D. Blackmon, Cooper Saunders - 30 min)

A. Board Discussion

B. Board Direction

Attachments

No file(s) attached.

Committee of the Whole

7.

Meeting Date: 06/15/2017

Issue: Midtown Commerce Park

From: Doug Underhill, Commissioner

Information

Recommendation:

Midtown Commerce Park
(Commissioner Underhill - 5 min)

A. Board Discussion

B. Board Direction

Attachments

Letter - Midtown Commerce Park



OFFICE OF THE MAYOR

June 12, 2017

Jack Brown
Escambia County Administrator
221 Palafox Place, Ste. 400
Pensacola, FL 32502

Dear Mr. Brown,

As a follow up to our conversations about the Midtown Commerce Park and my letter to you dated April 6, 2017, I wanted to make sure you were aware of the latest related actions taken by the City.

At its June 11 meeting, the City Council approved the Mayor's recommendations to deed to the County, at no cost, the real property located at 3910 N. Palafox Street, to de-annex the portion of the Midtown Commerce Park currently under City jurisdiction, and to agree not to annex any portion of the site, after development, for a period of 15 years. All of the actions are contingent upon Escambia County's acceptance of title to the federally owned Superfund parcels.

Please continue to keep me informed regarding any Board of County Commissioners activity with regards to development of the Midtown Commerce Park. Since the City Council authorized the Mayor to take any and all means required to complete the above recommendations, I will be your primary point of contact and will have the responsibility to ensure that work to fulfill the City's commitments begins if and when the County accepts title.

I look forward to our continued cooperation on this matter. As always, if you or your staff have any questions about this update or the process for moving forward, I will be happy to answer them.

Sincerely,

A handwritten signature in blue ink, appearing to read "Eric Olson", written in a cursive style.

Eric W. Olson
City Administrator

CC: Brian Spencer, City Council President
Don Kraher, Council Executive