



AGENDA

COMMITTEE OF THE WHOLE WORKSHOP BOARD OF COUNTY COMMISSIONERS

Board Chambers
Suite 100
Ernie Lee Magaha Government Building - First Floor
221 Palafox Place

January 12, 2016
9:00 a.m.

Notice: This meeting is televised live on ECTV and recorded for rebroadcast on the same channel. Refer to your cable provider's channel lineup to find ECTV.

1. Call to Order

(PLEASE TURN YOUR CELL PHONE TO THE SILENCE OR OFF SETTING.)
2. Was the meeting properly advertised?
3. FDOT Roadway Project
(Peggy Kelly with FDOT/Tracy Boutwell with American Consulting Professionals - 15 min)
 - A. Board Discussion
 - B. Board Direction
4. Short-Term Vacation Rental Ordinances (BACKUP TO BE DISTRIBUTED UNDER SEPARATE COVER)
(Alison Rogers - 30 min)
 - A. Board Discussion
 - B. Board Direction
5. LOST (Local Option Sales Tax) Discussion (BACKUP TO BE DISTRIBUTED UNDER SEPARATE COVER)
(Jack Brown/Amy Lovoy - 60 min)
 - A. Board Discussion
 - B. Board Direction

6. Jail Update (BACKUP TO BE DISTRIBUTED UNDER SEPARATE COVER)
(Jack Brown - 60 min)
 - A. Board Discussion
 - B. Board Direction

7. Presentation on Promise Zone (NO BACKUP PROVIDED)
(Kathleen Huebach - 10 min)
 - A. Board Discussion
 - B. Board Direction

8. Adjourn

Committee of the Whole

3.

Meeting Date: 01/12/2016

Issue: FDOT Roadway Project

From: Joy D. Blackmon, P.E., Director

Information

Recommendation:

FDOT Roadway Project

(Peggy Kelly with FDOT/Tracy Boutwell with American Consulting Professionals - 15 min)

A. Board Discussion

B. Board Direction

Attachments

US 90 Kick-off Meeting Presentation

U.S. 90 Project Development & Environment (PD&E) Study

From Scenic Highway to the Santa Rosa County Line and from the Escambia County Line to Glover Lane
Escambia and Santa Rosa Counties



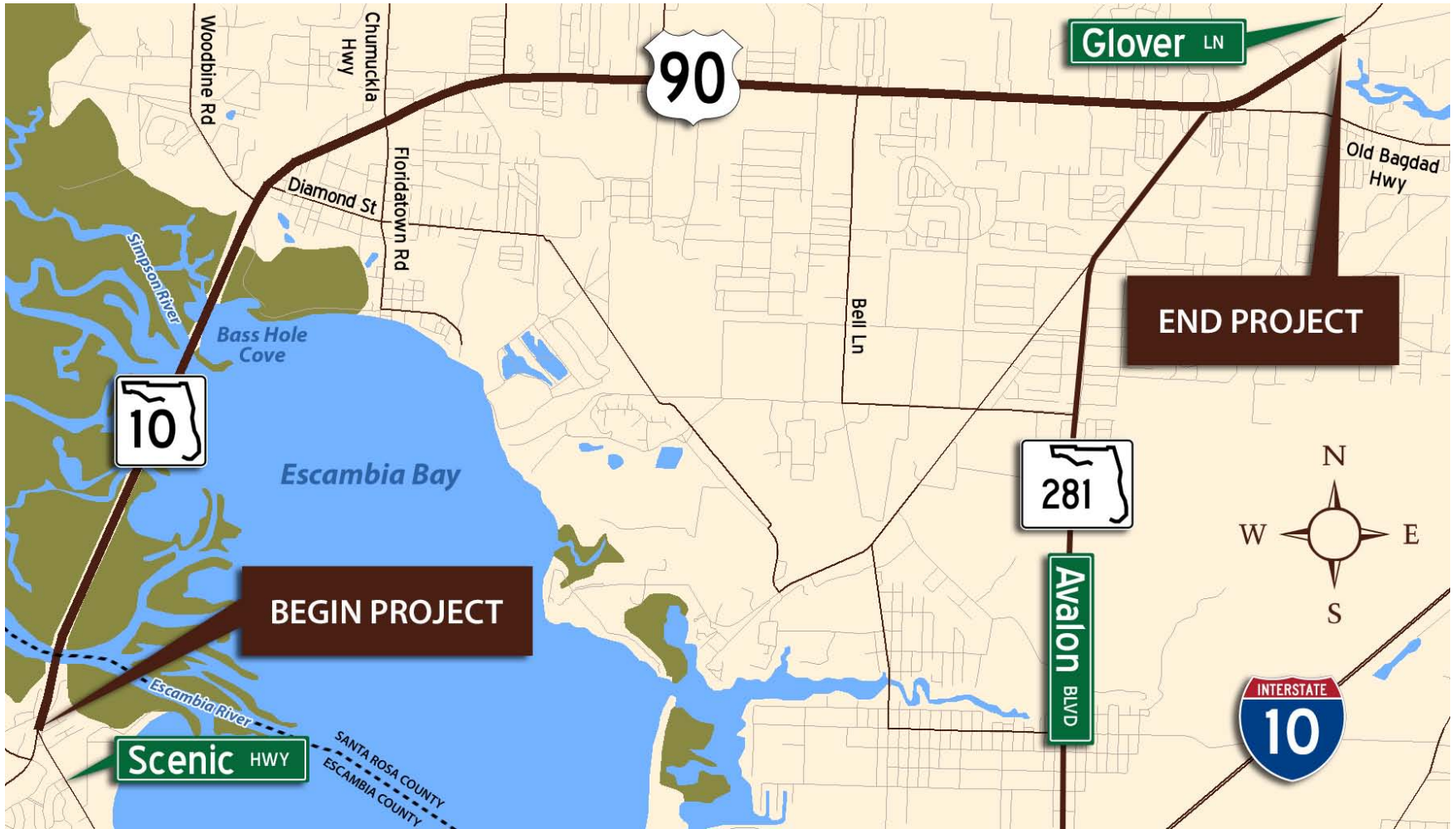
Elected Officials Kick-Off Meeting Presentation

January 2016



FPID Nos.: 220436-2-22-01 & 220436-3-22-01

Study Area and Limits





- **To analyze engineering alternatives for future six-laning**
- **To consider agency and public input**
- **To assess effects on the environment**
- **To prepare an approved State Environmental Impact Report (SEIR)**

Why is the Project Needed?

- Additional capacity is needed to strengthen and accommodate projected future roadway volumes and the large number of commuters traveling between Escambia and Santa Rosa Counties, and
- Emergency evacuation

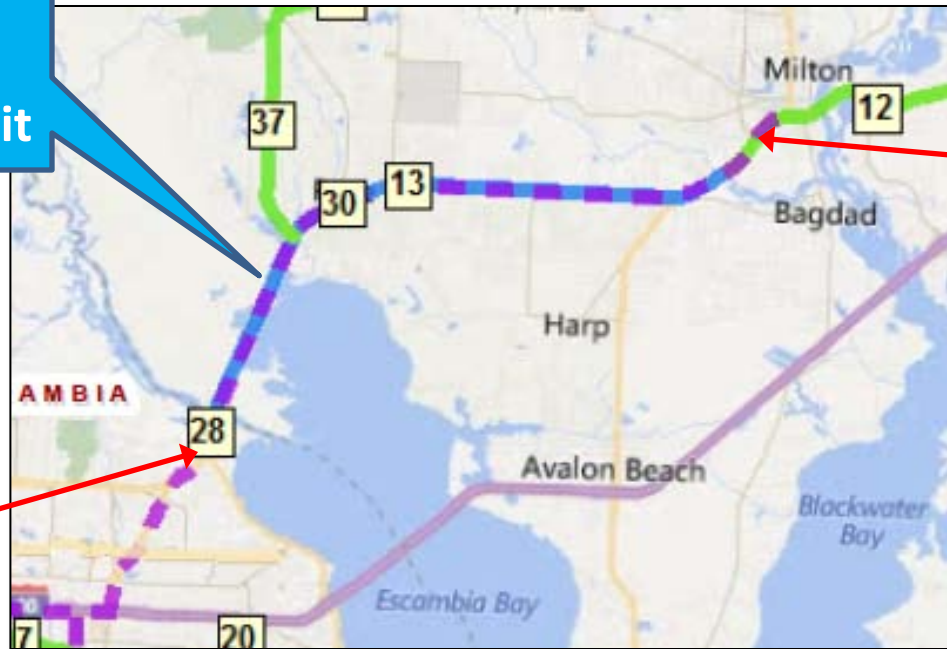


Project Status in the TPO's LRTP



Florida-Alabama TPO 2040 Long Range Transportation Plan - Adopted Cost Feasible Plan Projects

Proposed 6 Lanes with Express Transit

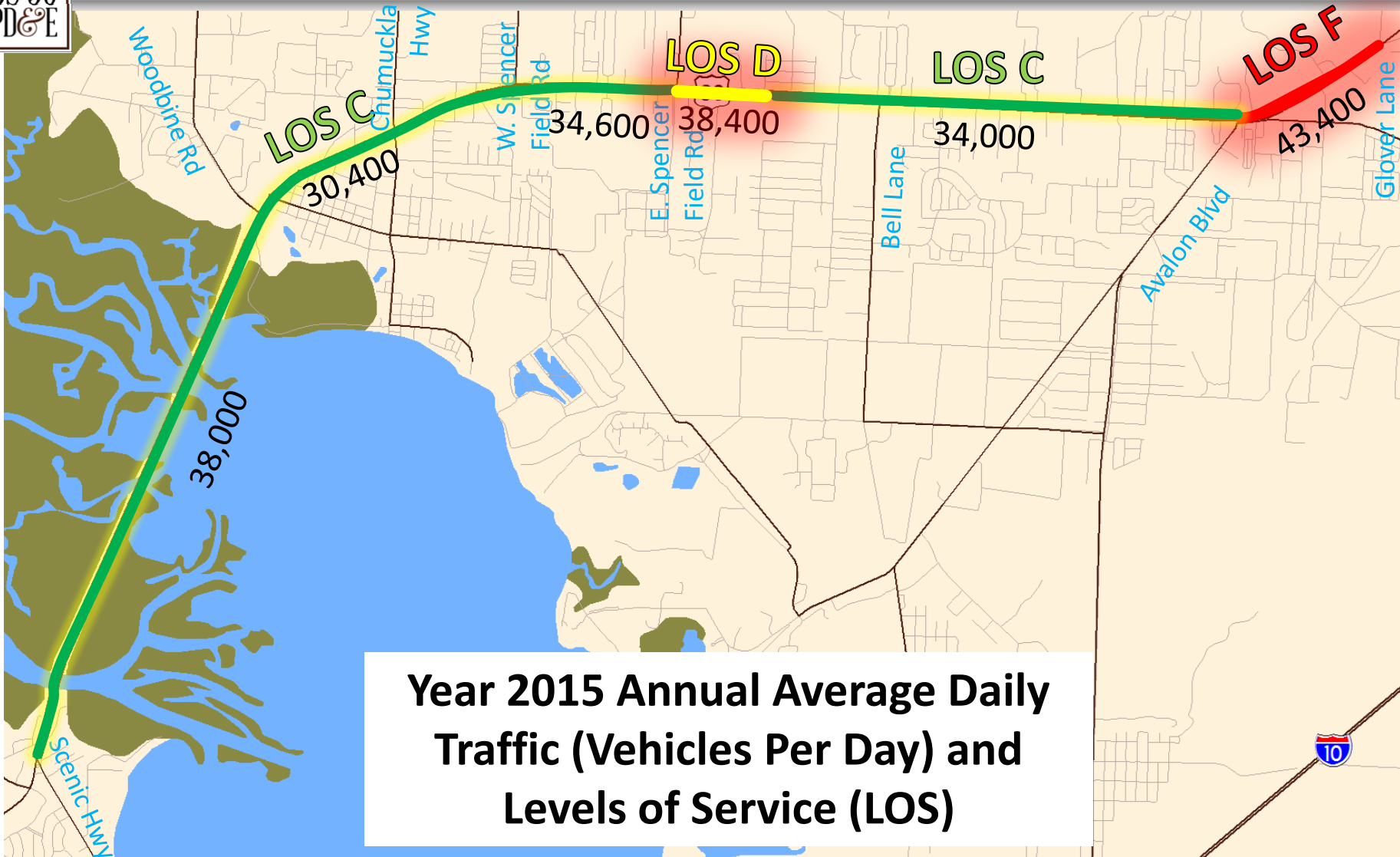


End Study

Begin Study



Existing Traffic & LOS



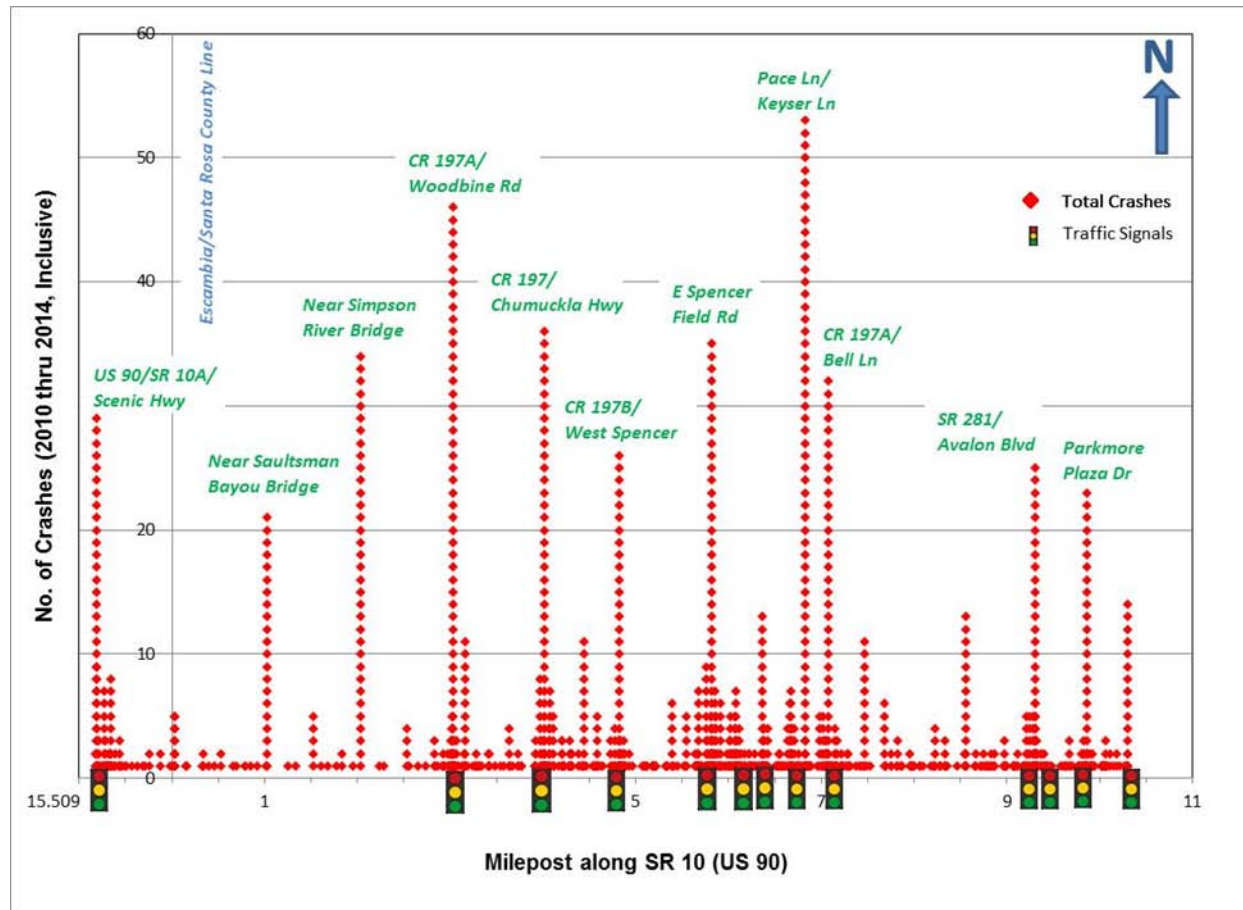
Year 2015 Annual Average Daily Traffic (Vehicles Per Day) and Levels of Service (LOS)



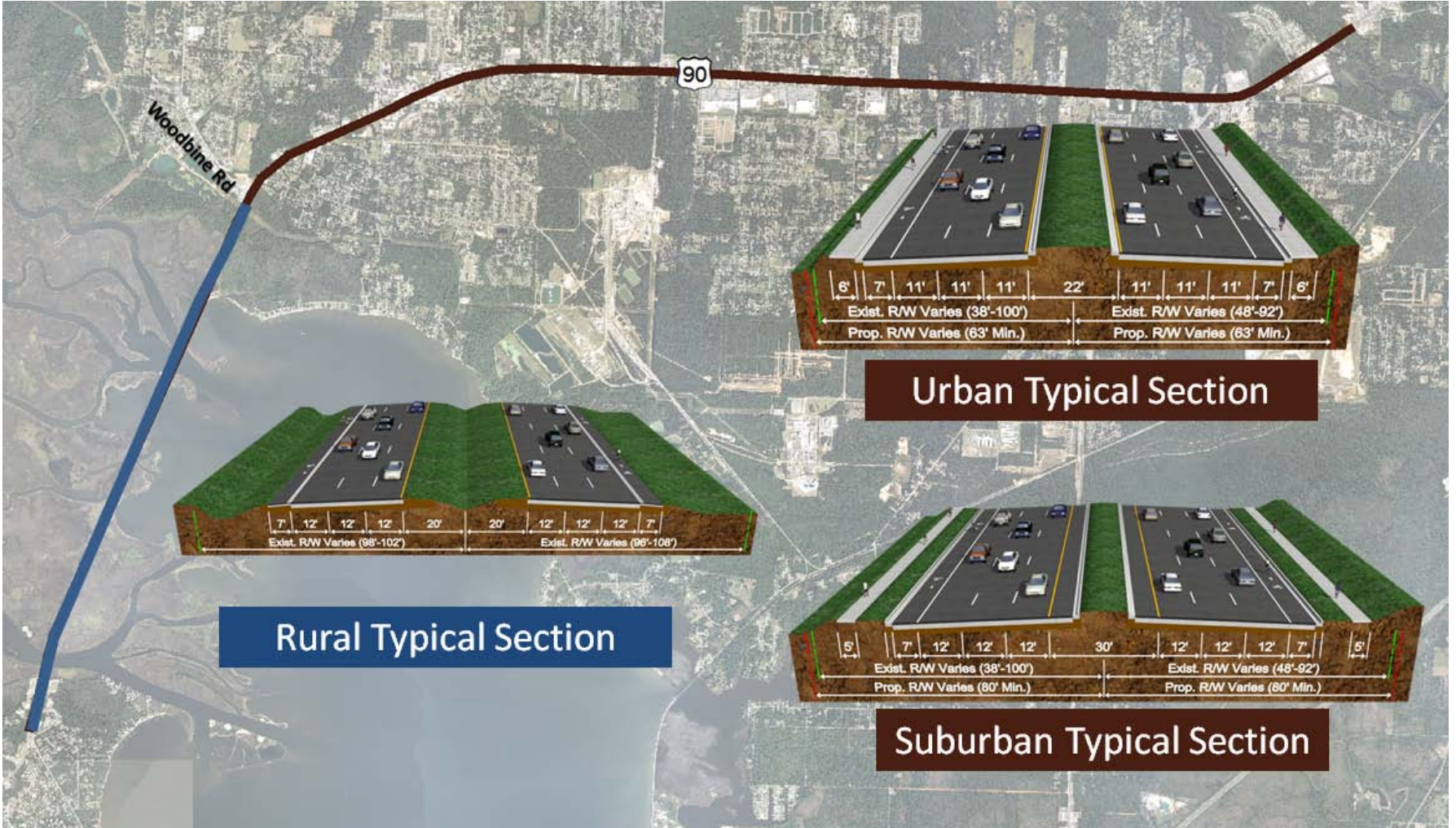


Traffic Crash History

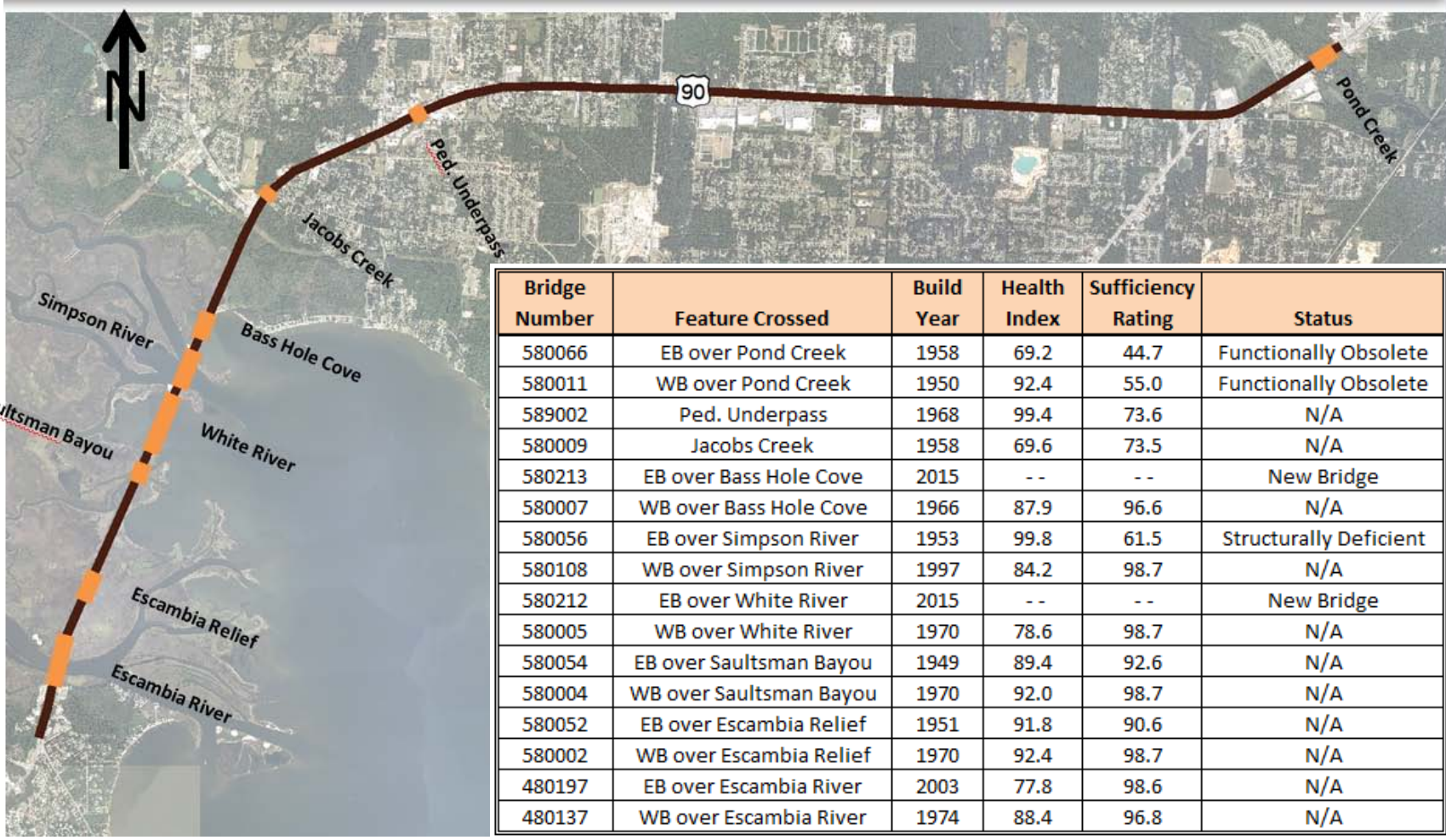
From 2010 thru 2014 (inclusive) approximately; 1442 crashes were reported:
14 fatal crashes and 673 injury crashes



Potential Typical Sections



Existing Bridges



- Major Issues Anticipated
 - Access Management
 - Scenic Highway
 - Smiths Fish Camp Road
 - Locations of median openings
 - Construction Impacts
 - Pedestrian & Bicyclist Facilities
 - Location of facilities
 - For and Against
 - ROW impacts
 - Landscaping
 - Will it be included or not





Tentative Project Schedule

Task/Phase	2015	2016				2017			
	Q4	Q1	Q2	Q3	Q4	Q1	Q2	Q3	Q4
Project Initiation	▲								
Kick-Off Meetings		▲							
Alternatives Analysis			■						
Public Information Workshop					▲				
Engr./Enviro. Documents			■						
Public Hearing							▲		
Final Project Approval									▲



Work Program Status

Phase	Current Status in 5-Year Work Program
PD&E Study	Currently Underway
Design	Not Currently Funded
Right of Way Acquisition	Not Currently Funded
Construction	Not Currently Funded

Public Kick-Off Meeting Scheduled



Thursday, January 28, 2016
at:
Santa Rosa County Auditorium
4530 Spikes Way
Milton FL 32583
5:30 p.m. – 6:30p.m.





Peggy Kelley

FDOT Project Manager

1074 Highway 90

Chipley, FL 32428

Peggy.Kelley@dot.state.fl.us

1.888.638.0250 ext. 1517

Tracy Boutwell, P.E.

Consultant Project Manager

American Consulting Engineers of
Florida, LLC

4489 Woodbine Road

Pace, Florida 32571-8726

Tboutwell@acp-fl.com

850.289.1004

As the study develops, information will be added to the project website located at:

www.nwflroads.com/futureprojects.shtm

Committee of the Whole

4.

Meeting Date: 01/12/2016

Issue: Short-Term Vacation Rental Ordinances

From: Alison Rogers, County Attorney

Information

Recommendation:

Short-Term Vacation Rental Ordinances (BACKUP TO BE DISTRIBUTED UNDER SEPARATE COVER)

(Alison Rogers - 30 min)

A. Board Discussion

B. Board Direction

Attachments

No file(s) attached.

Committee of the Whole

5.

Meeting Date: 01/12/2016

Issue: LOST (Local Option Sales Tax) Discussion

From: Jack Brown, County Administrator

Information

Recommendation:

LOST (Local Option Sales Tax) Discussion (BACKUP TO BE DISTRIBUTED UNDER SEPARATE COVER)

(Jack Brown/Amy Lovoy - 60 min)

A. Board Discussion

B. Board Direction

Attachments

No file(s) attached.

Committee of the Whole

6.

Meeting Date: 01/12/2016

Issue: Jail Update

From: Jack Brown, County Administrator

Information

Recommendation:

Jail Update (BACKUP TO BE DISTRIBUTED UNDER SEPARATE COVER)

(Jack Brown - 60 min)

A. Board Discussion

B. Board Direction

Attachments

No file(s) attached.

Committee of the Whole

7.

Meeting Date: 01/12/2016

Issue: Promise Zone

From: Lumon May, District 3 Commissioner

Information

Recommendation:

Presentation on Promise Zone (NO BACKUP PROVIDED)

(Kathleen Huebach - 10 min)

A. Board Discussion

B. Board Direction

Attachments

No file(s) attached.
